

APP CRS	Rwy Idg	8000
228°	TDZE	1518
	Apt Elev	1519

RNAV (GPS) Y RWY 23

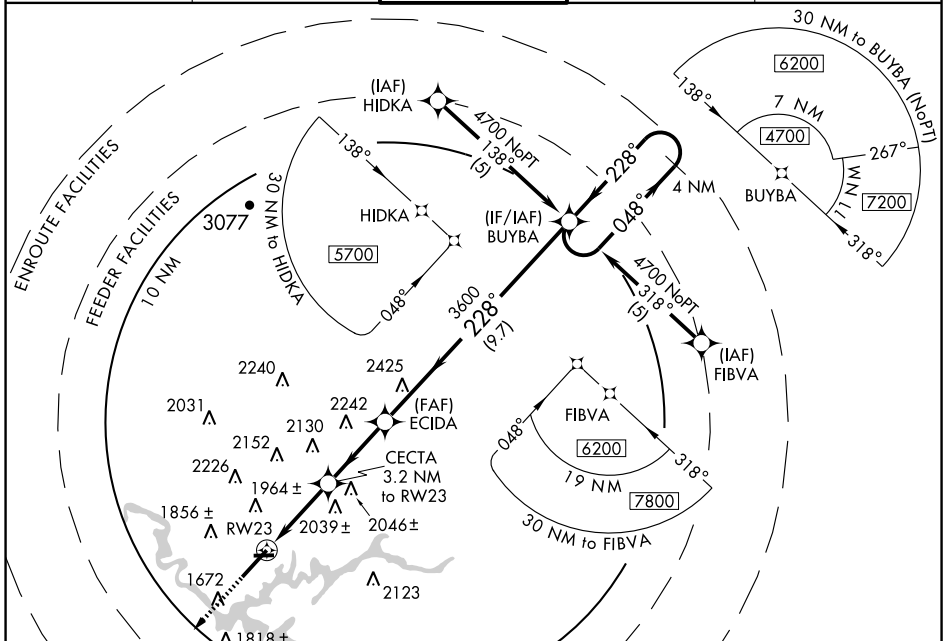
BRISTOL / TRI-CITIES RGNL TN/VA (TRI)

⚠ Circling NA NW of Rwys 9 and 23. Circling to Rwy 09 NA at night. GPS or RNP-0.3 Required. DME/DME RNP-0.3 NA.
⚠ NA When VGSI inoperative, circling to Rwy 27 NA at night.



MISSED APPROACH: Climb to 3600 direct HOSEM WP and hold.

ATIS 118.25	TRI-CITY APP CON* 134.425 317.5	TRI-CITY TOWER* 119.5 (CTAF) 257.8	GND CON 121.7 348.6	UNICOM 122.95
-----------------------	---	--	-------------------------------	-------------------------



SE-1, 22 OCT 2009 to 19 NOV 2009

SE-1, 22 OCT 2009 to 19 NOV 2009

