

# RNAV (GPS) RWY 9

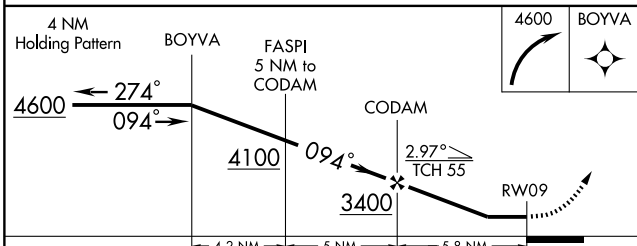
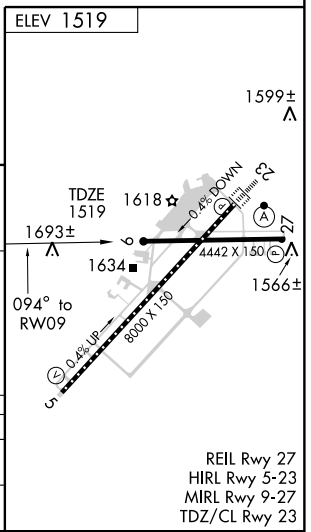
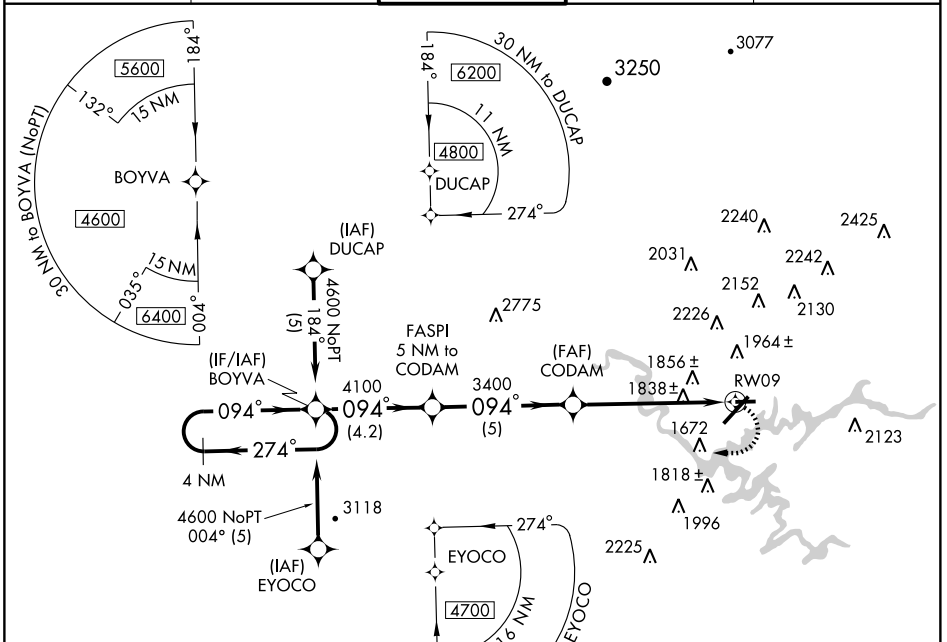
BRISTOL / TRI-CITIES RGNL TN/VA (TRI)

APP CRS	Rwy Idg	<b>4442</b>
<b>094°</b>	TDZE	<b>1519</b>
	Apt Elev	<b>1519</b>

When VGSI inoperative, circling to Rwy 27 NA at night.  
 Straight-in Minimums NA at night.  
 Circling NA NW of Rws 9 and 23. Circling to Rwy 09 NA at night.  
 GPS or RNP-0.3 Required. DME/DME RNP-0.3 NA.

MISSED APPROACH: Climbing right turn to 4600 direct BOYVA WP and hold.

ATIS <b>118.25</b>	TRI-CITY APP CON* <b>134.425 317.5</b>	TRI-CITY TOWER* <b>119.5 (CTAF) 257.8</b>	GND CON <b>121.7 348.6</b>	UNICOM <b>122.95</b>
-----------------------	---	--	-------------------------------	-------------------------



CATEGORY	A	B	C	D
LNVA MDA	2100-1	581 (600-1)	2100-1½ 581 (600-1½)	2100-1¾ 581 (600-1¾)
CIRCLING	2120-1	601 (700-1)	2120-1¾ 601 (700-1¾)	2120-2 601 (700-2)

REIL Rwy 27  
 HIRL Rwy 5-23  
 MRL Rwy 9-27  
 TDZ/CL Rwy 23

SE-1, 22 OCT 2009 to 19 NOV 2009

SE-1, 22 OCT 2009 to 19 NOV 2009