

LOC I-BON 111.5	APP CRS 048°	Rwy Idg 8000
		TDZE 1498
		Apt Elev 1519

ILS or LOC RWY 5

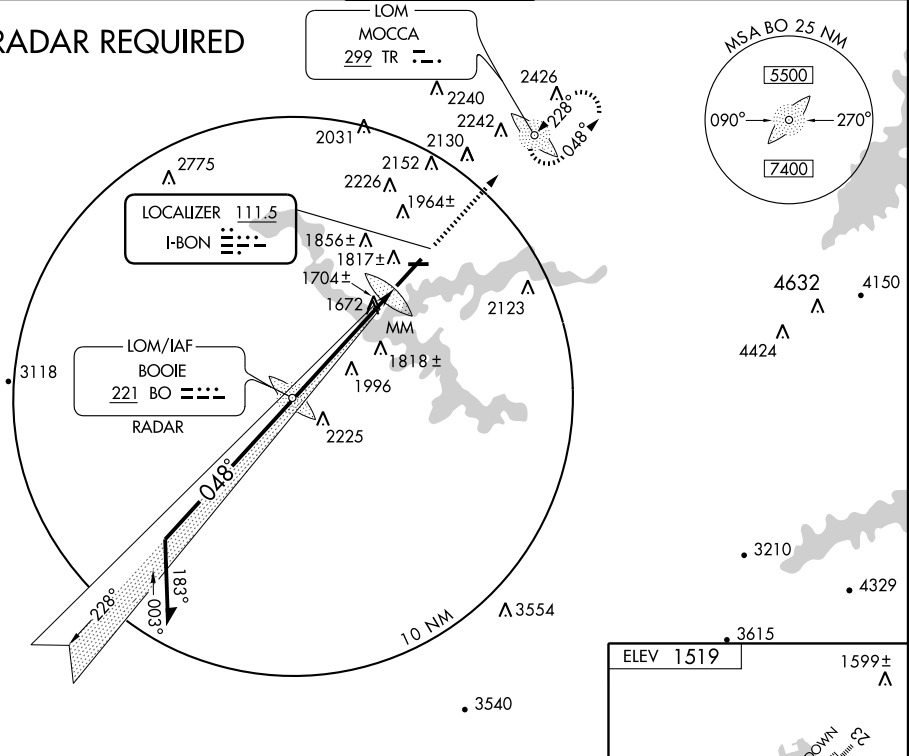
BRISTOL / TRI-CITIES RGNL TN/VA (TRI)

▼ Circling not authorized northwest of Rwy 9 and 23.
 ▲ Autopilot Coupled Approach not authorized below 1739' MSL.
 ▲ RADAR or ADF REQUIRED

MISSED APPROACH: Climb to 4100 direct MOCCA LOM and hold.

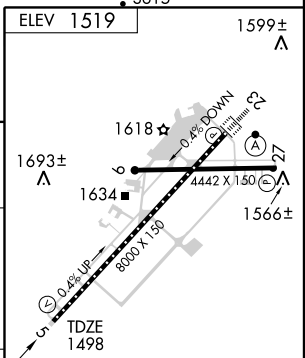
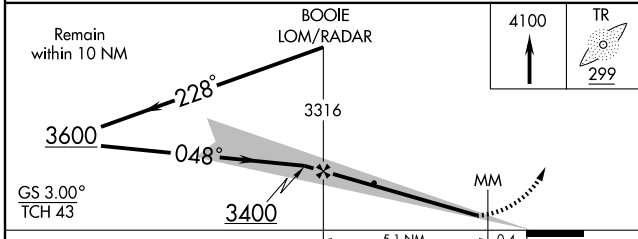
ATIS 118.25	TRI-CITY APP CON* 134.425 317.5	TRI-CITY TOWER* 119.5 (CTAF) 257.8	GND CON 121.7 348.6	UNICOM 122.95
-----------------------	---	--	-------------------------------	-------------------------

RADAR REQUIRED



SE-1, 22 OCT 2009 to 19 NOV 2009

SE-1, 22 OCT 2009 to 19 NOV 2009



CATEGORY	A	B	C	D
S-ILS 5	1698/40		200 (200-¾)	
S-LOC 5	1960/50	462 (500-1)	1960/60 462 (500-1¼)	1960-1½ 462 (500-1½)
CIRCLING	2340-1 821 (900-1)	2340-1¼ 821 (900-1¼)	2340-2½ 821 (900-2½)	2340-2¾ 821 (900-2¾)

FAF to MAP 5.5 NM					
Knots	60	90	120	150	180
Min:Sec	5:30	3:40	2:45	2:12	1:50