

TOPEKA, KANSAS

AL-424 (FAA)

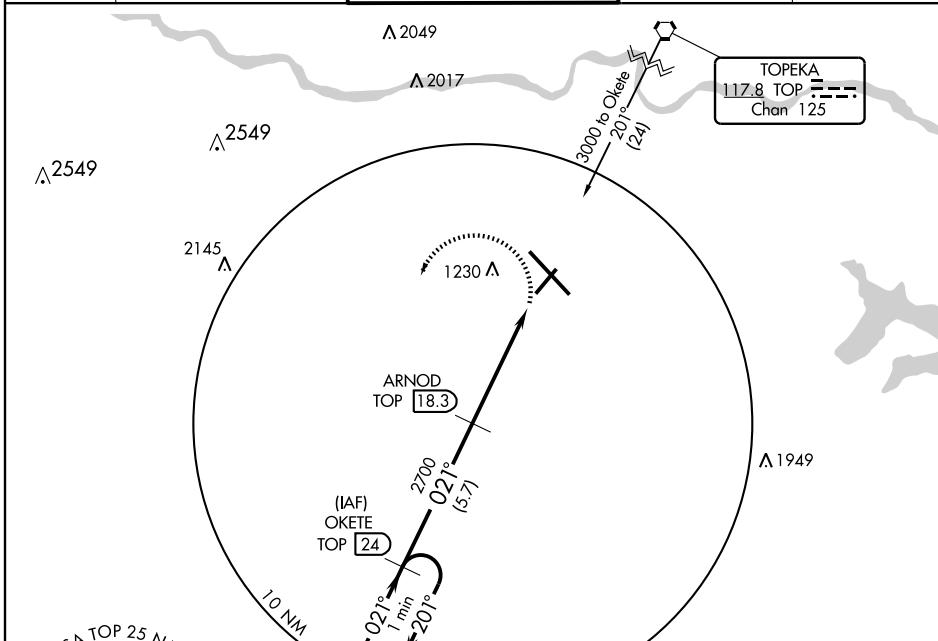
VOR/DME or TACAN RWY 3

TOPEKA/ FORBES FIELD (F/OE)

VORTAC TOP 117.8 Chan 125	APP CRS 021°	Rwy Idg TDZE Apt Elev	7000 1077 1079
---	------------------------	-----------------------------	---

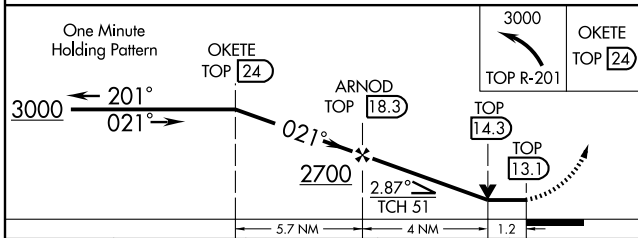
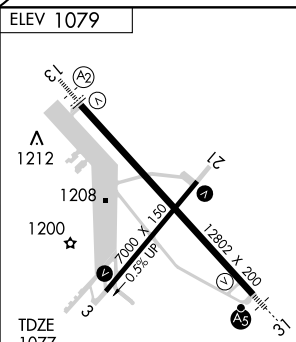
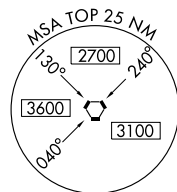
MISSED APPROACH: Climbing left turn to 3000 via TOP R-201 to OKETE/24 DME and hold.

ATIS 128.25	KANSAS CITY CENTER 123.8 343.7	FORBES TOWER* 120.8 (CTAF) 340.2	GND CON 121.7 275.8	UNICOM 122.95
-----------------------	--	--	-------------------------------	------------------

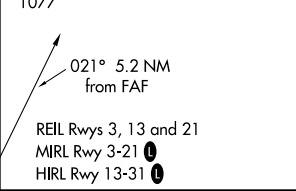


NC-2, 22 OCT 2009 to 19 NOV 2009

NC-2, 22 OCT 2009 to 19 NOV 2009



CATEGORY	A	B	C	D
S-3	1500-1	423 (500-1)	1500-1¼	423 (500-1¼)
CIRCLING	1520-1 441 (500-1)	1580-1 501 (600-1)	1580-1½ 501 (600-1½)	1640-2 561 (600-2)



TOPEKA, KANSAS
Amdt 6 09183

38°57'N-95°40'W

VOR/DME or TACAN RWY 3

TOPEKA/ FORBES FIELD (F/OE)

- REIL Rwy 3, 13 and 21
- MIRL Rwy 3-21
- HIRL Rwy 13-31