

TOPEKA, KANSAS

AL-424 (FAA)

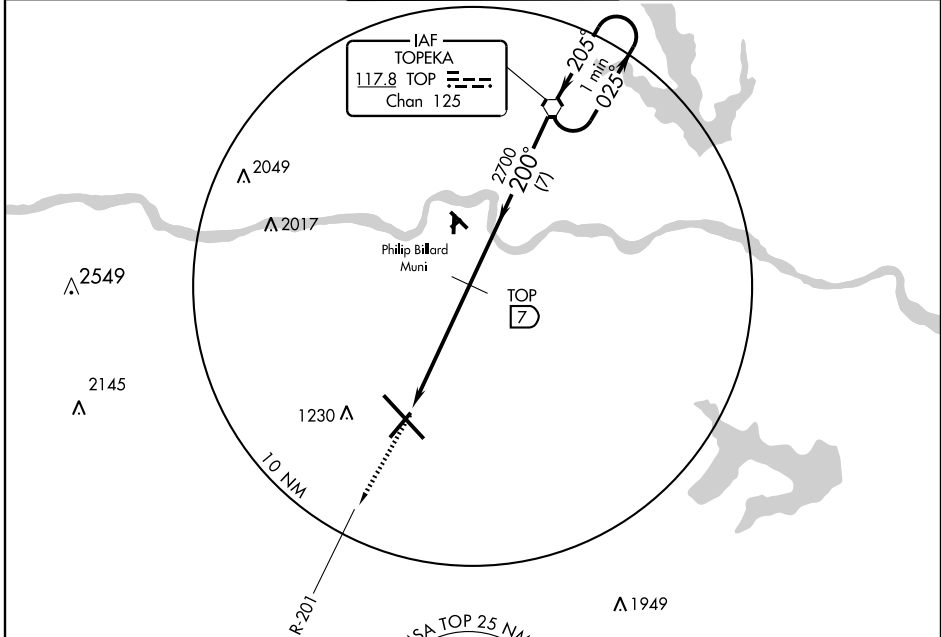
VOR/DME or TACAN RWY 21

TOPEKA/ FORBES FIELD (F^OE)

VORTAC TOP 117.8 Chan 125	APP CRS 200°	Rwy Idg TDZE Apt Elev 7000 1047 1079
--	------------------------	--

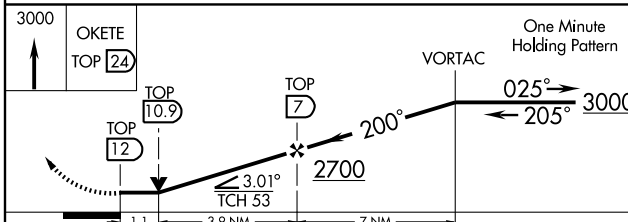
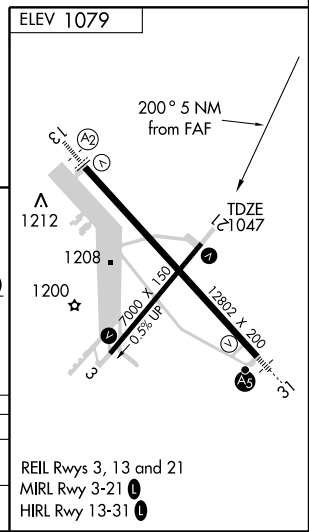
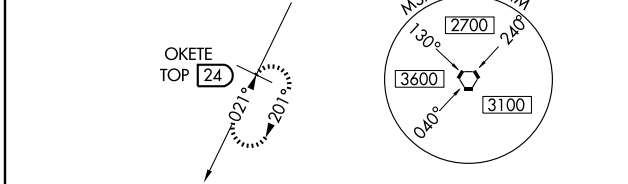
MISSED APPROACH: Climb to 3000 direct OKETE/24 DME and hold.

ATIS 128.25	KANSAS CITY CENTER 123.8 343.7	FORBES TOWER* 120.8 (CTAF) 340.2	GND CON 121.7 275.8	UNICOM 122.95
-----------------------	--	--	-------------------------------	------------------



NC-2, 22 OCT 2009 to 19 NOV 2009

NC-2, 22 OCT 2009 to 19 NOV 2009



CATEGORY	A	B	C	D
S-21	1440-1	393 (400-1)		1440-1½ 393 (400-1½)
CIRCLING	1520-1 441 (500-1)	1580-1 501 (600-1)	1580-1½ 501 (600-1½)	1640-2 561 (600-2)

REIL Rwy 3, 13 and 21
MIRL Rwy 3-21
HIRL Rwy 13-31

TOPEKA, KANSAS
Amdt 7 09183

38°57'N-95°40'W

VOR/DME or TACAN RWY 21

TOPEKA/ FORBES FIELD (F^OE)