

RNAV (GPS) RWY 31

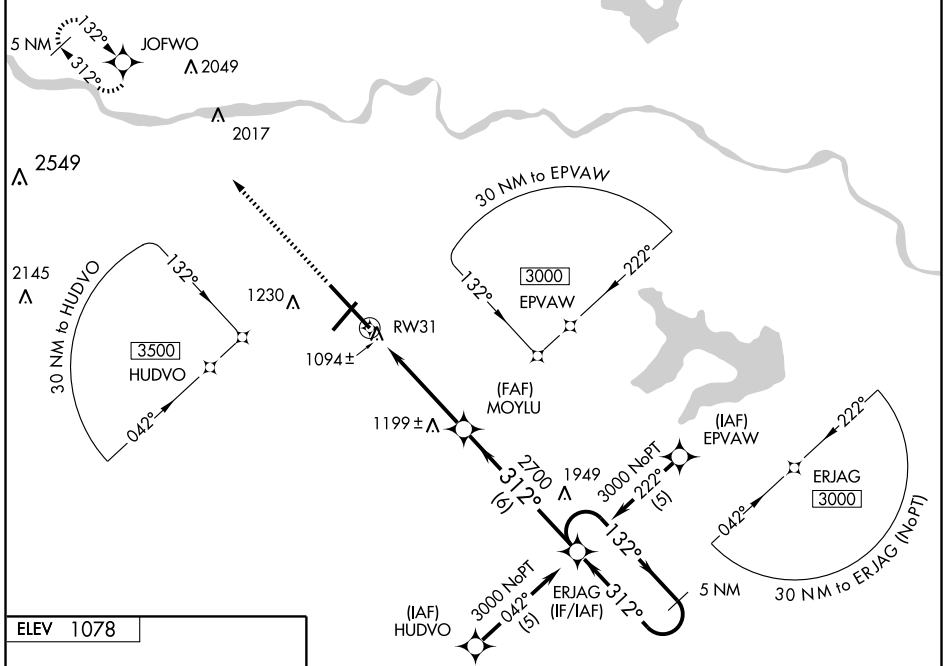
TOPEKA/ FORBES FIELD (F/OE)

WAAS CH 78399 W31A	APP CRS 312°	Rwy Idg 12802 TDZE 1037 Apt Elev 1078
--	------------------------	--

▼ For inoperative MALSR, increase LPV all Cats visibility to RVR 4000, and LNAV/VNAV Cat D to RVR 5000. Baro-VNAV NA when using Philip Billard Muni altimeter setting.
▲ If local altimeter setting not received, use Philip Billard Muni altimeter setting and increase all DAs/MDAs 60 feet. Baro-VNAV NA below -17°C (2°F). DME/DME RNP-0.3 NA. VDP NA when using Philip Billard Muni altimeter setting.

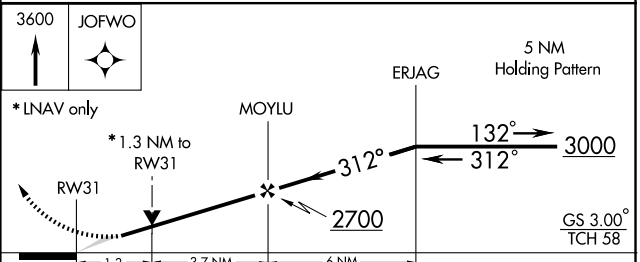
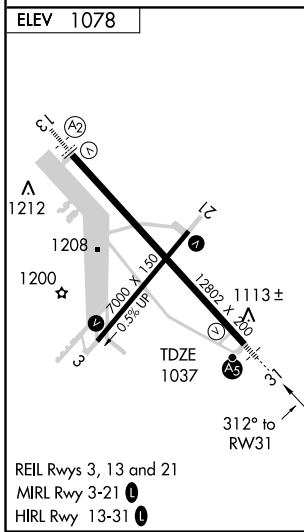
MALSR 	MISSED APPROACH: Climb to 3600 direct JOFWO and hold.
-----------	--

ATIS 128.25	KANSAS CITY CENTER 123.8 343.7	FORBES TOWER* 120.8 (CTAF) 0 340.2	GND CON 121.7 275.8	UNICOM 122.95
-----------------------	--	--	-------------------------------	------------------



NC-2, 22 OCT 2009 to 19 NOV 2009

NC-2, 22 OCT 2009 to 19 NOV 2009



CATEGORY	A	B	C	D
LPV DA	1298/24		261 (300-½)	
LNAV/VNAV DA	1357/24		320 (300-½)	
LNAV MDA	1500/24	463 (500-½)	1500/40 463 (500-¾)	1500/50 463 (500-1)
CIRCLING	1520-1 442 (500-1)	1580-1 502 (600-1)	1580-1½ 502 (600-1½)	1640-2 562 (600-2)