

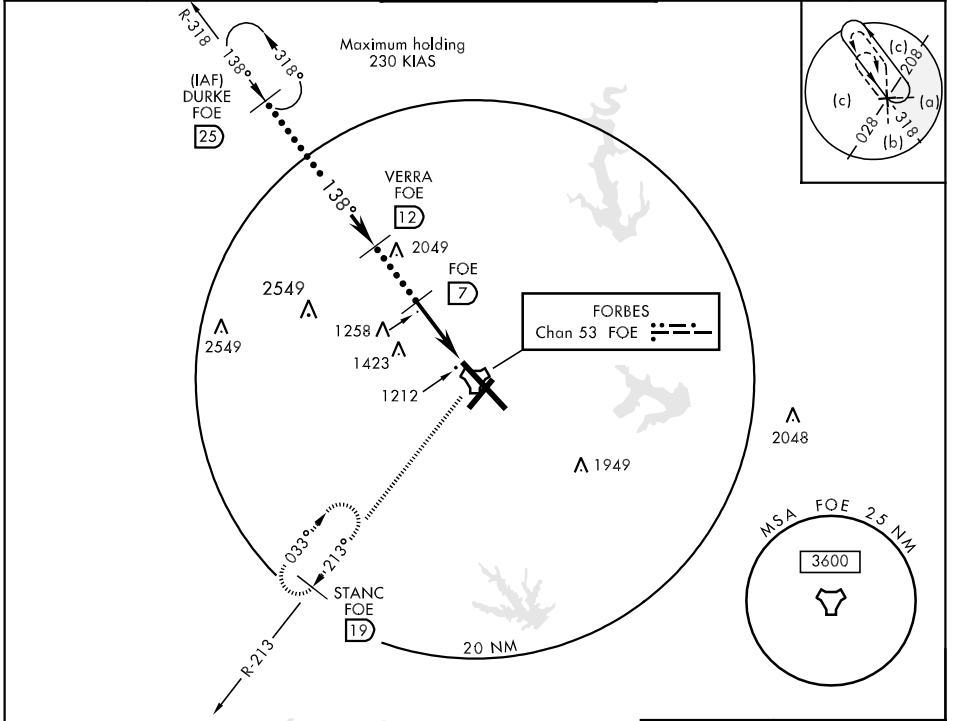
TACAN FOF Chan <b>53</b>	APCH CRS <b>138°</b>	Rwy Idg <b>12,802</b> TDZE <b>1065</b> Arpt Elev <b>1078</b>	JAL-424 [USAF]	TOPEKA/FORBES FLD (KFOE)
-----------------------------	-------------------------	--	----------------	--------------------------

\* Inoperative table does not apply to CAT C.

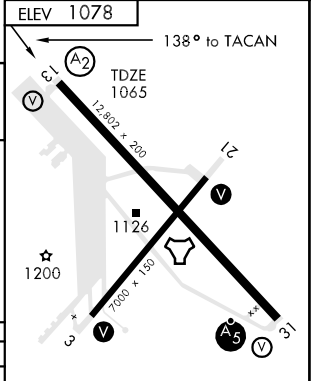
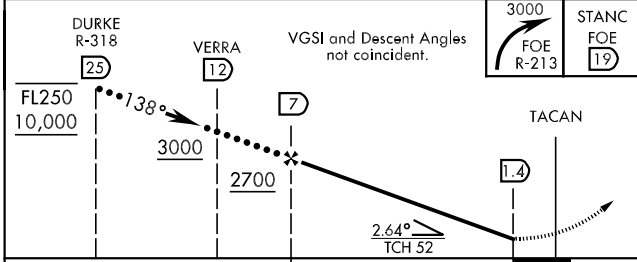
SALS  
A2

MISSED APPROACH: Climbing right turn to 3000 via FOF TACAN R-213 to STANC/19 DME and hold.

ATIS ★ <b>128.25</b>	KANSAS CITY CENTER <b>123.8 343.7</b>	FORBES TOWER ★ <b>120.8 0 340.2</b>	GND CON <b>121.7 275.8</b>	ASOS
-------------------------	--	--	-------------------------------	------



EMERG SAFE ALT 100 NM 3600



CATEGORY	C	D	E
S-13 *	1500-1¼ 435 (500-1¼)	1500-1½	435 (500-1½)
CIRCLING	1580-1½ 501 (600-1½)	1640-2 561 (600-2)	1720-2¼ 641 (700-2¼)

MIRL Rwy 3-21  
REIL Rwy 3, 13, and 21  
HIRL Rwy 13-31



NC-2, 22 OCT 2009 to 19 NOV 2009

NC-2, 22 OCT 2009 to 19 NOV 2009