

WAAS Ch 87099 W13A	APP CRS 130°	Rwy Idg 4559 TDZE 387 Apt Elev 390
--	------------------------	---

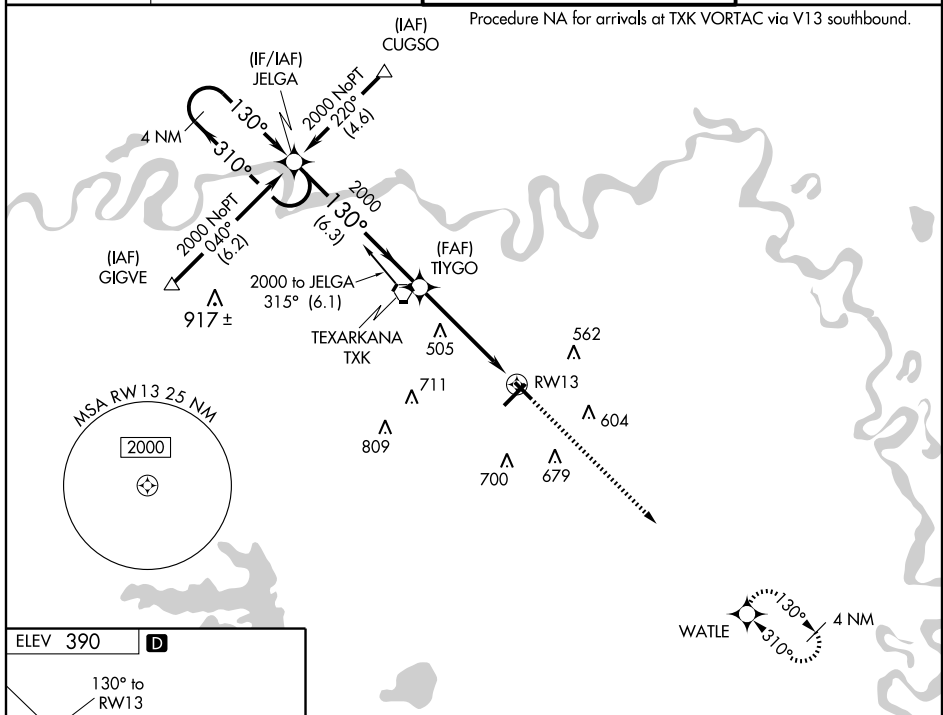
RNAV (GPS) RWY 13

TEXARKANA RGNI-WEBB FIELD (TXK)

⚠ DME/DME RNP-0.3 NA. Visibility reduction by helicopter NA. For uncompensated Baro-VNAV systems, LNAV/VNAV NA below -15°C (5°F) or above 48°C (118°F). When local altimeter setting not received, use J Lynn Helms Sevier County altimeter setting and increase all DA/MDA 100 feet, increase LPV and LNAV/VNAV all Cats visibility ½ mile, LNAV and circling Cat C and D visibility ½ mile. Baro-VNAV and VDP NA when using J Lynn Helms Sevier County altimeter setting.

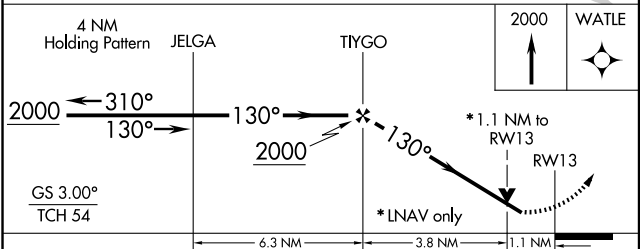
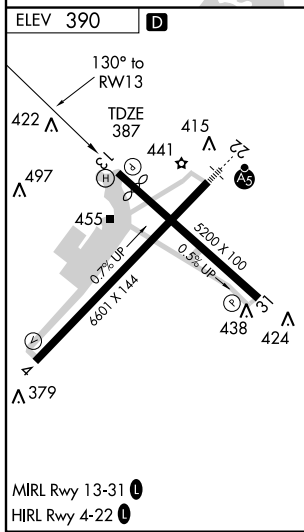
⚠ MISSED APPROACH: Climb to 2000 direct WATLE and hold.

ATIS 120.2	FORT WORTH CENTER 123.925 269.475	TEXARKANA TOWER ★ 123.875 (CTAF) 235.625	GND CON 119.225
----------------------	---	--	---------------------------



SC-1, 22 OCT 2009 to 19 NOV 2009

SC-1, 22 OCT 2009 to 19 NOV 2009



CATEGORY	A	B	C	D
LPV DA		647-1	260 (300-1)	
LNAV/VNAV DA		767-1½	380 (400-1½)	
LNAV MDA		760-1	373 (400-1)	760-1¼ 373 (400-1¼)
CIRCLING	820-1½ 430 (500-1½)	860-1½ 470 (500-1½)	900-1½ 510 (600-1½)	1000-2 610 (700-2)