

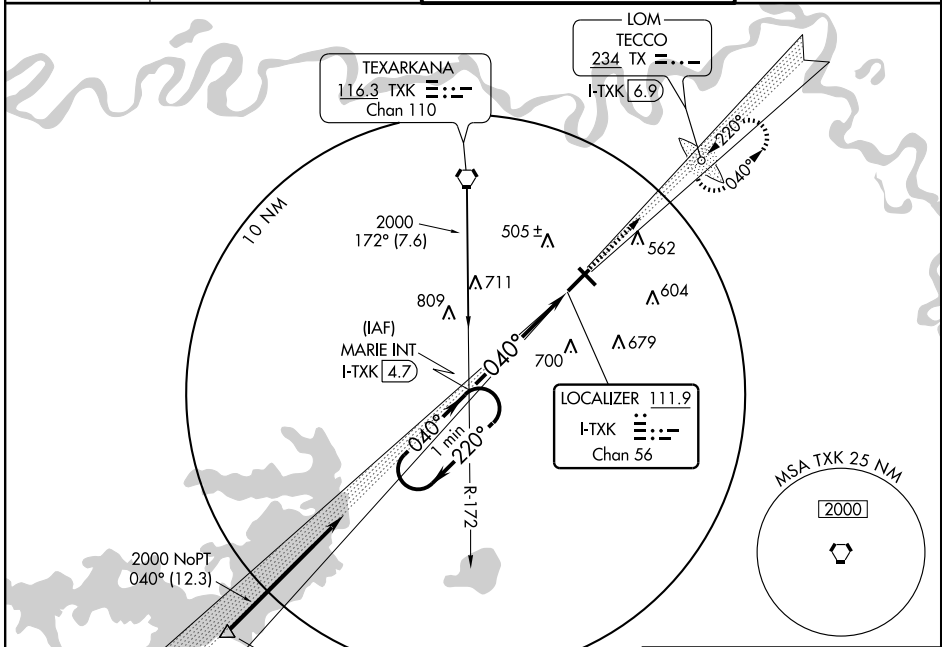
LOC/DME I-TXK <b>111.9</b> Chan <b>56</b>	APP CRS <b>040°</b>	Rwy Idg <b>6601</b> TDZE <b>360</b> Apt Elev <b>390</b>
---	------------------------	---

**LOC BC RWY 4**  
TEXARKANA RGNL-WEBB FIELD (T'X'K)

**⚠** Visibility reduction by helicopters NA. ADF or DME required. When local altimeter setting not received, use J Lynn Helms Sevier County altimeter setting and increase all MDA 100 feet, and increase S-4 Cats C/D and Circling Cats C/D visibility ¼ mile.

**⚠** MISSED APPROACH: Climb to 2100 via I-TXK northeast course to TECCO LOM/I-TXK 6.9 DME and hold.

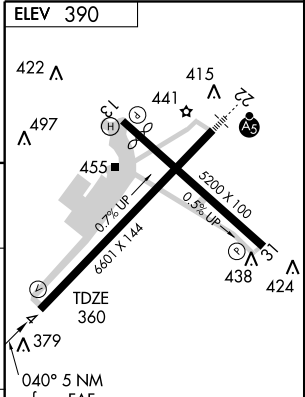
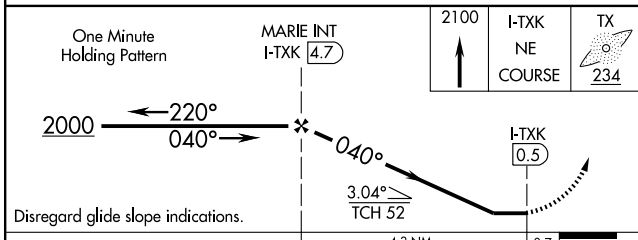
ATIS <b>120.2</b>	FORT WORTH CENTER <b>123.925 269.475</b>	TEXARKANA TOWER ★ <b>123.875</b> (CTAF) <b>235.625</b>	GND CON <b>119.225</b>
----------------------	---	---	---------------------------



SC-1, 22 OCT 2009 to 19 NOV 2009

SC-1, 22 OCT 2009 to 19 NOV 2009

**BACK COURSE**



CATEGORY	A	B	C	D
S-4	880-1 520 (500-1)		880-1½ 520 (500-1½)	880-1¾ 520 (500-1¾)
CIRCLING	880-1 490 (500-1)		900-1½ 510 (600-1½)	1000-2 610 (700-2)

FAF to MAP 4.3 NM					
Knots	60	90	120	150	180
Min:Sec	4:18	2:52	2:09	1:43	1:26