

ILS or LOC RWY 22

TEXARKANA RGNL-WEBB FIELD (TXK)

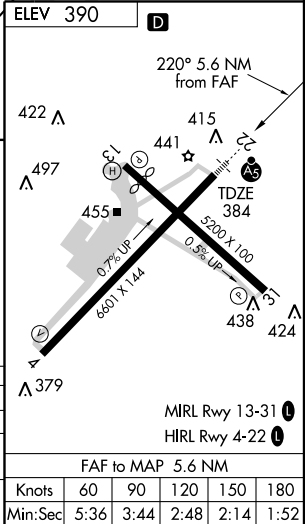
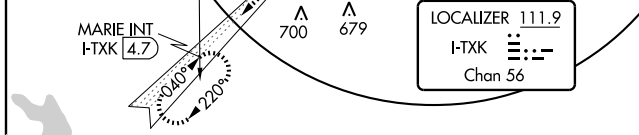
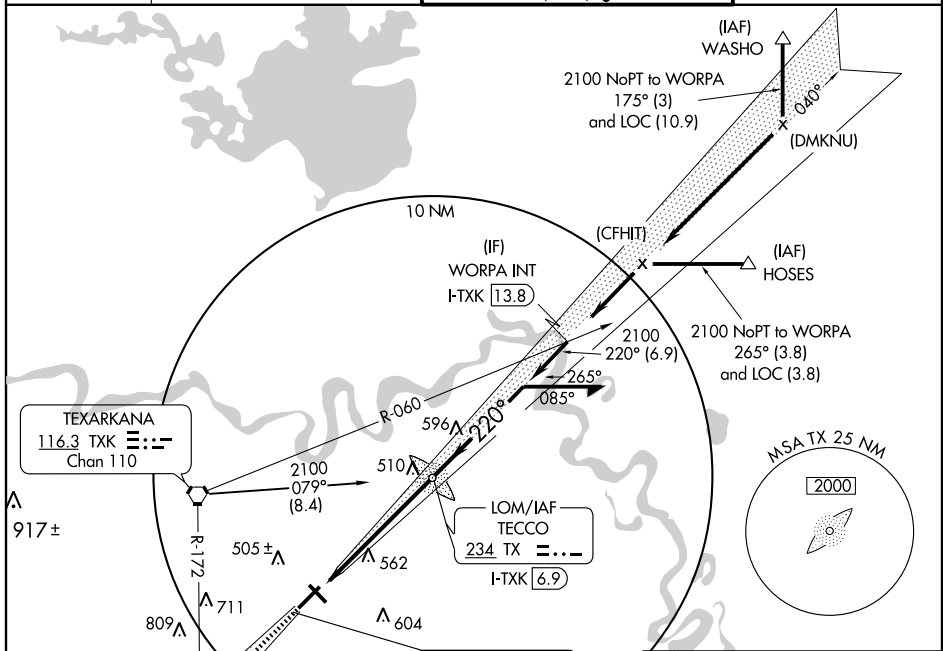
LOC/DME I-TXK 111.9 Chan 56	APP CRS 220°	Rwy Idg 6601 TDZE 384 Apt Elev 390
---	------------------------	---

▼ When local altimeter setting not received, use J Lynn Helms Sevier County altimeter setting and increase all DA/MDA 100 feet. Increase S-LOC 22 Cats C/D and Circling Cats C/D visibility 1/4 mile. For inoperative MALSR when using J Lynn Helms Sevier County altimeter setting, increase S-ILS 22 all Cats visibility to 1. VDP NA when using J Lynn Helms Sevier County altimeter setting.



MISSED APPROACH: Climb to 2000 via I-TXK southwest course to MARIE Int/I-TXK 4.7 DME and hold.

ATIS 120.2	FORT WORTH CENTER 123.925 269.475	TEXARKANA TOWER* 123.875 (CTAF) 235.625	GND CON 119.225
----------------------	---	---	---------------------------



CATEGORY	A	B	C	D
S-ILS 22		584-1/2	200 (200-1/2)	
S-LOC 22	760-1/2	376 (400-1/2)		760-3/4 376 (400-3/4)
CIRCLING	820-1 430 (500-1)	860-1 470 (500-1)	900-1 1/2 510 (600-1 1/2)	1000-2 610 (700-2)

SC-1, 22 OCT 2009 to 19 NOV 2009

SC-1, 22 OCT 2009 to 19 NOV 2009