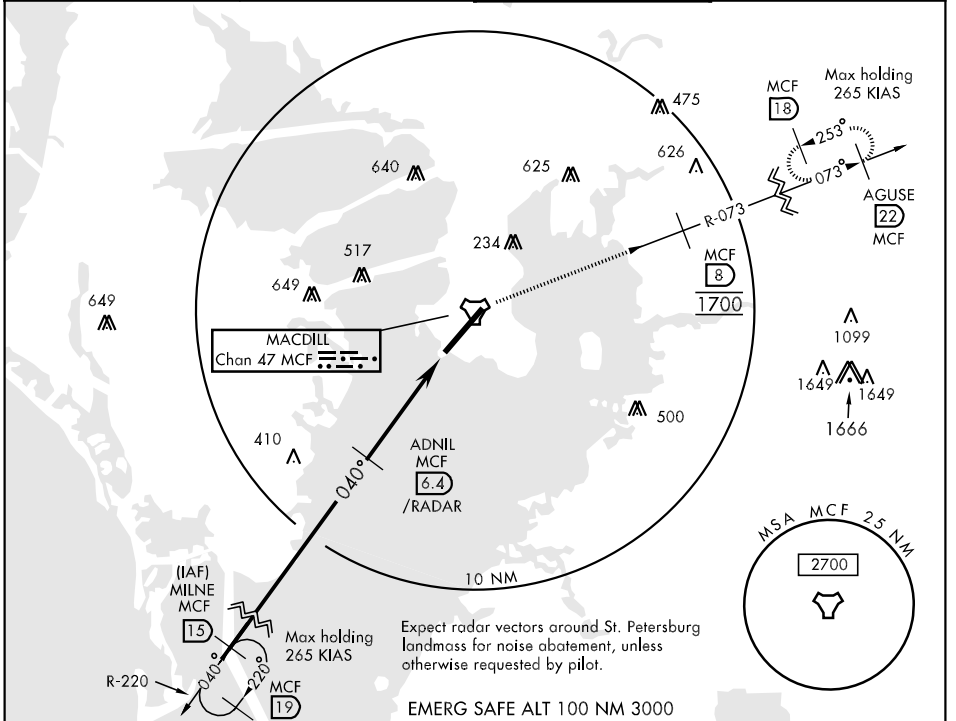


TACAN MCF Chan 47	APCH CRS 040°	Rwy Idg 11,421 TDZE 10 Arprt Elev 14	AL-418 [USAF]	MACDILL AFB (KMCF)
----------------------	------------------	--	---------------	--------------------

▼ *When ALS inop, increase CAT AB RVR to 50 and vis to 1 mile, CAT CD RVR to 60 and vis to 1¼ miles, CAT E vis to 1½.
 **Circling not authorized NW of Rwy 4-22.

ALSF-1 A1 MISSED APPROACH: Climb to 2700 via MCF R-073 to 22 DME and hold. Cross 8 DME at 1700.

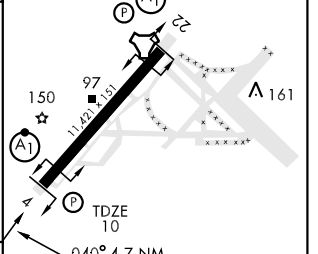
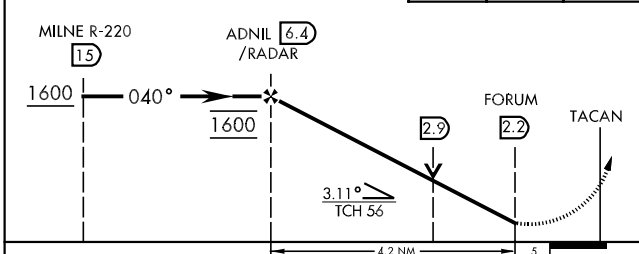
ATIS 133.825 270.1	TAMPA APP CON 124.95 354.0	MACDILL TOWER 123.7 294.7	GND CON 118.575 275.8
-----------------------	-------------------------------	------------------------------	--------------------------



Expect radar vectors around St. Petersburg landmass for noise abatement, unless otherwise requested by pilot.

EMERG SAFE ALT 100 NM 3000

1700 MCF R-073	MCF R-073 8	2700 MCF 22	ELEV 14
----------------	-------------	-------------	---------



CATEGORY	A	B	C	D	E
S-4 *	420/24 410 (500-½)	420/40 410 (500-¾)	420/50 410 (500-1)		
CIRCLING **	500-1 486 (500-1)	500-1½ 486 (500-1½)	580-2 566 (600-2)	740-2½ 726(800-2½)	

HIRL Rwy 4-22

SE-3, 22 OCT 2009 to 19 NOV 2009

SE-3, 22 OCT 2009 to 19 NOV 2009