

TAMPA, FLORIDA

# RNAV (GPS) RWY 22

APCH CRS	Rwy ldg	11,421
227°	TDZE	14
	Arpt Elev	14

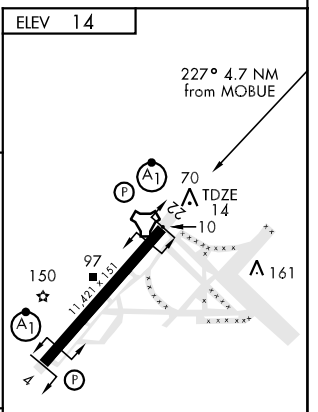
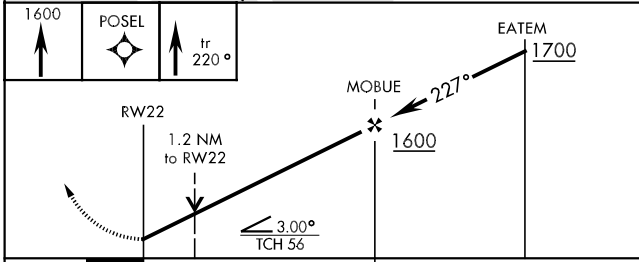
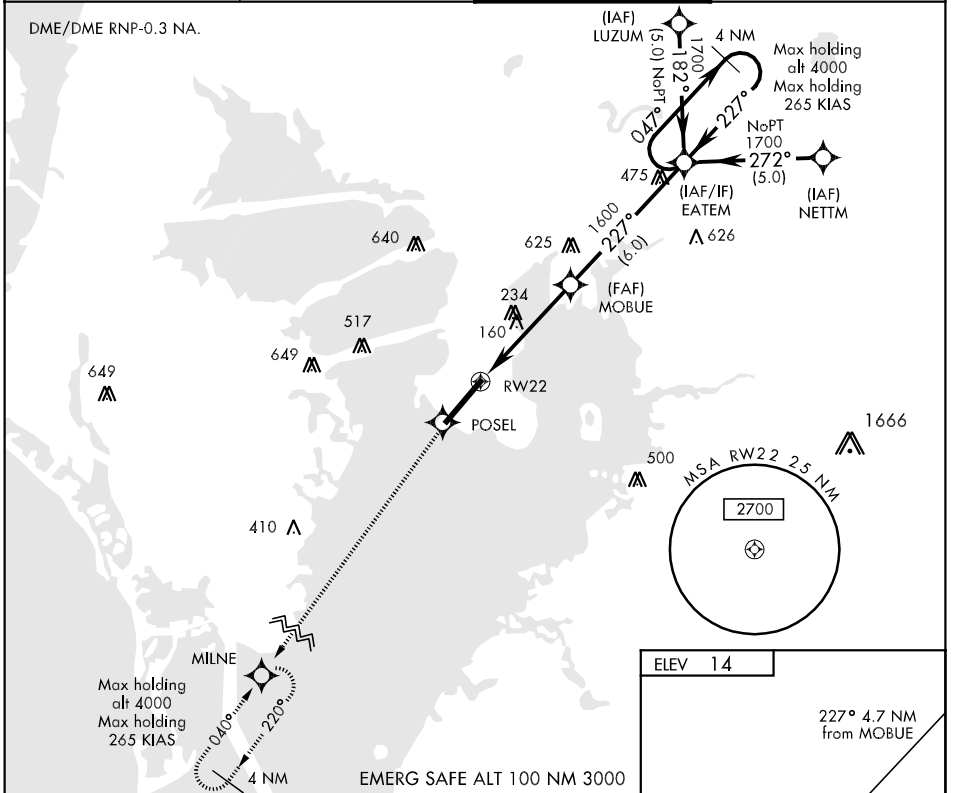
AL-418 [USAF]

MACDILL AFB (KMCF)

▼ \* When ALS inop, increase CAT AB RVR to 50 and vis to 1 mile, CAT C RVR to 60 and vis to 1¼ miles, CAT DE vis to 1½ miles.  
 \*\* Circling not authorized NW of Rwy 4-22.

ALSF-1 MISSED APPROACH: Climb to 1600 direct POSEL, then via 220° track to MILNE and hold.

ATIS 133.825 270.1	TAMPA APP CON 124.95 354.0	MACDILL TOWER 123.7 294.7	GND CON 118.575 275.8
-----------------------	-------------------------------	------------------------------	--------------------------



CATEGORY	A	B	C	D	E
LNAV MDA *	460/24 446 (500-½)		460/40 446 (500-¾)	460/50 446 (500-1)	
CIRCLING **	500-1	486 (500-1)	500-1½ 486 (500-1½)	580-2 566 (600-2)	740-2½ 726(800-2½)

HIRL Rwy 4-22

TAMPA, FLORIDA  
 Orig 08157

27°51'N-82°31'W

MACDILL AFB (KMCF)

# RNAV (GPS) RWY 22

SE-3, 22 OCT 2009 to 19 NOV 2009

SE-3, 22 OCT 2009 to 19 NOV 2009