

TAMPA, FLORIDA

AL-417 (FAA)

RNAV (GPS) RWY 35

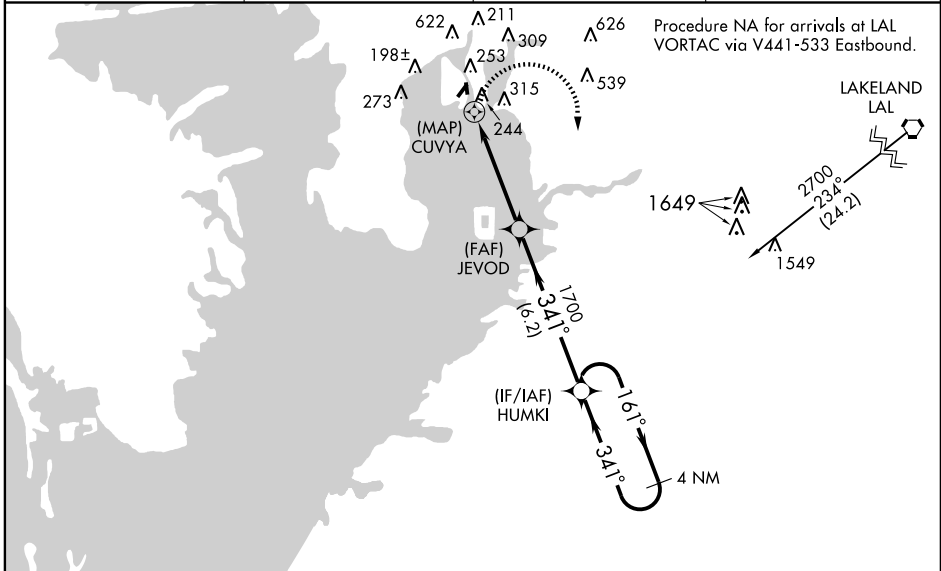
TAMPA/PETER O KNIGHT (TPF)

APP CRS	Rwy Idg	2400
341°	TDZE	7
	Apt Elev	8

⚠ When local altimeter setting not received, use Tampa Intl altimeter setting and increase all MDA 20 feet. Visibility reduction by helicopters NA.
⚠ Circling to Rwy 17 NA. Circling to Rwy 21 NA at night.
 Circling NA NW of Rwy 21-3. DME/DME RNP-0.3 NA.

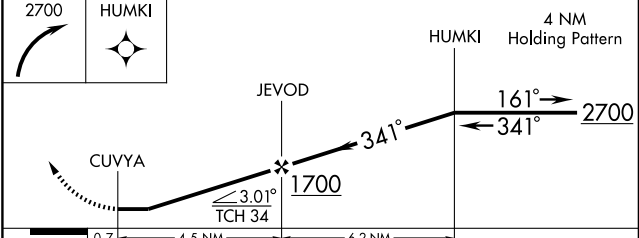
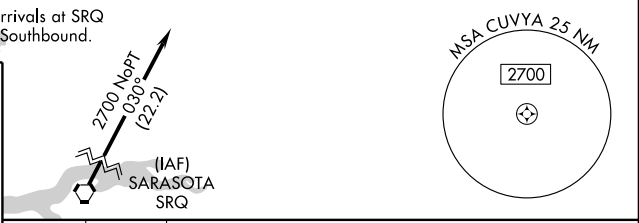
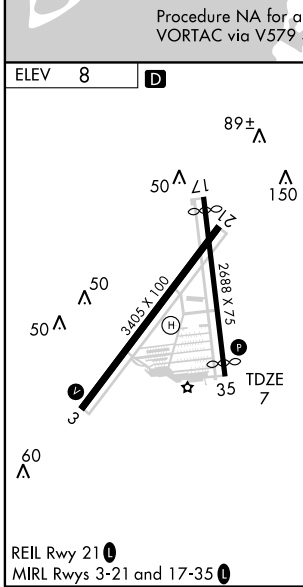
MISSED APPROACH: Climbing right turn to 2700 direct HUMKI and hold.

AWOS-3 118.925	TAMPA APP CON 119.9 290.3	CLNC DEL 119.8	UNICOM 122.725 (CTAF) 📻
--------------------------	-------------------------------------	--------------------------	--



SE-3, 22 OCT 2009 to 19 NOV 2009

SE-3, 22 OCT 2009 to 19 NOV 2009



CATEGORY	A	B	C	D
LNAV MDA	500-1	493 (500-1)	NA	
CIRCLING	560-1	680-1	NA	
	552 (600-1)	672 (700-1)		

TAMPA, FLORIDA
 Amdt 1 09239

27° 55' N - 82° 27' W

RNAV (GPS) RWY 35

TAMPA/PETER O KNIGHT (TPF)