

TAMPA, FLORIDA

AL-417 (FAA)

# NDB RWY 3

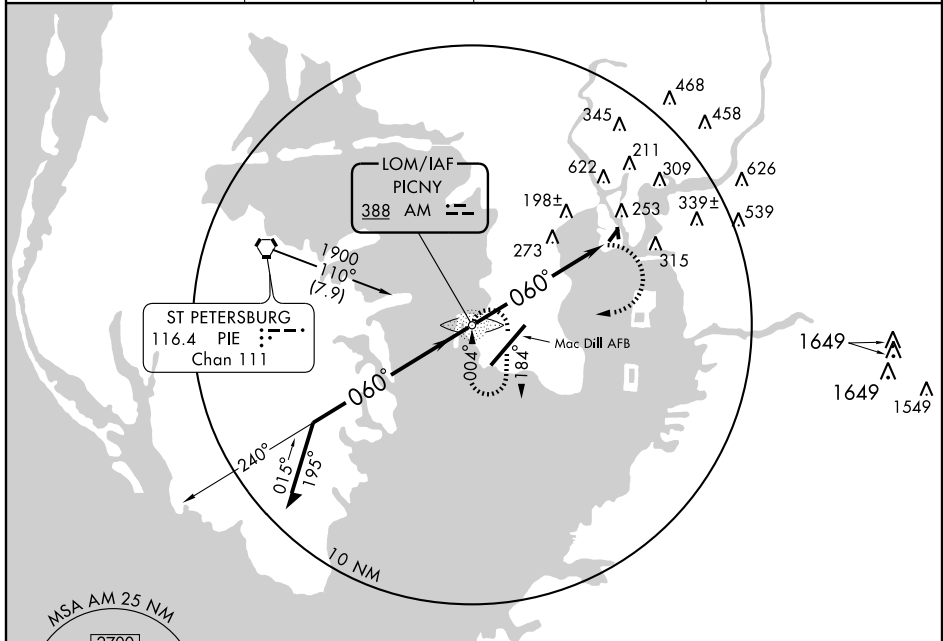
TAMPA/PETER O KNIGHT (TPF)

LOM AM <b>388</b>	APP CRS <b>060°</b>	Rwy Idg <b>3405</b>
		TDZE <b>8</b>
		Apt Elev <b>8</b>

**V** If local altimeter setting not received, use Tampa Intl altimeter setting and increase all MDAs 20 feet.  
**NA** Circling NA NW of Rwy 21-3. Circling to Rwy 17 NA.

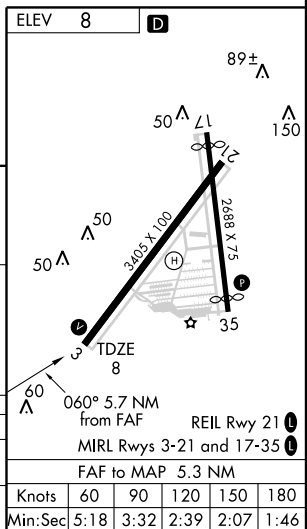
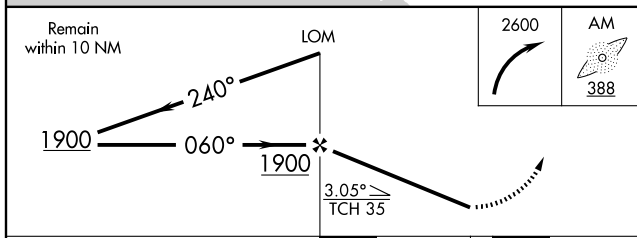
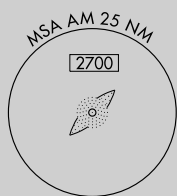
**MISSED APPROACH:** Climbing right turn to 2600 direct PICNY LOM and hold, continue climb-in-hold to 2600.

AWOS-3 <b>118.925</b>	TAMPA APP CON <b>119.9 290.3</b>	CLNC DEL <b>119.8</b>	UNICOM <b>122.725 (CTAF)</b>
--------------------------	-------------------------------------	--------------------------	---------------------------------



SE-3, 22 OCT 2009 to 19 NOV 2009

SE-3, 22 OCT 2009 to 19 NOV 2009



CATEGORY	A	B	C	D
S-3	640-1	632 (700-1)	640-1¾ 632 (700-1¾)	NA
CIRCLING	640-1 632 (700-1)	680-1 672 (700-1)	680-2 672 (700-2)	NA

TAMPA, FLORIDA  
Amdt 11 09239

27°55'N-82°27'W

TAMPA/PETER O KNIGHT (TPF)  
**NDB RWY 3**