

TAMPA, FLORIDA

AL-416 (FAA)

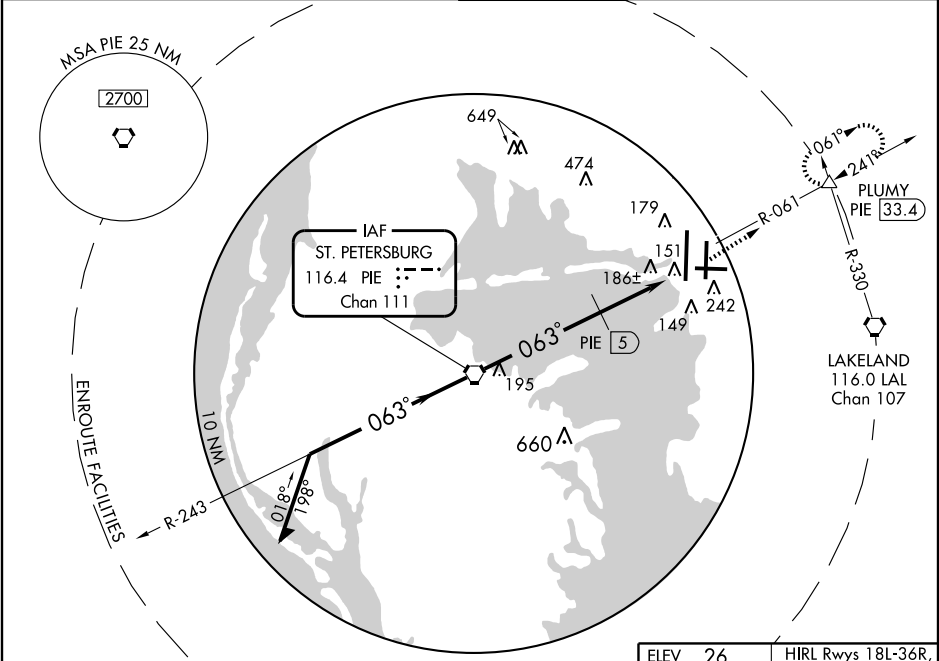
VOR RWY 9

TAMPA INTL (TPA)

VORTAC PIE 116.4 Chan 111	APP CRS 063°	Rwy Idg TDZE 20 Apt Elev 26	6999
---	------------------------	---	-------------

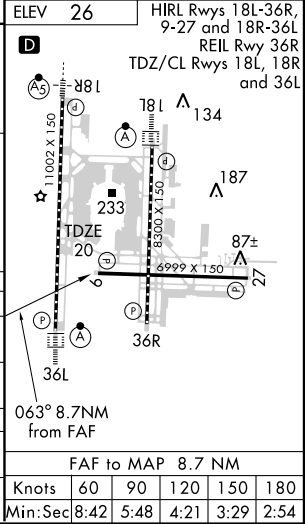
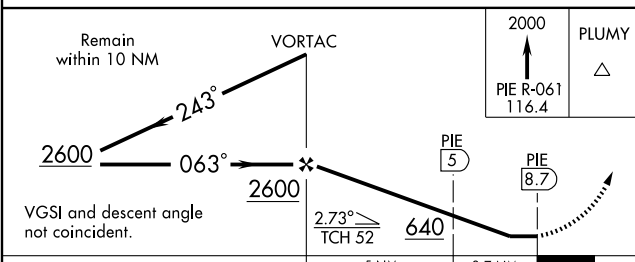
MISSED APPROACH: Climb to 2000 via PIE R-061 to PLUMY Int/33.4 DME and hold.

ARR 126.45	ATIS 128.475	DEP 128.475	TAMPA APP CON 118.5 290.3	TAMPA TOWER 119.5 269.4	GND CON 121.7 269.4	CLNC DEL 133.6
----------------------	------------------------	-----------------------	-------------------------------------	--	-------------------------------	--------------------------



SE-3, 22 OCT 2009 to 19 NOV 2009

SE-3, 22 OCT 2009 to 19 NOV 2009



CATEGORY	A	B	C	D
S-9	640-1	620 (700-1)	640-1 $\frac{3}{4}$ 620 (700-1 $\frac{3}{4}$)	640-2 620 (700-2)
CIRCLING	640-1	614 (700-1)	640-1 $\frac{3}{4}$ 614 (700-1 $\frac{3}{4}$)	640-2 614 (700-2)
DME MINIMUMS				
S-9	480-1	460 (500-1)	480-1 $\frac{1}{4}$ 460 (500-1 $\frac{1}{4}$)	480-1 $\frac{1}{2}$ 460 (500-1 $\frac{1}{2}$)
CIRCLING	560-1	534 (600-1)	560-1 $\frac{1}{2}$ 534 (600-1 $\frac{1}{2}$)	580-2 554 (600-2)

TAMPA, FLORIDA
Amdt 8 09295

27° 59' N - 82° 32' W

TAMPA INTL (TPA)

VOR RWY 9

Knots	60	90	120	150	180
Min:Sec	8:42	5:48	4:21	3:29	2:54