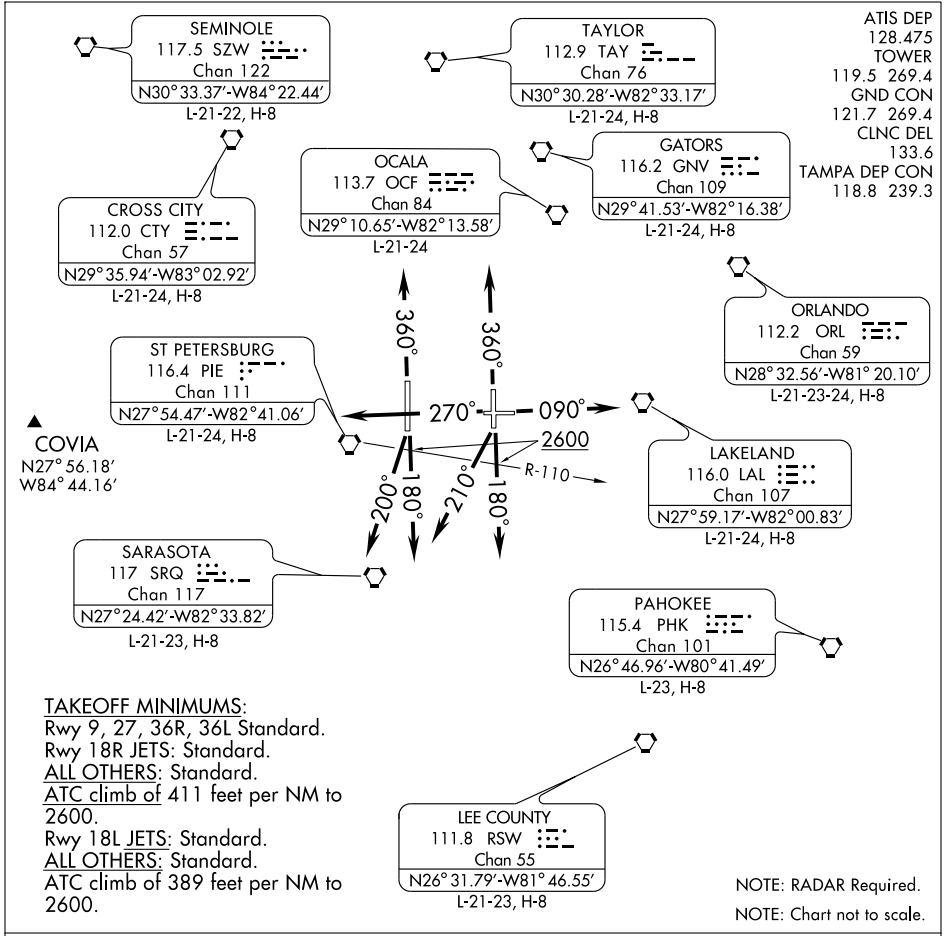


TAMPA FOUR DEPARTURE



SE-3, 22 OCT 2009 to 19 NOV 2009

SE-3, 22 OCT 2009 to 19 NOV 2009

DEPARTURE ROUTE DESCRIPTION

- TAKEOFF RWY 9: Climb heading 090°, Thence...
- TAKEOFF RWY 18R: JETS: Climb heading 200°, Thence... ALL OTHERS: Climb heading 180° to cross PIE R-110 at or above 2600, thence...
- TAKEOFF RWY 18L: JETS: Climb heading 210°, Thence... ALL OTHERS: Climb heading 180° to cross PIE R-110 at or above 2600, thence...
- TAKEOFF RWY 27: Climb heading 270°, Thence...
- TAKEOFF RWY 36R/36L: Climb heading 360°, or as assigned by ATC. Thence...

Expect vectors to join filed/assigned route. JETS: Maintain 6000. ALL OTHERS: Maintain 3000. Expect clearance to filed altitude/flight level within 10 minutes after departure.

(CONTINUED ON NEXT PAGE)