

RNAV (RNP) Y RWY 18L

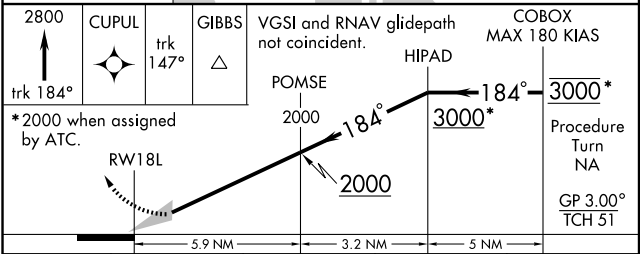
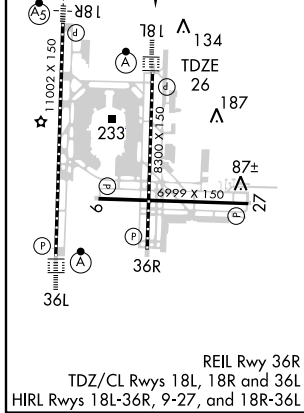
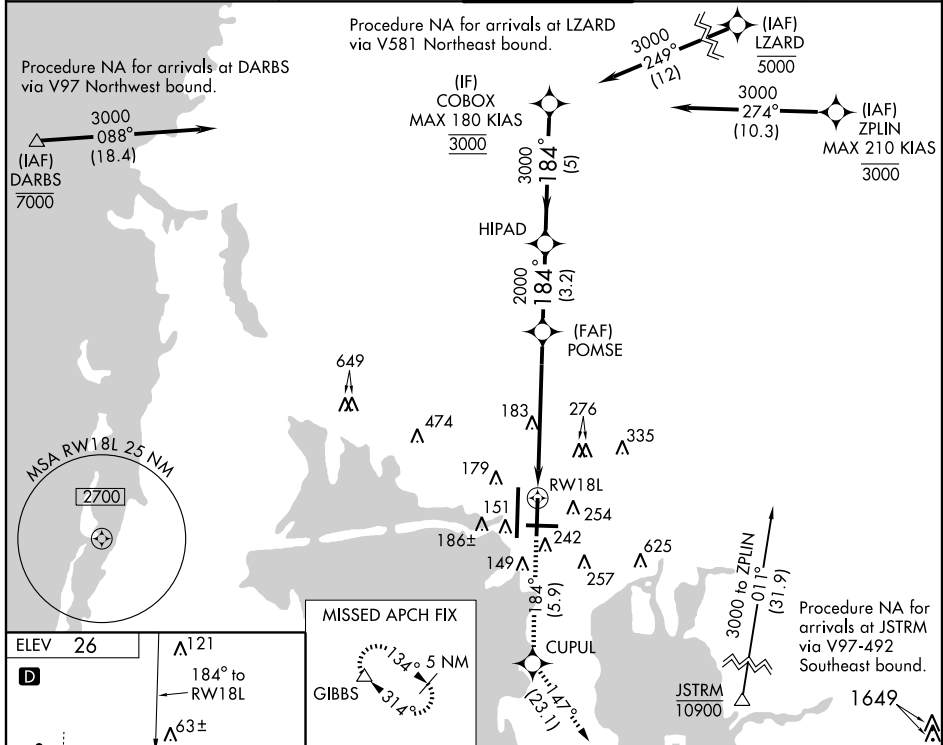
TAMPA INTL (TPA)

APP CRS	Rwy Idg	8300
184°	TDZE	26
	Apt Elev	26

NA For inoperative ALSF, increase RNP 0.11 all Cats visibility to RVR 5000, RNP 0.23 and RNP 0.30 all Cats visibility to 1 1/2. For uncompensated Baro-VNAV systems, procedure NA below -2°C (29°F) or above 48°C (120°F). GPS Required.

ALSF-2
MISSED APPROACH: Climb to 2800 via 184° track to CUPUL, 147° track to GIBBS and hold.

ARR	ATIS	DEP	TAMPA APP CON	TAMPA TOWER	GND CON	CLNC DEL
126.45		128.475	118.5 290.3	119.5 269.4	121.7 269.4	133.6



CATEGORY	A	B	C	D
RNP 0.11 DA		329/24	303 (400-1/2)	
RNP 0.23 DA		356/40	330 (400-3/4)	
RNP 0.30 DA		423/50	397 (400-1)	

SPECIAL AIRCRAFT & AIRCREW AUTHORIZATION REQUIRED

SE-3, 22 OCT 2009 to 19 NOV 2009

SE-3, 22 OCT 2009 to 19 NOV 2009