

TAMPA, FLORIDA

AL-416 (FAA)

RNAV (GPS) RWY 36R

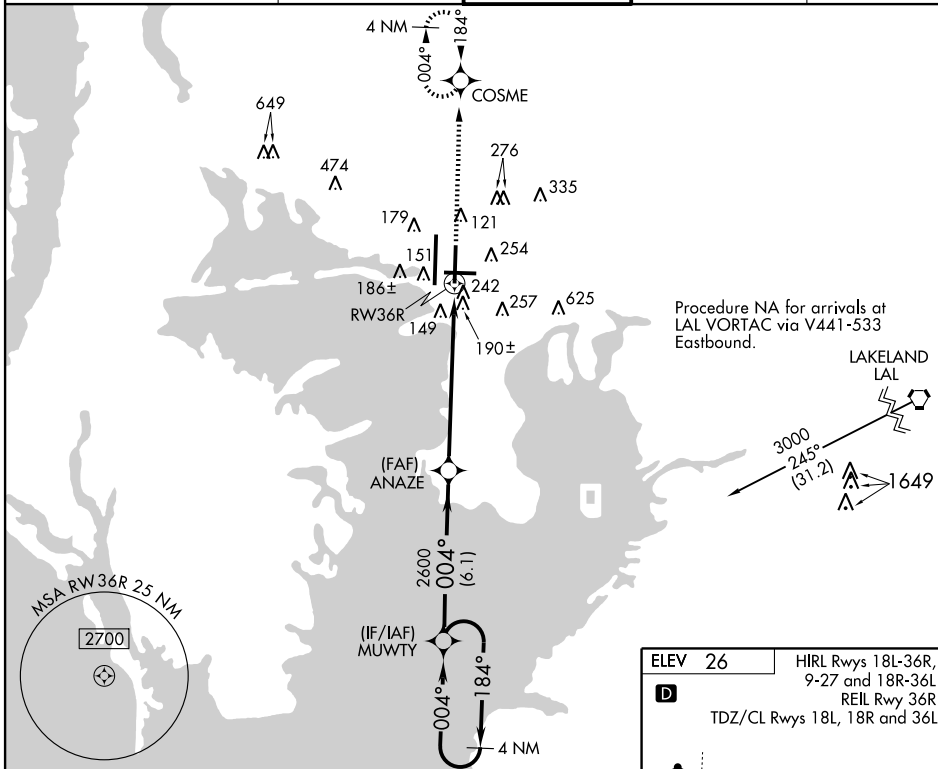
TAMPA INTL (TPA)

WAAS CH 87105 W36B	APP CRS 004°	Rwy Idg 8300 TDZE 20 Apt Elev 26
--	------------------------	---

⚠ For uncompensated Baro-VNAV systems, LNAV/VNAV NA below -15°C (5°F) or above 48°C (118°F).
⚠ DME/DME RNP-0.3 NA.

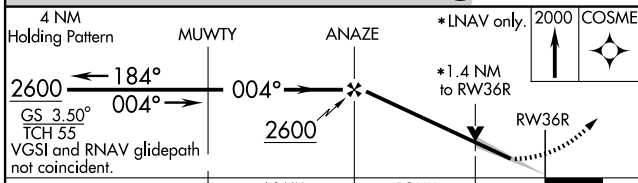
MISSED APPROACH: Climb to 2000 direct COSME and hold.

ARR 126.45	ATIS 128.475	DEP 118.5 290.3	TAMPA APP CON 119.5 269.4	TAMPA TOWER 121.7 269.4	GND CON 133.6	CLNC DEL 133.6
----------------------	------------------------	---------------------------	-------------------------------------	-----------------------------------	-------------------------	--------------------------

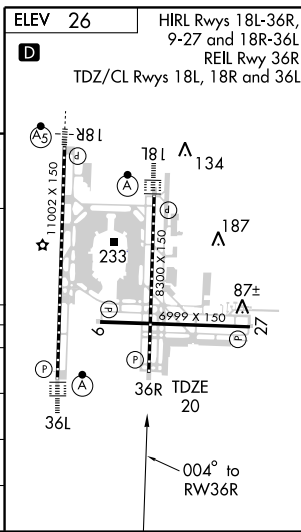


SE-3, 22 OCT 2009 to 19 NOV 2009

SE-3, 22 OCT 2009 to 19 NOV 2009



CATEGORY	A	B	C	D	E
LPV DA	303-3/4	283 (300-3/4)	303-1 283 (300-1)	NA	NA
LNAV/VNAV DA	610-13/4	590 (600-13/4)		NA	NA
LNAV MDA	540-1	520 (600-1)	540-1 1/2 520 (600-1 1/2)	540-1 3/4	520 (600-1 3/4)
CIRCLING	560-1	534 (600-1)	560-1 1/2 534 (600-1 1/2)	580-2 554 (600-2)	940-3 914 (1000-3)



TAMPA, FLORIDA
Amdt 1 09295

27°59'N - 82°32'W

RNAV (GPS) RWY 36R

TAMPA INTL (TPA)