

TAMPA, FLORIDA

AL-416 (FAA)

RNAV (GPS) RWY 36L

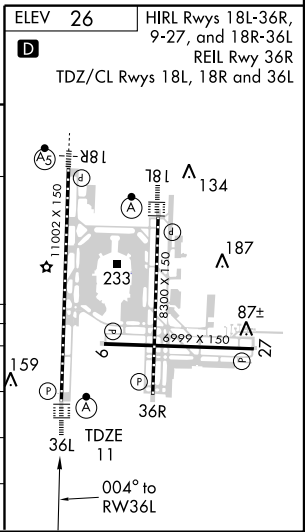
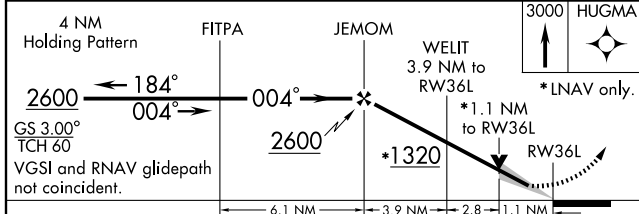
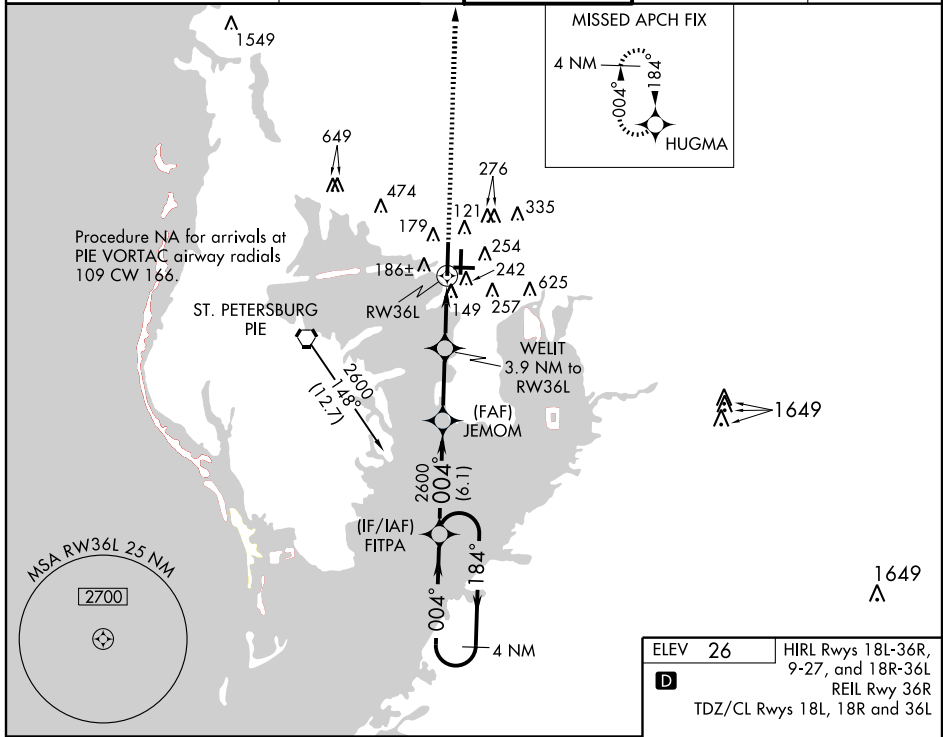
TAMPA INTL (TPA)

WAAS CH 50406 W36A	APP CRS 004°	Rwy Idg 10800 TDZE 11 Apt Elev 26
--	------------------------	--

▼ For uncompensated Baro-VNAV systems, LNAV/VNAV NA below -15°C (5°F) or above 49°C (120°F). For inoperative ALSF, increase LPV all Cats visibility to RVR 4000, increase LNAV/VNAV Cat. E visibility to 1¾ mile, and increase LNAV Cat. D visibility to RVR 6000 and Cat. E to 1½ mile. DME/DME RNP-0.3 NA.

ALSF-2
MISSED APPROACH:
Climb to 3000 direct HUGMA and hold.

ARR 126.45	ATIS 128.475	TAMPA APP CON 118.5 290.3	TAMPA TOWER 119.5 269.4	GND CON 121.7 269.4	CLNC DEL 133.6
----------------------	------------------------	-------------------------------------	-----------------------------------	-------------------------------	--------------------------



CATEGORY	A	B	C	D	E
LPV DA	211/18 200 (200-½)				211/24 200 (200-½)
LNAV/VNAV DA	494/60 483 (500-1¼)				
LNAV MDA	420/24 409 (400-½)	420/40 409 (400-¾)	420/50 409 (400-1)		
CIRCLING	560-1 534 (600-1)	560-1½ 534 (600-1½)	580-2 554 (600-2)	940-3 914 (1000-3)	

TAMPA, FLORIDA
Amdt 1 09295

27° 59' N-82° 32' W

TAMPA INTL (TPA) RNAV (GPS) RWY 36L

SE-3, 22 OCT 2009 to 19 NOV 2009

SE-3, 22 OCT 2009 to 19 NOV 2009