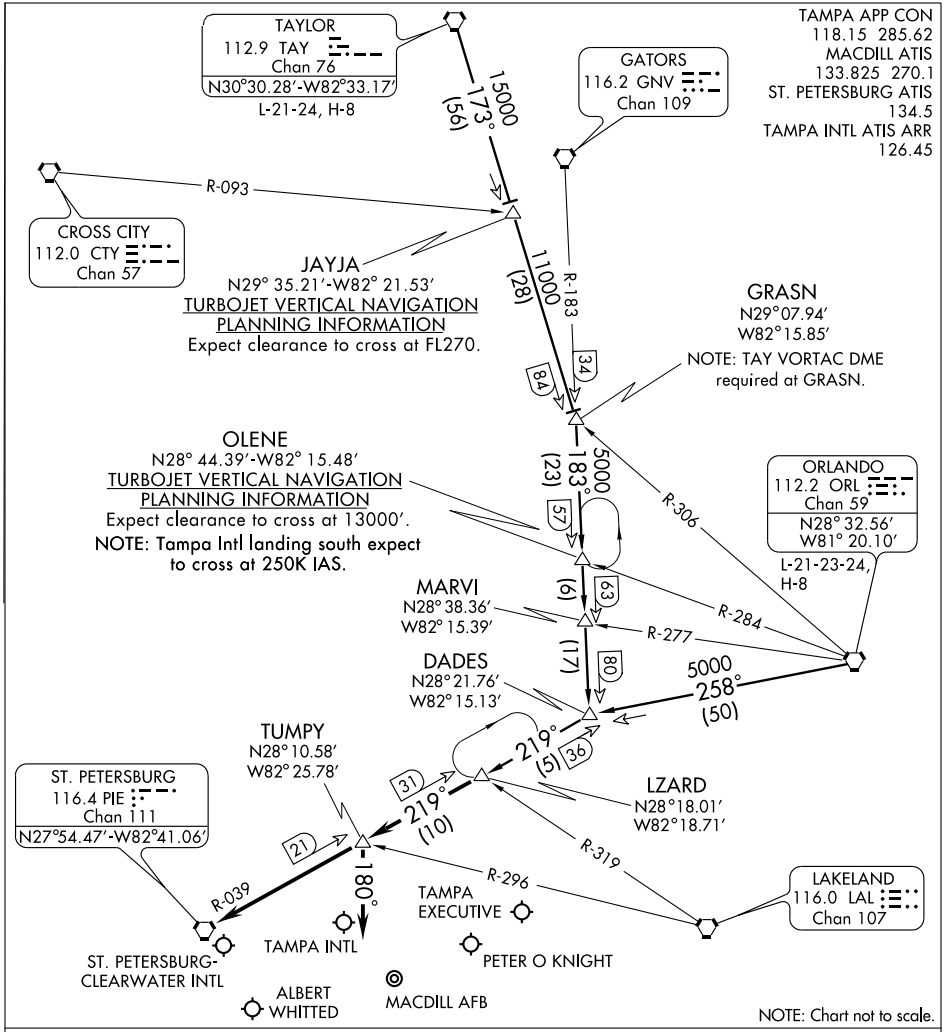


LZARD FOUR ARRIVAL (LZARD.LZARD4)

TAMPA, FLORIDA



SE-3, 22 OCT 2009 to 19 NOV 2009

SE-3, 22 OCT 2009 to 19 NOV 2009

ORLANDO TRANSITION (ORL.LZARD4): From over ORL VORTAC via ORL R-258 to DADES INT, then via PIE R-039 to LZARD INT. Thence. . .

TAYLOR TRANSITION (TAY.LZARD4): From over TAY VORTAC via TAY R-173 to GRASN INT, then via GNV R-183 to DADES INT, then via PIE R-039 to LZARD INT. Thence. . .

TAMPA INTL:
RWY 18:via PIE R-039 to PIE VORTAC. Expect radar vectors to final approach after LZARD INT.
RWY 36:via PIE R-039 to TUMPY INT. Depart TUMPY INT heading 180° for radar vectors to final approach course.

ALL OTHER AIRPORTS:via PIE R-039 to PIE VORTAC. Expect radar vectors to the airport after LZARD INT.

LZARD FOUR ARRIVAL (LZARD.LZARD4)

TAMPA, FLORIDA