

# ILS or LOC RWY 36L

TAMPA INTL (TPA)

LOC I-AMP <b>108.9</b>	APP CRS <b>004°</b>	Rwy ldg <b>10800</b>
	TDZE <b>12</b>	
	Apt Elev <b>27</b>	

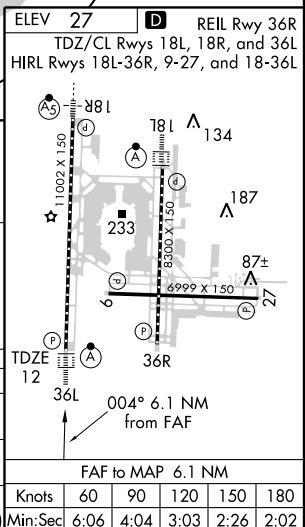
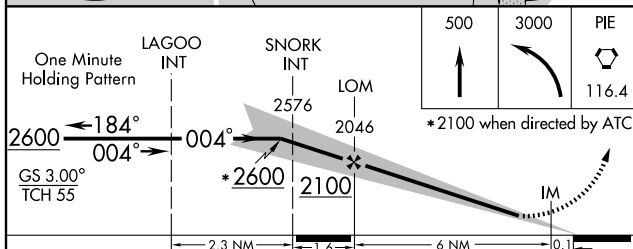
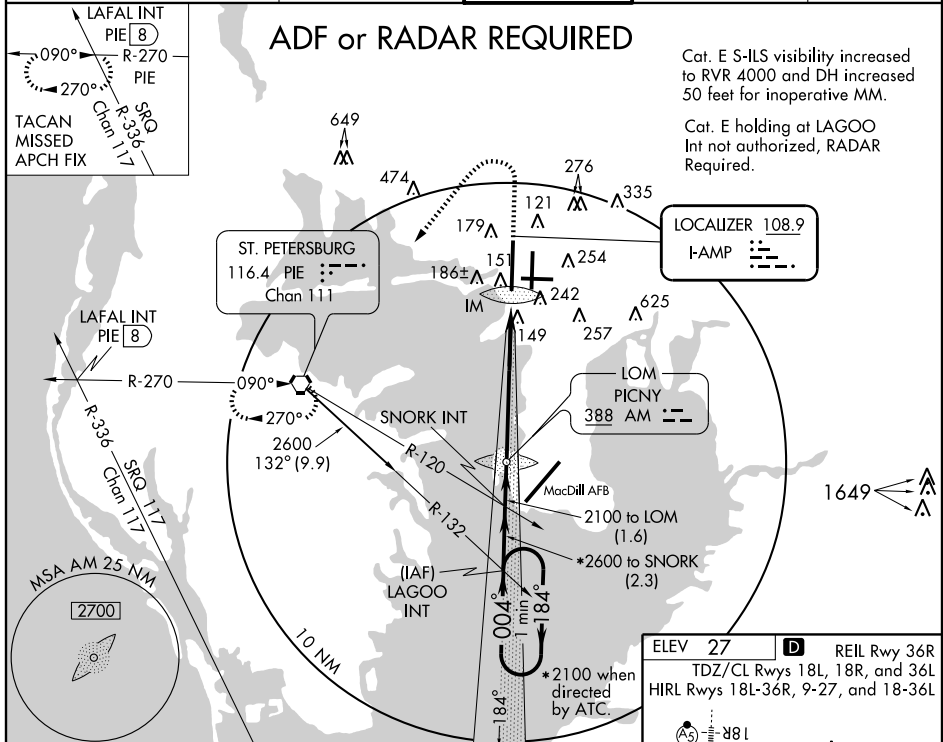
**▼** Cat. E S-ILS visibility increased to RVR 4000, and  
**▲** Cat. E S-LOC visibility increased to RVR 6000 for  
 inoperative ALSF-1.



**MISSED APPROACH:** Climb to 500 then climbing left turn to 3000 direct PIE VORTAC and hold. TACAN aircraft continue to 4000 direct PIE VORTAC then via PIE R-270 to LAFAL Int/8 DME SRQ R-336 and hold.

ARR <b>126.45</b>	ATIS <b>128.475</b>	DEP <b>128.475</b>	TAMPA APP CON <b>118.5 290.3</b>	<b>TAMPA TOWER</b> <b>119.5 269.4</b>	GND CON <b>121.7 269.4</b>	CLNC DEL <b>133.6</b>
----------------------	------------------------	-----------------------	-------------------------------------	--	-------------------------------	--------------------------

## ADF or RADAR REQUIRED



CATEGORY	A	B	C	D	E
S-ILS 36L	212/18 200 (200-½)				212/24 200 (200-½)
S-LOC 36L	440/24	428 (500-½)	440/40 428 (500-¾)	440/50	428 (500-1)
CIRCLING	560-1	533 (600-1)	560-1½ 533 (600-1½)	580-2 533 (600-2)	940-3 913 (1000-3)

SE-3, 22 OCT 2009 to 19 NOV 2009