

ILS or LOC RWY 18R

TAMPA INTL (TPA)

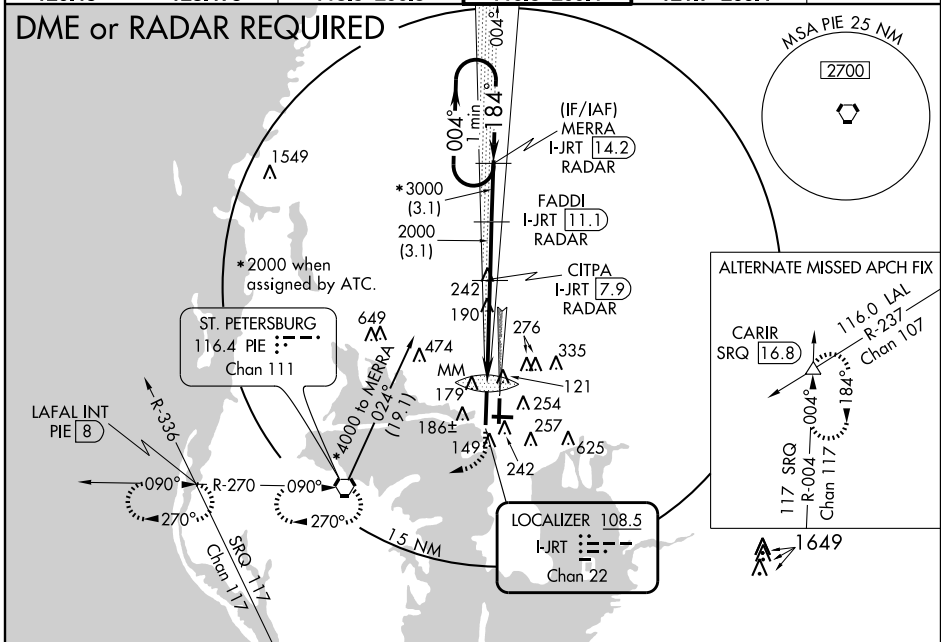
LOC/DME I-JRT 108.5 Chan 22	APP CRS 184°	Rwy Idg 11002 TDZE 21 Apt Elev 26
---	------------------------	--

⚠ For inoperative MALSR, increase S-ILS 18R all Cats visibility to RVR 4000 and S-LOC 18R Cat. E visibility to 1½ mile. Simultaneous approach authorized with Rwy 18L. LOC procedure NA during simultaneous operations.

MALSR
AS

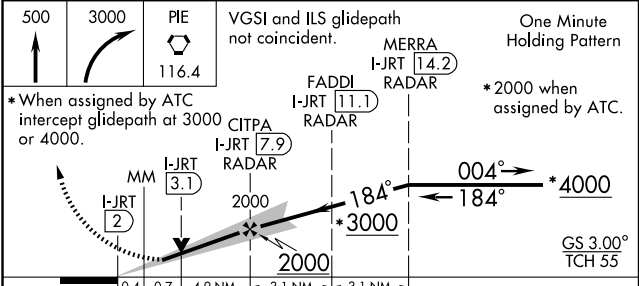
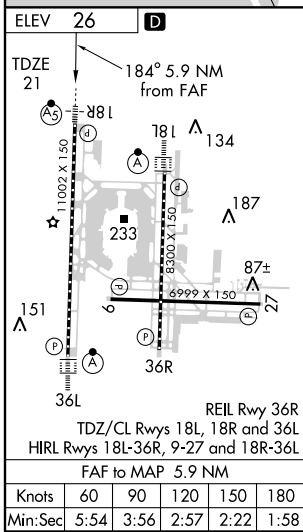
MISSED APPROACH: Climb to 500 then climbing right turn to 3000 direct PIE VORTAC and hold, continue climb-in-hold to 3000 (TACAN aircraft climb to 500 then climbing right turn to 4000 direct PIE VORTAC then via PIE VORTAC R-270 to LAFAL INT/PIE 8 DME and hold W, RT, 090° inbound.)

ARR 126.45	ATIS	DEP 128.475	TAMPA APP CON 118.5 290.3	TAMPA TOWER 119.5 269.4	GND CON 121.7 269.4	CLNC DEL 133.6
-------------------	------	--------------------	----------------------------------	--------------------------------	----------------------------	-----------------------



SE-3, 22 OCT 2009 to 19 NOV 2009

SE-3, 22 OCT 2009 to 19 NOV 2009



CATEGORY	A	B	C	D	E
S-ILS 18R	221/18		200 (200-½)		221/24 200 (200-½)
S-LOC 18R	440/24	419 (500-½)	440/40	419 (500-¾)	440/50 419 (500-1)
CIRCLING	560-1	534 (600-1)	560-1½ 534 (600-1½)	580-2 554 (600-2)	940-3 914 (1000-3)