

ILS RWY 36L (CAT III)

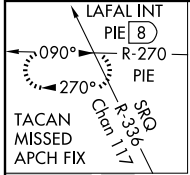
TAMPA INTL (TPA)

LOC I-AMP 108.9	APP CRS 004°	Rwy ldg 10800
		TDZE 12
		Apt Elev 27

⚠ Cat. E S-ILS visibility increased to RVR 4000, and Cat. E S-LOC visibility increased to RVR 6000 for inoperative ALSF-1.

ALSF-2 MISSED APPROACH: Climb to 500 then climbing left turn to 3000 direct PIE VORTAC and hold. TACAN aircraft continue to 4000 direct PIE VORTAC then via PIE R-270 to LAFAL Int/8 DME SRQ R-336 and hold.

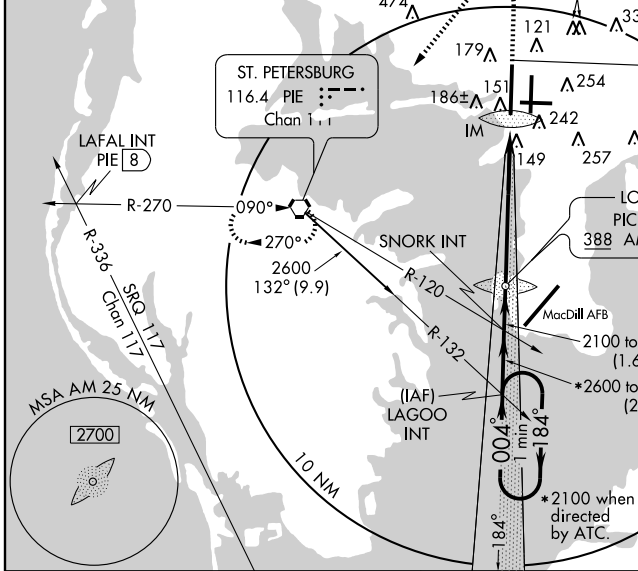
ARR 126.45	ATIS 128.475	DEP 128.475	TAMPA APP CON 118.5 290.3	TAMPA TOWER 119.5 269.4	GND CON 121.7 269.4	CLNC DEL 133.6
----------------------	------------------------	-----------------------	-------------------------------------	--	-------------------------------	--------------------------



ADF or RADAR REQUIRED

Cat. E S-ILS visibility increased to RVR 4000 and DH increased 50 feet for inoperative MM.

Cat. E holding at LAGOO Int not authorized, RADAR Required.

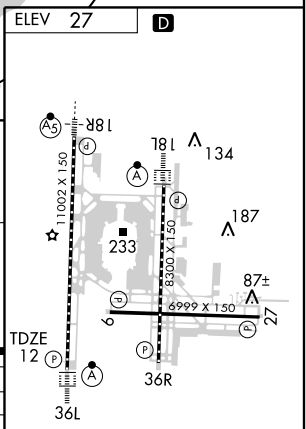
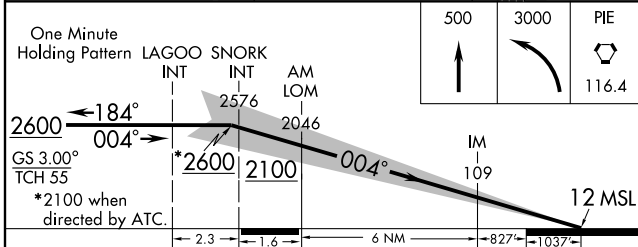


LOCALIZER 108.9
I-AMP

LOM
PICNY
388 AM

SE-3, 22 OCT 2009 to 19 NOV 2009

SE-3, 22 OCT 2009 to 19 NOV 2009



CATEGORY	A	B	C	D
S-ILS 36L		CAT IIIA RVR 07		
S-ILS 36L		CAT IIIB RVR 06		

CATEGORY III ILS - SPECIAL AIRCREW & AIRCRAFT CERTIFICATION REQUIRED

REIL Rwy 36R
TDZ/CL Rws 18L, 18R and 36L
HIRL Rws 18L-36R, 9-27 and 18R-36L