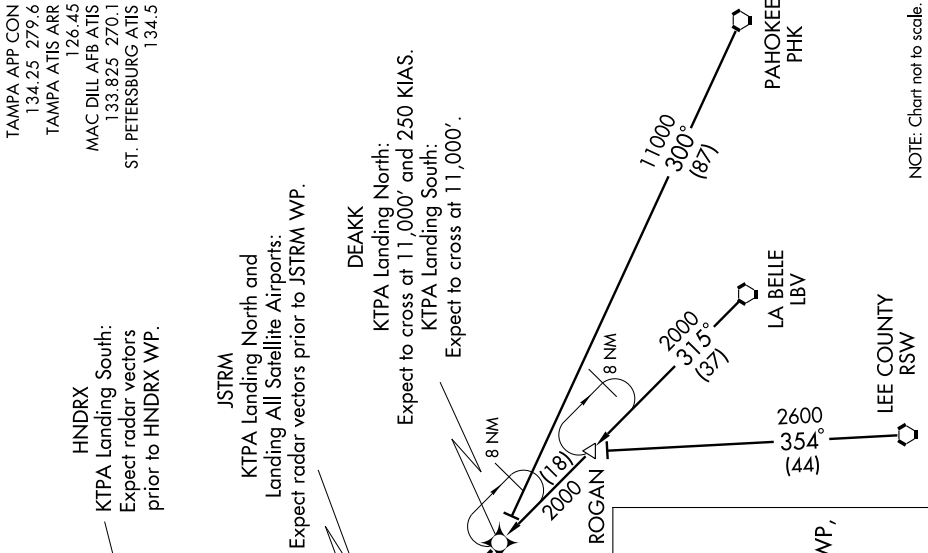


# DEAKK ONE ARRIVAL (RNAV)

TAMPA, FLORIDA

SE-3, 22 OCT 2009 to 19 NOV 2009



NOTE: Chart not to scale.

NOTE: RNAV 1.  
NOTE: Radar Required.  
NOTE: DME/DME/IRU or GPS Required.  
NOTE: Turbojet/Turboprop aircraft only.  
NOTE: Primary landing runways 36L/R, 18L/R.  
NOTE: For non-GPS equipped aircraft:  
PHK Transition: LBV, PHK, SRQ, and LAL must be operational.  
RSW and LBV Transitions: LBV, RSW, SRQ, and LAL must be operational.

**LA BELLE TRANSITION (LBV, DEAKK1):**  
**LEE COUNTY TRANSITION (RSW, DEAKK1):**  
**PAHOKEE TRANSITION (PHK, DEAKK1):**

From DEAKK WP via 315° track to JSTRM WP, thence as depicted to COBEN WP, then via 242° heading. Expect radar vectors.

**LOST COMMUNICATIONS:**  
KTPA Landing North: Continue track to JSTRM WP, proceed direct LAGOO WP, then intercept the Runway 36L final approach course, conduct approach.  
KTPA Landing South: Continue track to COBEN WP, then turn left to intercept the Runway 18L final approach course, conduct approach.

SE-3, 22 OCT 2009 to 19 NOV 2009

# DEAKK ONE ARRIVAL (RNAV)

TAMPA, FLORIDA