

(DADES.DADES1) 09183

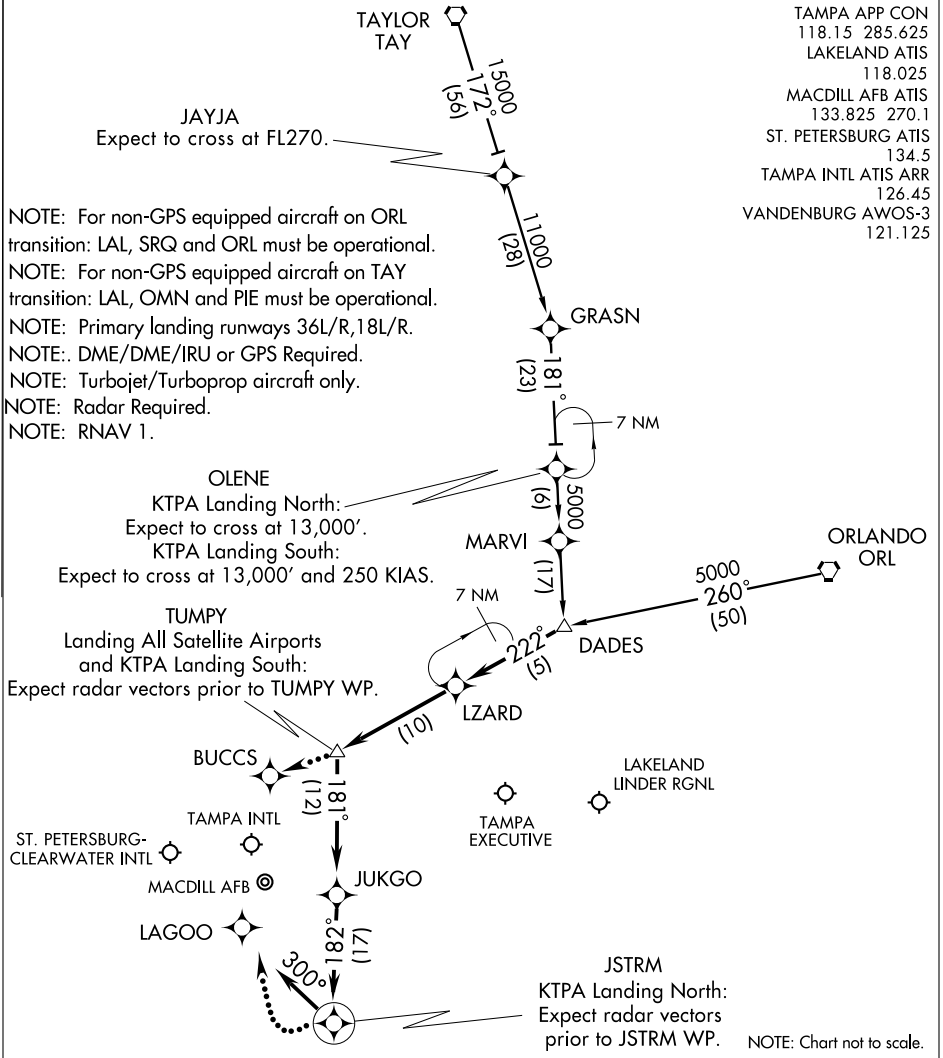
ST-416 (FAA)

DADES ONE ARRIVAL (RNAV)

TAMPA, FLORIDA

TAMPA APP CON
118.15 285.625
LAKELAND ATIS
118.025
MACDILL AFB ATIS
133.825 270.1
ST. PETERSBURG ATIS
134.5
TAMPA INTL ATIS ARR
126.45
VANDENBURG AWOS-3
121.125

NOTE: For non-GPS equipped aircraft on ORL transition: LAL, SRQ and ORL must be operational.
NOTE: For non-GPS equipped aircraft on TAY transition: LAL, OMN and PIE must be operational.
NOTE: Primary landing runways 36L/R, 18L/R.
NOTE: DME/DME/IRU or GPS Required.
NOTE: Turbojet/Turboprop aircraft only.
NOTE: Radar Required.
NOTE: RNAV 1.



SE-3, 22 OCT 2009 to 19 NOV 2009

SE-3, 22 OCT 2009 to 19 NOV 2009

NOTE: Chart not to scale.

ORLANDO TRANSITION (ORL.DADES1):

TAYLOR TRANSITION (TAY.DADES1):

From DADES WP via 222° track to LZARD WP, thence as depicted to JSTRM WP, then via 300° heading. Expect radar vectors.

LOST COMMUNICATIONS:

KTPA Landing North: Continue track to JSTRM WP, then turn right to intercept the Runway 36L final approach course, conduct approach.

KTPA Landing South: Continue track to TUMPY WP, proceed direct BUCCS WP, then intercept the Runway 18L final approach course, conduct approach.

DADES ONE ARRIVAL (RNAV)

TAMPA, FLORIDA

(DADES.DADES1) 09183