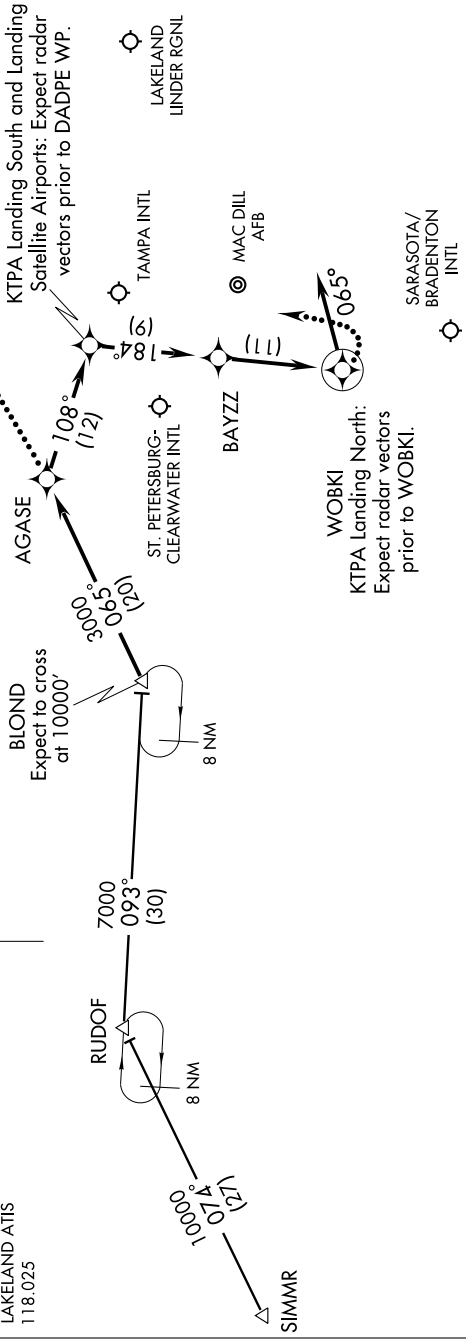


BLOND ONE ARRIVAL (RNAV)

TAMPA, FLORIDA

SE-3, 22 OCT 2009 to 19 NOV 2009

- TAMPA APP CON
132.52 269.1
- TAMPA INTL ATIS ARR
126.45
- ST. PETERSBURG ATIS
134.5
- SARASOTA ATIS
134.15
- MAC DILL AFB ATIS
133.825 270.1
- LAKELAND ATIS
118.025



SIMMR TRANSITION (SIMMR.BLOND1):

From over BLOND WP via 065° track to AGASE WP, thence as depicted to WOBKI WP, then via 065° heading. Expect radar vectors.

LOST COMMUNICATIONS:

KTPA Landing North: Continue track to WOBKI WP, then turn left to intercept the Runway 36L final approach course, conduct approach.
 KTPA Landing South: Continue track to AGASE WP, then proceed direct HUGMA WP, conduct RNAV (GPS) Rwy 18R approach.

- NOTE: For non-GPS equipped aircraft, PIE must be operational.
- NOTE: Primary landing runways 36L/R, 18L/R.
- NOTE: DME/DME/IRU or GPS Required.
- NOTE: Turbojet/Turboprop aircraft only.
- NOTE: Radar Required.
- NOTE: RNAV 1.
- NOTE: Chart not to scale.