

# OLYMPIC-THREE DEPARTURE

SL-414 [USAF]

MC CHORD AFB (KTCM)

TACOMA, WASHINGTON

ATIS  
 109.6 270.1  
 GND CON  
 118.175 279.65  
 MC CHORD TOWER  
 124.8 259.3  
 SEATTLE DEP CON  
 126.5 391.9

If unable to make published  
 climb gradient advise ATC  
 prior to departure.

Rwy	Knots	60	120	180	240
16 (A)	V/V(fpm)	320	640	960	1280
34 (B)	V/V(fpm)	650	1300	1950	2600

ATC Climb Rate

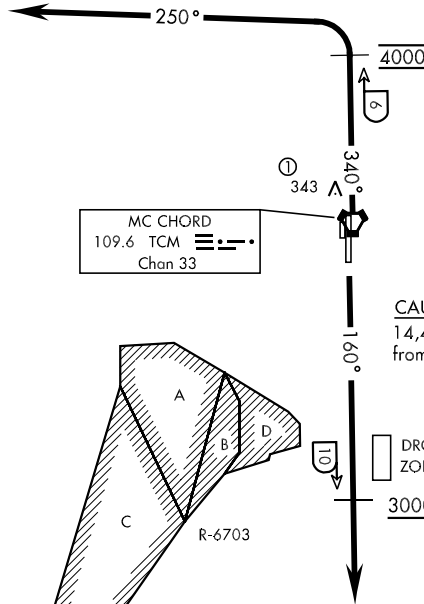
- (A) To 10 DME
- (B) To 6 DME

## RADAR REQUIRED

Maximum 250 KIAS

SEATTLE  
 116.8 SEA  
 Chan 115

L-1



MC CHORD  
 109.6 TCM  
 Chan 33

OLYMPIA  
 113.4 OLM  
 Chan 81

L-1

CAUTION: Mountains to  
 14,411 ft 098° 34 NM  
 from Mc Chord.

DROP ZONE

3000

(A) 2270' from Rwy 34

### DEPARTURE ROUTE DESCRIPTION

TAKE-OFF RWY 16: Climb on a track of 160°. Cross TCM VORTAC 10 DME at or above 3000. Maintain (assigned altitude). Expect radar vectors within TCM 8 DME after departure.

TAKE-OFF RWY 34: Climb on a track of 340° to TCM VORTAC 6 DME. Cross TCM 6 DME at 4000. Then turn left tracking 250°. Maintain (assigned altitude). Expect radar vectors.