

LOC I-TCM 108.5	APCH CRS 340°	Rwy Idg 10,108 TDZE 322 Arpt Elev 322
---------------------------	-------------------------	--

AL-414 [USAF]

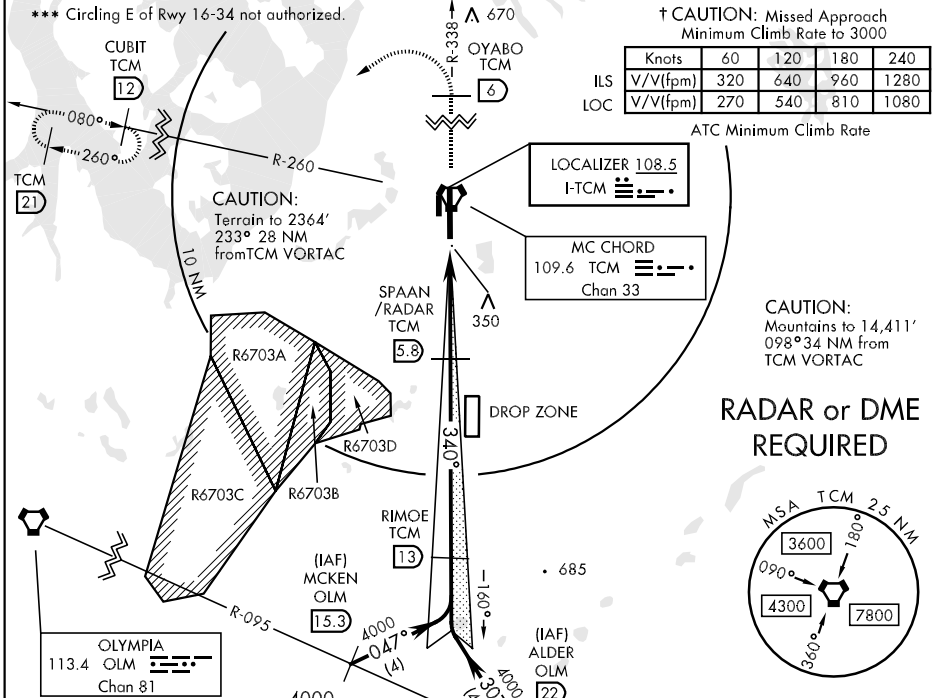
MC CHORD AFB (KTCM)

▼ * When ALS inop, increase vis $\frac{3}{4}$ mile, RVR to 40.
 ** When ALS inop, increase CAT AB vis to 1 mile, RVR to 50, CAT C vis to 1½ miles, CAT D vis to 1¾ miles.



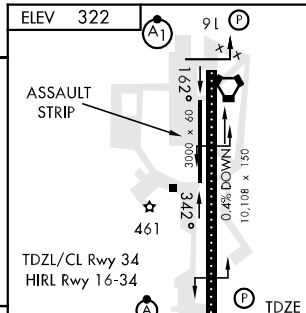
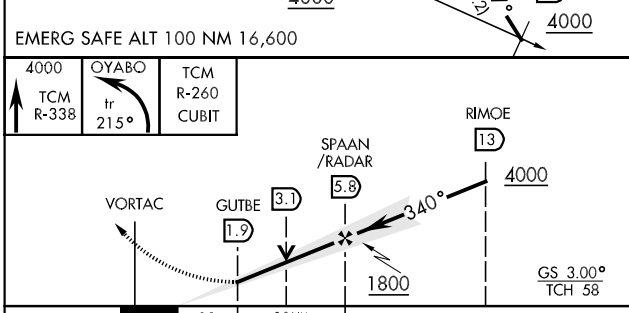
† MISSED APPROACH: Climb to 4000 on TCM VORTAC R-338 to OYABO, then turn left via 215° course to intercept TCM R-260 to CUBIT and hold, continue climb in hold to 4000. Cross OYABO at or above 3000.

ATIS 109.6 270.1	SEATTLE APP CON 126.5 391.9	MC CHORD TOWER 124.8 259.3	GND CON 118.175 279.65
----------------------------	---------------------------------------	--------------------------------------	----------------------------------



NW-1, 22 OCT 2009 to 19 NOV 2009

NW-1, 22 OCT 2009 to 19 NOV 2009



CATEGORY	A	B	C	D
S-ILS 34 *	522/18	200 (200-½)	522/24	200 (200-½)
S-LOC 34 **	900/24	578 (600-½)	900/50	900/60
			578 (600-1)	578 (600-1½)
CIRCLING ***	940-1	618 (700-1)	940-1¾	940-2
			618 (700-1¾)	618 (700-2)

FAF to MAP 3.9 NM					
Knots	60	90	120	150	180
Min:Sec	3:54	2:36	1:57	1:34	1:18