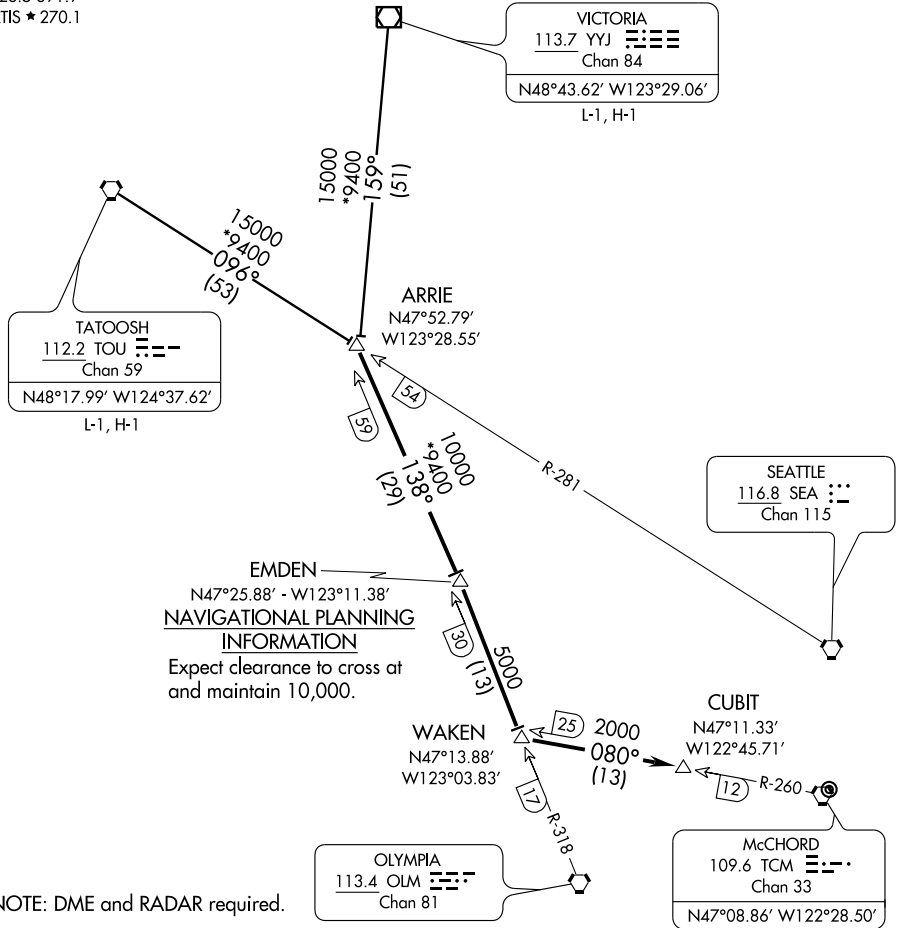


ARRIE FIVE ARRIVAL

ST-414 (FAA)

McCHORD AFB
TACOMA, WASHINGTON

SEATTLE APP CON
126.5 391.9
ATIS ★ 270.1



EMDEN
N47°25.88' - W123°11.38'
NAVIGATIONAL PLANNING INFORMATION
Expect clearance to cross at and maintain 10,000.

NOTE: DME and RADAR required.

NOTE: Chart not to scale.

TATOOSH TRANSITION (TOU.ARRIE5): From over TOU VORTAC via TOU R-096 to ARRIE DME Fix. Thence. . . .

VICTORIA TRANSITION (YYJ.ARRIE5): From over YYJ VOR/DME via YYJ R-159 to ARRIE DME Fix. Thence. . . .

. . . .From over ARRIE DME Fix via OLM R-318 and TCM R-260 to CUBIT INT.
Expect radar vectors to final approach course.

LOST COMMUNICATIONS: Proceed direct to TCM VORTAC.

ARRIE FIVE ARRIVAL

NW-1, 22 OCT 2009 to 19 NOV 2009

NW-1, 22 OCT 2009 to 19 NOV 2009