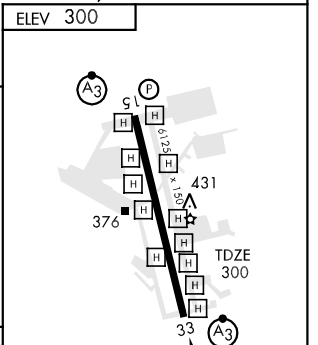
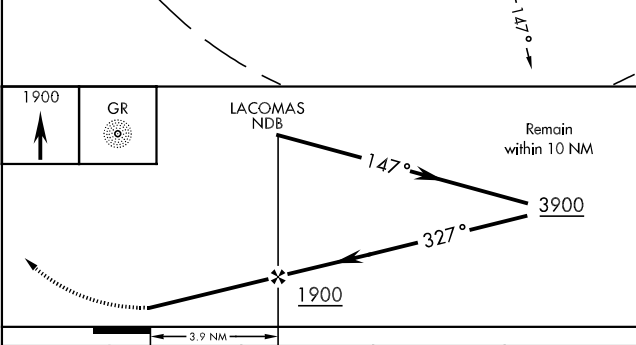
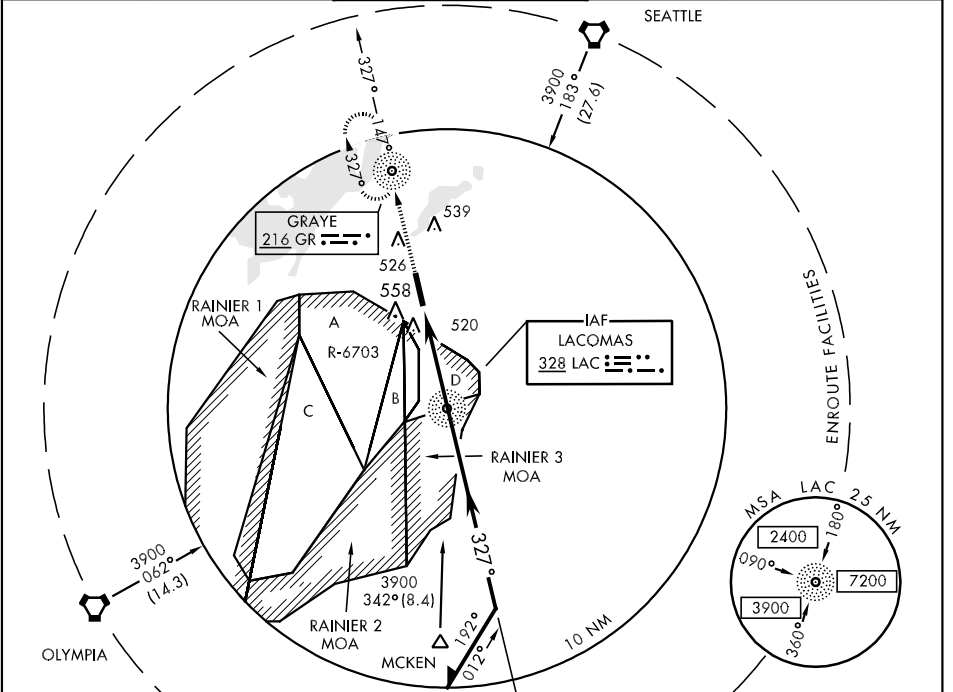


NDB LAC 328	APCH CRS 327°	Rwy Idg TDZE Arpt Elev 6125 300 300	AL-413 [USA]	GRAY AAF (KGRF)
-----------------------	-------------------------	---	--------------	-----------------

▼ If local altimeter setting not received, use McChord AFB altimeter setting and increase all MDAs 20 feet.
 ▲ * Circling not authorized W of Rwy 15-33.

SSALR MISSED APPROACH: Climb to 1900 direct to GR LOM and hold.

ATIS 124.65 306.2	SEATTLE APP CON 120.1 290.9	GRAY TOWER ★ 119.325 (CTAF) 256.8	GND CON 121.9 290.2	CLNC DEL 121.9 290.2	PAR
-----------------------------	---------------------------------------	---	-------------------------------	--------------------------------	-----



CATEGORY	A	B	C	D	HIRL Rwy 15-33	FAF to MAP 3.9 NM				
S-33	860-¾	560 (600-¾)	860-1¼ 560 (600-1¼)	NOT AUTHORIZED		Knots	60	90	120	150
CIRCLING *	860-1	560 (600-1)	860-1½ 560 (600-1½)	860-2 560 (600-2)	Min:Sec	3:54	2:36	1:57	1:34	1:18
S-PAR 33	500-¾		200 (200-¾)	GS 3.0°						

NW-1, 22 OCT 2009 to 19 NOV 2009

NW-1, 22 OCT 2009 to 19 NOV 2009