

FORT LEWIS, WASHINGTON

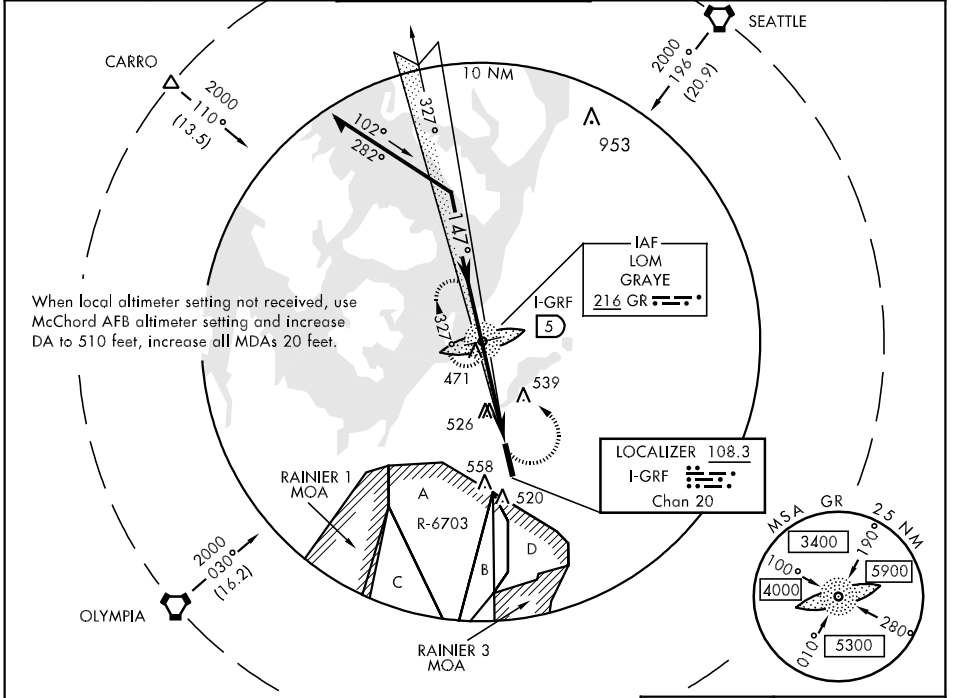
ILS or LOC RWY 15

LOC I-GRF 108.3 Chan 20	APCH CRS 147°	Rwy Idg TDZE Arpt Elev 6125 294 300	AL-413 [USA]	GRAY AAF (KGRF)
---	-------------------------	---	--------------	-----------------

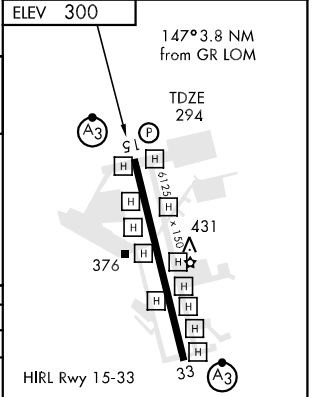
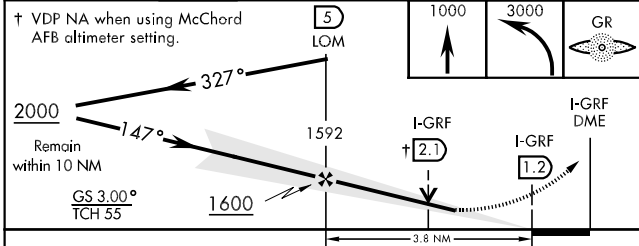
▼ * When ALS inop, increase CAT AB vis by ¼ mile.
** When ALS inop, increase CAT D vis by ¼ mile.
▲ *** Circling not authorized W of Rwy 15-33.

ⓐ SSALR MISSED APPROACH: Climb to 1000, then climbing left turn to 3000 direct GR LOM and hold, continue climb-in-hold to 3000.

ATIS 124.65 306.2	SEATTLE APP CON 120.1 290.9	GRAY TOWER ★ 119.325 (CTAF) 256.8	GND CON 121.9 290.2	CLNC DEL 121.9 290.2	PAR
-----------------------------	---------------------------------------	---	-------------------------------	--------------------------------	-----



ADF REQUIRED ENROUTE FACILITIES



CATEGORY	A	B	C	D
S-ILS 15 *	494/24	200 (200-½)	494/40	200 (200-¾)
S-LOC 15 **	660/40	366 (400-¾)		660/50 366 (400-1)
CIRCLING ***	780-1	480 (500-1)	780-1½ 480 (500-1½)	860-2 560 (600-2)
S-PAR 15	499/40	200 (200-¾)	GS 3.0°	

FAF to MAP 3.8 NM					
Knots	60	90	120	150	180
Min:Sec	3:48	2:32	1:54	1:31	1:16

FORT LEWIS, WASHINGTON 47°05'N-122°35'W GRAY AAF (KGRF)
 Amdt 5 08325

ILS or LOC RWY 15

NW-1, 22 OCT 2009 to 19 NOV 2009

NW-1, 22 OCT 2009 to 19 NOV 2009