

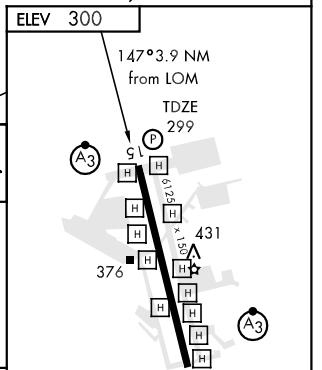
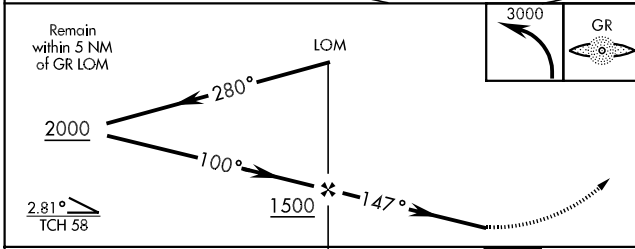
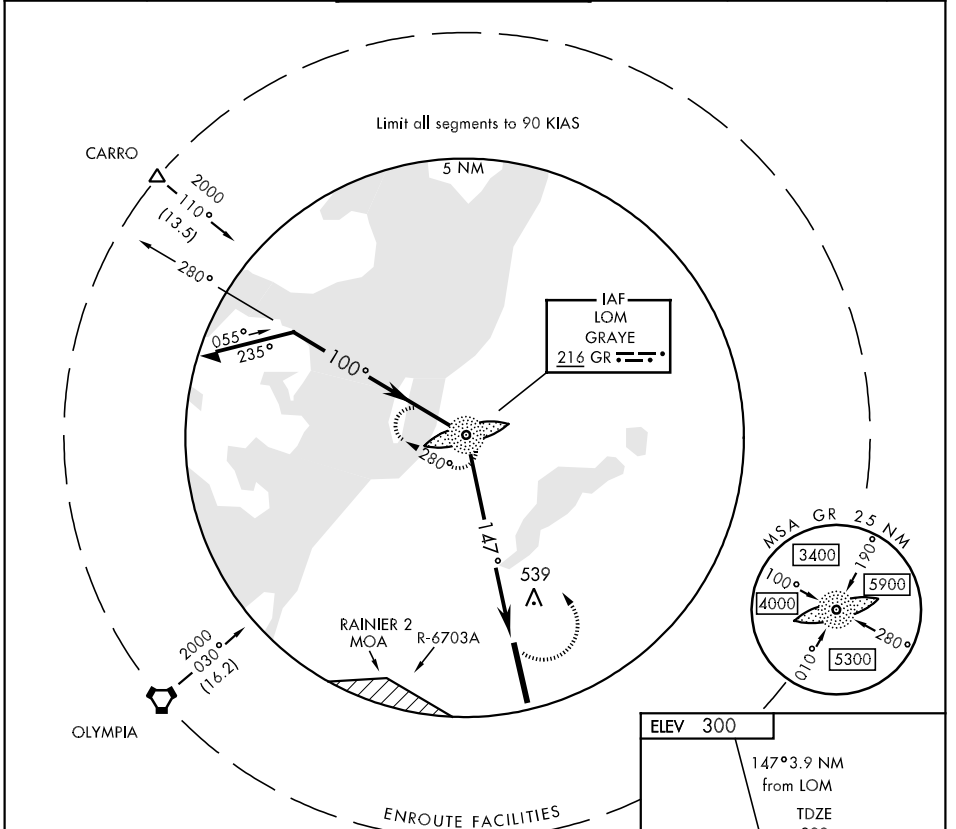
FORT LEWIS, WASHINGTON

# COPTER NDB RWY 15

LOM GR <b>216</b>	APCH CRS <b>147°</b>	Rwy ldg TDZE <b>6125</b> 299 Arpt Elev <b>300</b>	AL-413 [USA]	GRAY AAF (KGRF)
----------------------	-------------------------	---	--------------	-----------------

<b>▽ ▲</b>	SSALR <b>A3</b>	MISSED APPROACH: Climbing left turn to 3000 direct GR LOM and hold.
------------	--------------------	---

ATIS <b>124.65 306.2</b>	SEATTLE APP CON <b>120.1 290.9</b>	GRAY TOWER ★ <b>119.325 (CTAF) 256.8</b>	GND CON <b>121.9 290.2</b>	CLNC DEL <b>121.9 290.2</b>	PAR
-----------------------------	---------------------------------------	---	-------------------------------	--------------------------------	-----



CATEGORY	COPTER				FAF to MAP 3.9 NM					
H-15	840/24	541	(600-½)		Knots	45	60	75	90	105
S-PAR 15	499/40	200	(200-¾)	GS 3.0°	Min:Sec	5:12	3:54	3:08	2:36	2:14

FORT LEWIS, WASHINGTON  
Orig 08325

47°05'N-122°35'W

GRAY AAF (KGRF)

# COPTER NDB RWY 15

NW-1, 22 OCT 2009 to 19 NOV 2009

NW-1, 22 OCT 2009 to 19 NOV 2009