

SYRACUSE, NEW YORK

AL-411 (FAA)

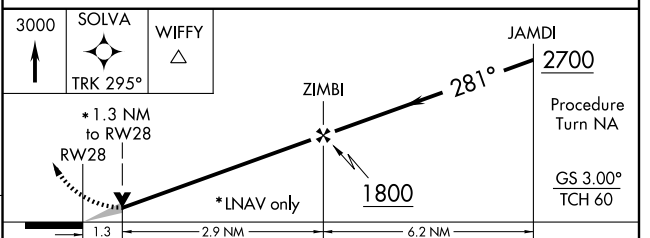
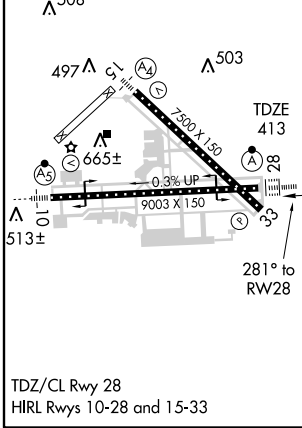
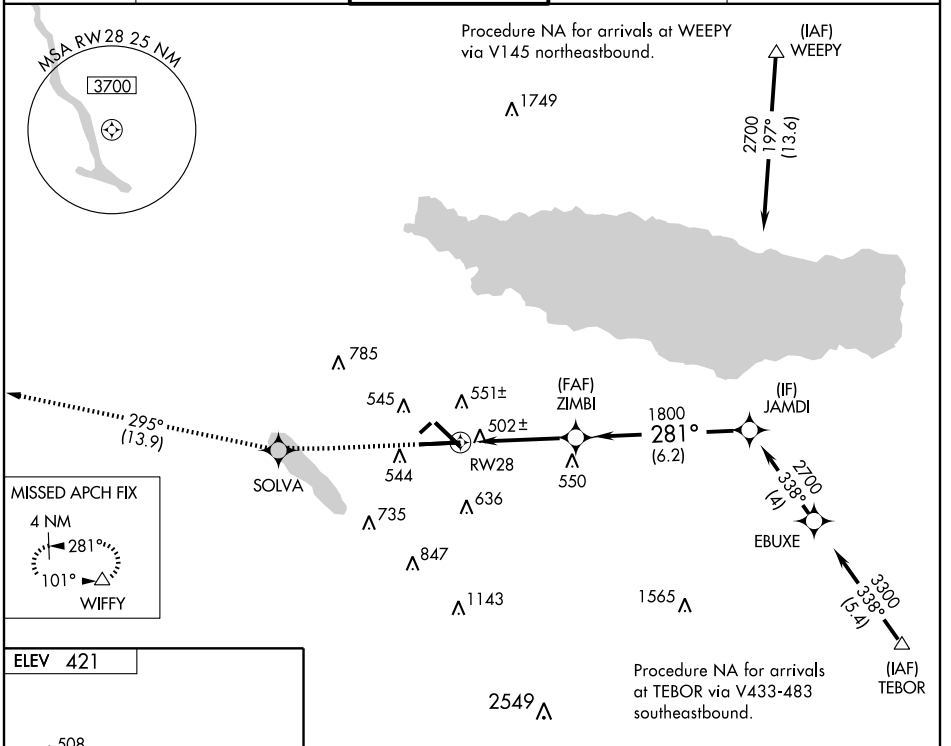
RNAV (GPS) RWY 28

SYRACUSE HANCOCK INTL (SYR)

WAAS CH 45517 W28A	APP CRS 281°	Rwy Idg TDZE Apt Elev	9003 413 421
--	------------------------	-----------------------------	---

	Baro-VNAV NA below -15°C (5°F). DME/DME RNP-0.3 NA. For inoperative ALSF, increase LPV visibility all Cats to RVR 6000.	MISSED APPROACH: Climb to 3000 direct SOLVA and via 295° track to WIFFY and hold.

ATIS 124.225	SYRACUSE APP CON 134.275 279.6	SYRACUSE TOWER 120.3 239.0	GND CON 121.7 348.6	CLNC DEL 125.05 257.775
------------------------	--	--------------------------------------	-------------------------------	-----------------------------------



CATEGORY	A	B	C	D
LPV DA	740/40 327 (400-¾)			
LNAV/VNAV DA	775/40 362 (400-¾)			
LNAV MDA	860/24	447 (500-½)	860/40 447 (500-¾)	860/50 447 (500-1)
CIRCLING	880-1¼	459 (500-1¼)	900-1½ 479 (500-1½)	980-2 559 (600-2)

SYRACUSE, NEW YORK
Amdt 1 08045

43°07'N - 76°06'W

SYRACUSE HANCOCK INTL (SYR)

RNAV (GPS) RWY 28

NE-2, 22 OCT 2009 to 19 NOV 2009

NE-2, 22 OCT 2009 to 19 NOV 2009