

# RNAV (GPS) RWY 15

SYRACUSE HANCOCK INTL (SYR)

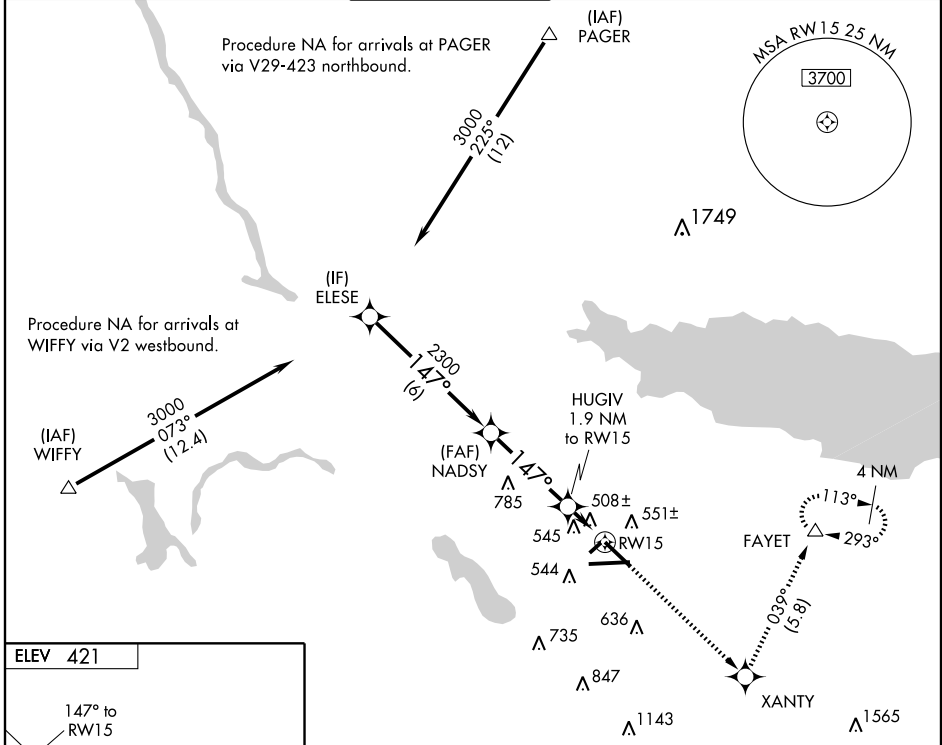
WAAS CH <b>50117</b> <b>W15A</b>	APP CRS <b>147°</b>	Rwy ldg TDZE Apt Elev	<b>7500</b> <b>417</b> <b>421</b>
--	------------------------	-----------------------------	---

**▼** Baro-VNAV NA below -15°C (5°F). DME/DME RNP-0.3 NA. Inoperative table does not apply to LPV, LNAV/VNAV and LNAV Cat C.



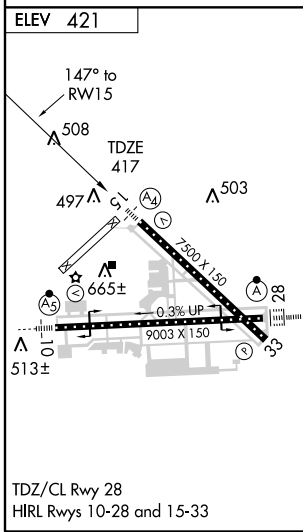
**MISSED APPROACH:** Climb to 3000 direct XANTY and left turn via 039° track to FAYET and hold.

ATIS <b>124.225</b>	SYRACUSE APP CON <b>134.275 279.6</b>	SYRACUSE TOWER <b>120.3 239.0</b>	GND CON <b>121.7 348.6</b>	CLNC DEL <b>125.05 257.775</b>
------------------------	--	--------------------------------------	-------------------------------	-----------------------------------



NE-2, 22 OCT 2009 to 19 NOV 2009

NE-2, 22 OCT 2009 to 19 NOV 2009



ELESE	3000	XANTY	FAYET	
Procedure Turn NA	↑	✧	△	
GS 3.00°	3000	TRK 039°		
TCH 53	2300			
	1060			
	6 NM	3.8 NM	1.9 NM	
CATEGORY	A	B	C	D
LPV DA		735-1	318 (400-1)	
LNAV/VNAV DA		825-1½	408 (500-1½)	
LNAV MDA	900-¾	483 (500-¾)	900-1¼	900-1½
			483 (500-1¼)	483 (500-1½)
CIRCLING	900-1½	479 (500-1½)		980-2
				559 (600-2)