

LOC/DME I-SYR 109.9 Chan 36	APP CRS 280°	Rwy Idg TDZE Apt Elev	9003 413 421
---	------------------------	-----------------------------	---

ILS RWY 28

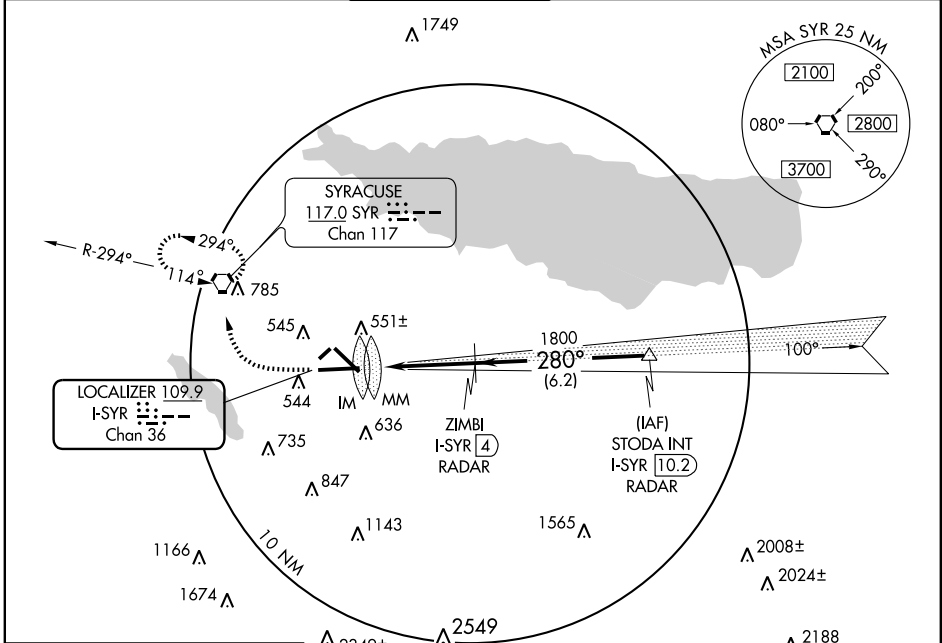
SYRACUSE HANCOCK INTL (SYR)

*** RADAR or DME REQUIRED**

ALSIF-2

MISSED APPROACH: Climb to 1100 then climbing right turn to 3000 direct SYR VORTAC and hold.

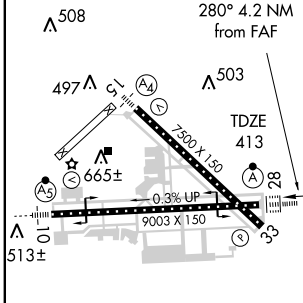
ATIS 124.225	SYRACUSE APP CON 134.275 279.6	SYRACUSE TOWER 120.3 239.0	GND CON 121.7 348.6	CLNC DEL 125.05 257.775
------------------------	--	--------------------------------------	-------------------------------	-----------------------------------



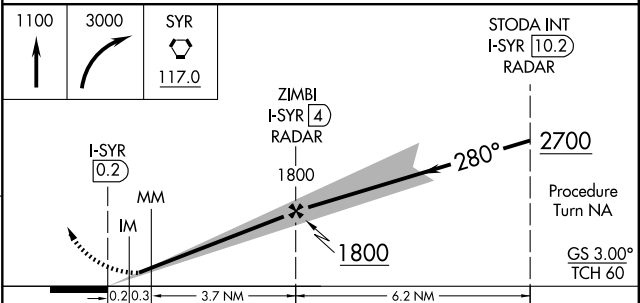
NE-2, 22 OCT 2009 to 19 NOV 2009

NE-2, 22 OCT 2009 to 19 NOV 2009

ELEV 421



TDZ/CL Rwy 28					
HIRL Rwys 10-28 and 15-33					
FAF to MAP 4.2 NM					
Knots	60	90	120	150	180
Min:Sec	4:12	2:48	2:06	1:41	1:24



CATEGORY	A	B	C	D
S-ILS 28	613/18 200 (200-½)			
S-LOC 28 *	800/24 387 (400-½)			800/40 387 (400-¾)
CIRCLING	880-1 459 (500-1)		900-1½ 479 (500-1½)	
			980-2 559 (600-2)	