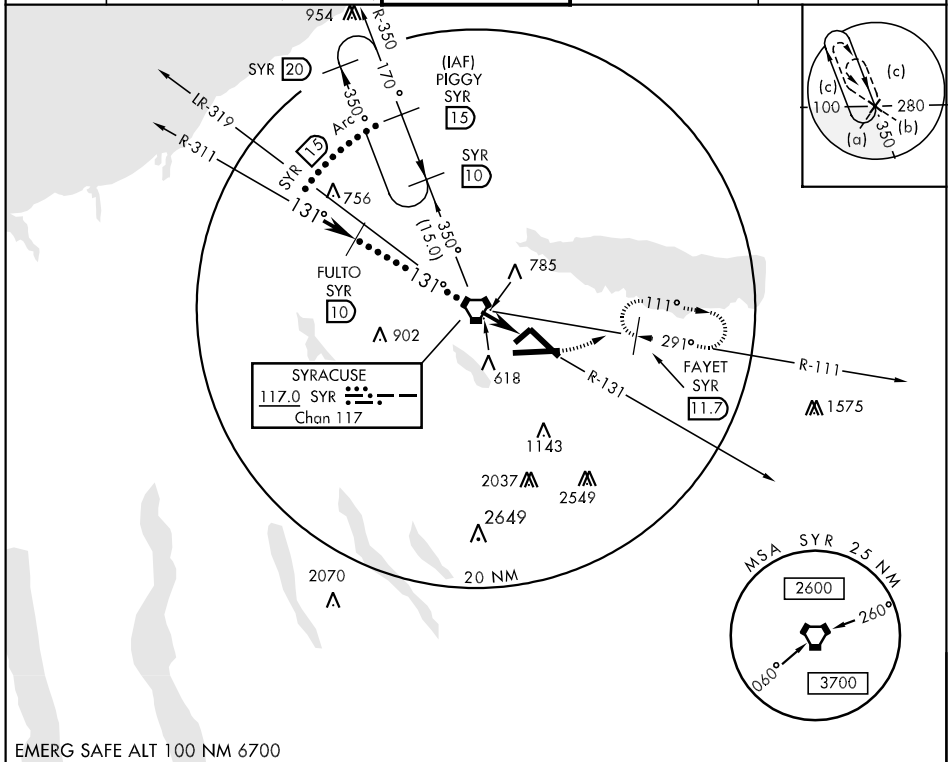


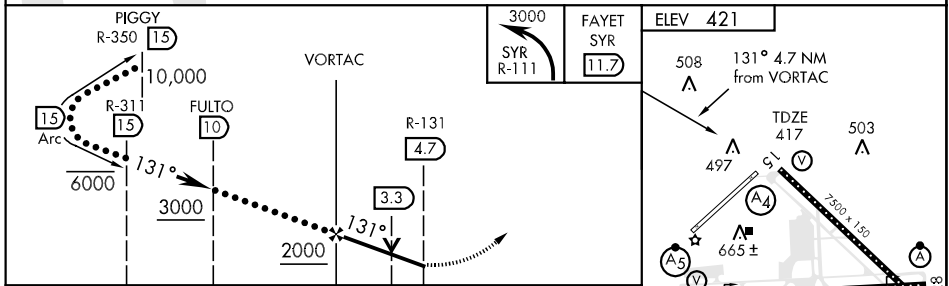
VORTAC SYR 117.0 Chan 117	APCH CRS 131°	Rwy Idg TDZE Arpt Elev 7500 417 421	JAL-411 [USAF]	SYRACUSE HANCOCK INTL (KSYR)
---	-------------------------	---	----------------	------------------------------

MISSED APPROACH: Climbing left turn to 3000 via SYR R-111 to FAYET/11.7 DME and hold.

ATIS 124.225	SYRACUSE APP CON 126.125 269.125 (100° - 278°) 134.275 279.6 (279° - 099°)	SYRACUSE TOWER 120.3 239.0	GND CON 121.7 348.6	CLNC DEL 125.05 257.775
------------------------	--	--------------------------------------	-------------------------------	-----------------------------------



EMERG SAFE ALT 100 NM 6700



CATEGORY	C	D	E
S-15	920-1½ 503	(500-1½)	920-1¾ 503 (500-1¾)
CIRCLING	980-1½ 559 (600-1½)	980-2 559 (600-2)	1200-2¾ 779 (800-2¾)

NE-2, 22 OCT 2009 to 19 NOV 2009

NE-2, 22 OCT 2009 to 19 NOV 2009