

TACAN SSC Chan 38	APCH CRS 040°	Rwy Idg TDZE Arpt Elev
		10,016 239 242

AL-409 [USAF]

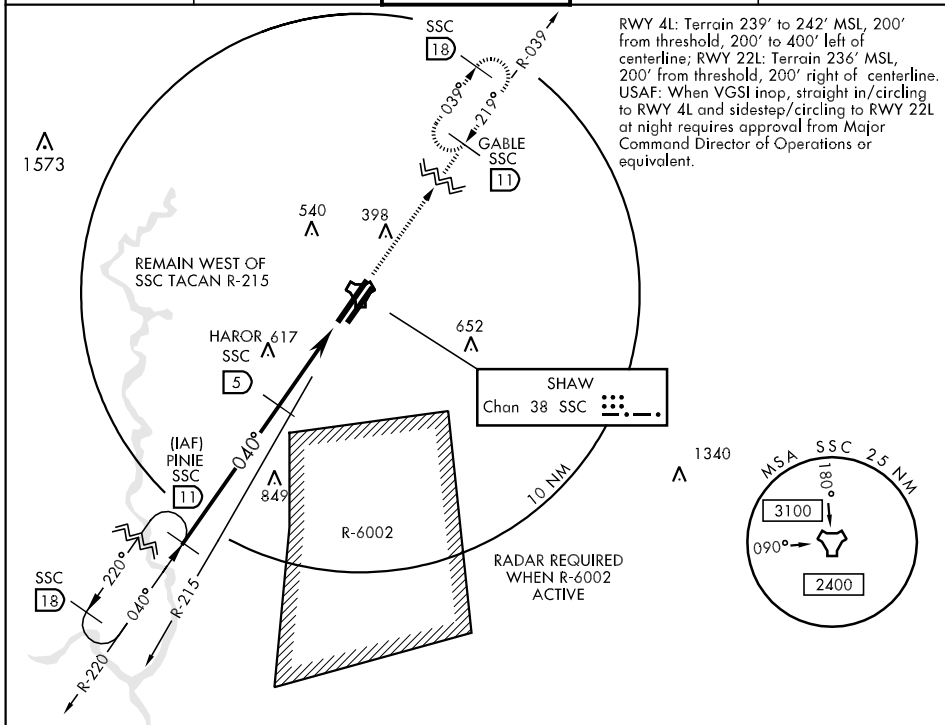
SHAW AFB (KSSC)

▼ * When ALS inop, increase CAT C vis to 1½ miles, CAT D vis to 1¾ miles, CAT E vis to 2 miles.



MISSED APPROACH: Climbing to 2000, intercept SSC TACAN R-039 to GABLE and hold.

ATIS 132.125 270.1	SHAW APP CON 125.4 285.4	SHAW TOWER 126.65 254.25	GND CON 126.1 275.8	CLNC DEL 121.8 289.4
------------------------------	------------------------------------	------------------------------------	-------------------------------	--------------------------------

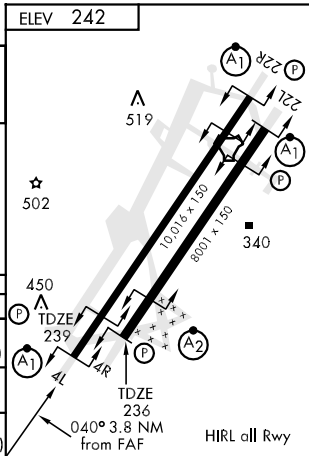
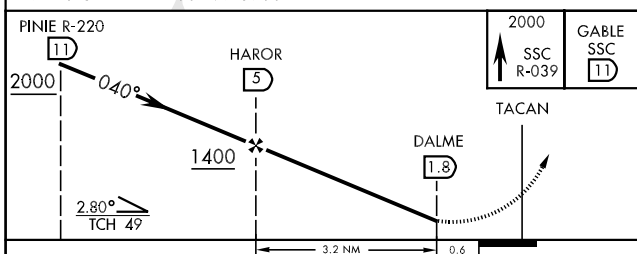


RWY 4L: Terrain 239' to 242' MSL, 200' from threshold, 200' to 400' left of centerline; RWY 22L: Terrain 236' MSL, 200' from threshold, 200' right of centerline. USAF: When VGSI inop, straight in/circling to RWY 4L and sidestep/circling to RWY 22L at night requires approval from Major Command Director of Operations or equivalent.

SE-2, 22 OCT 2009 to 19 NOV 2009

SE-2, 22 OCT 2009 to 19 NOV 2009

EMERG SAFE ALT 100 NM 3900



CATEGORY	A	B	C	D	E
S-4L *	800/50	561 (600-1)	800-1¼ 561 (600-1¼)	800-1½ 561 (600-1½)	800-1½ 561 (600-1½)
SIDESTEP * 4R	800/50 564 (600-1)	800/60 564 (600-1¼)	800-1½ 564 (600-1½)	800-1¾ 564 (600-1¾)	800-2¾ 564 (600-2¾)
CIRCLING	840-1 598 (600-1)	840-1½ 598 (600-1½)	880-2 638 (700-2)	1000-2¾ 758 (800-2¾)	