

TACAN SSC Chan 38	APCH CRS 219°	Rwy Idg TDZE 240 Arpt Elev 242
-----------------------------	-------------------------	--

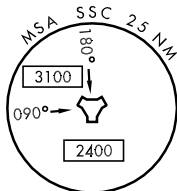
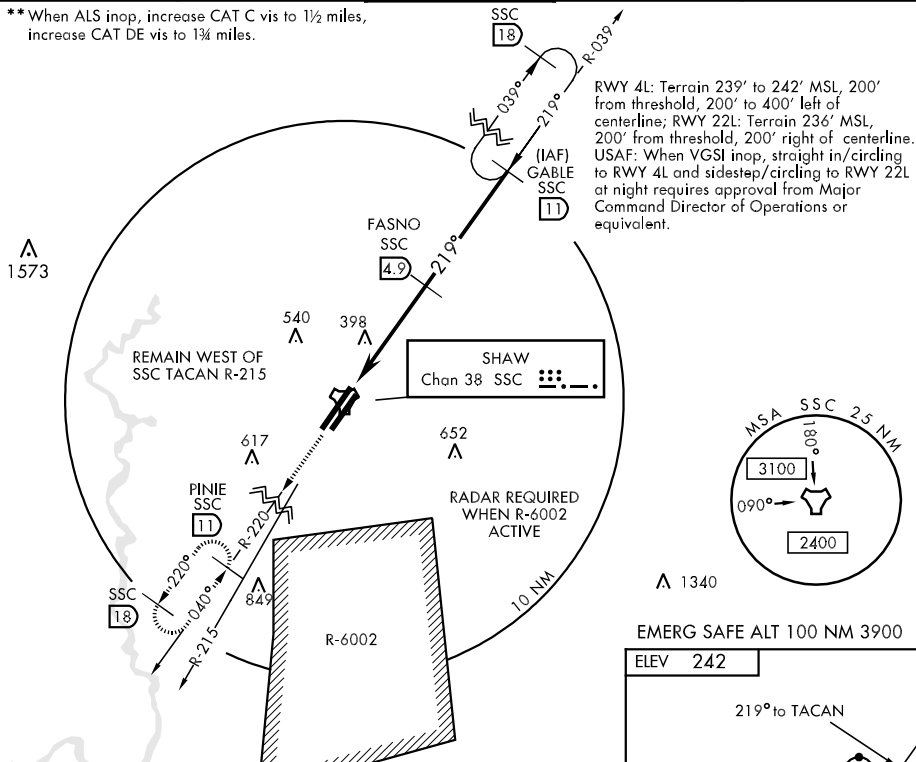
AL-409 [USAF]

SHAW AFB (KSSC)

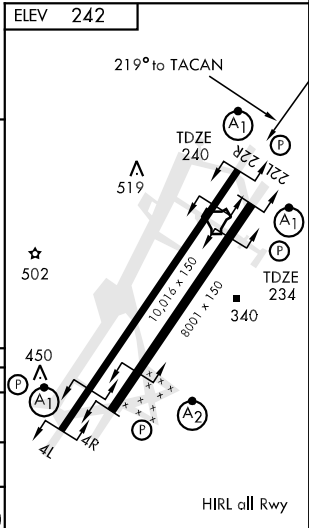
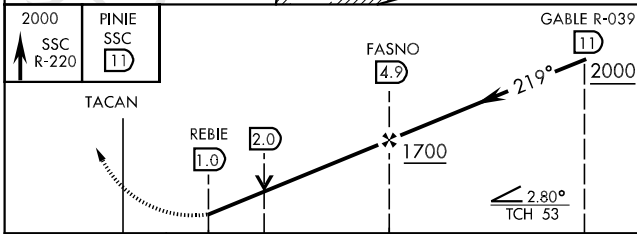
<p>▼ * When ALS inop, increase CAT AB RVR to 50 and vis to 1 mile, CAT C vis to 1½ miles, CAT DE vis to 1¾ miles.</p>	<p>ALSF-1 A1</p>	<p>MISSED APPROACH: Climbing to 2000, intercept SSC TACAN R-220 to PINIE and hold.</p>
---	----------------------	--

<p>ATIS 132.125 270.1</p>	<p>SHAW APP CON 125.4 285.4</p>	<p>SHAW TOWER 126.65 254.25</p>	<p>GND CON 126.1 275.8</p>	<p>CLNC DEL 121.8 289.4</p>
--------------------------------------	--	--	---------------------------------------	--

** When ALS inop, increase CAT C vis to 1½ miles, increase CAT DE vis to 1¾ miles.



EMERG SAFE ALT 100 NM 3900



CATEGORY	A	B	C	D	E
S-22R *	760/24	520 (600-½)	760/50 520 (600-1)	760/60	520 (600-1¼)
SIDESTEP ** 22L	760/50	526 (600-1)	760/60	526 (600-1¼)	
CIRCLING	840-1	598 (600-1)	840-1½ 598 (600-1½)	880-2 638 (700-2)	1000-2¾ 758 (800-2¾)

HIRL all Rwy

SE-2, 22 OCT 2009 to 19 NOV 2009

SE-2, 22 OCT 2009 to 19 NOV 2009