

LOC I-SSC <b>110.1</b>	APCH CRS <b>040°</b>	Rwy Idg <b>10,016</b> TDZE <b>239</b> Arpt Elev <b>242</b>
---------------------------	-------------------------	---

AL-409 [USAF]

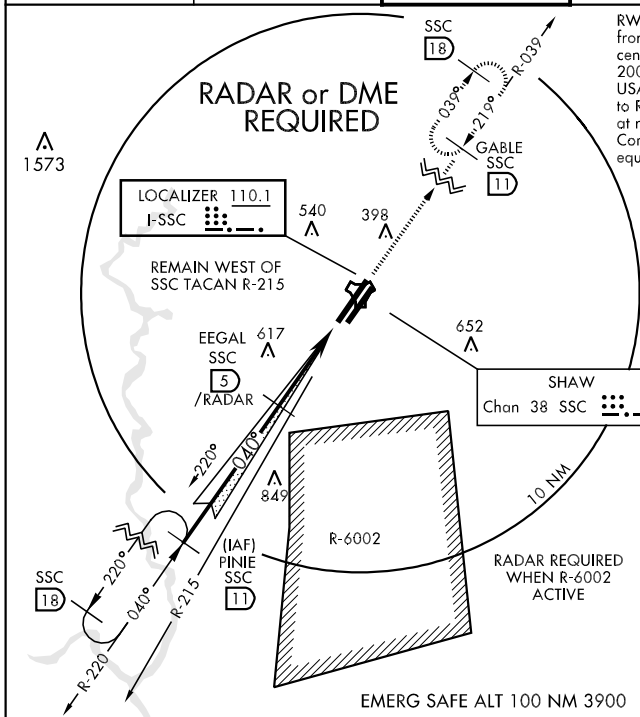
SHAW AFB (KSSC)

▼ \* When ALS inop, increase CAT C vis to 1½ miles, CAT D vis to 1¾ miles, CAT E vis to 2 miles.



MISSED APPROACH: Climbing to 2000, intercept SSC TACAN R-039 to GABLE and hold.

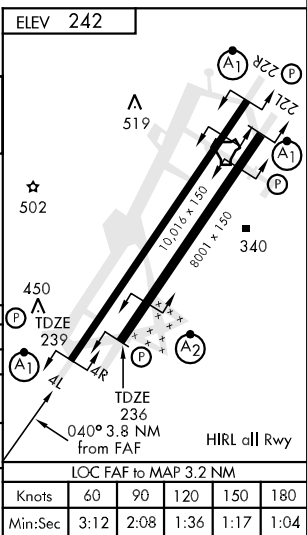
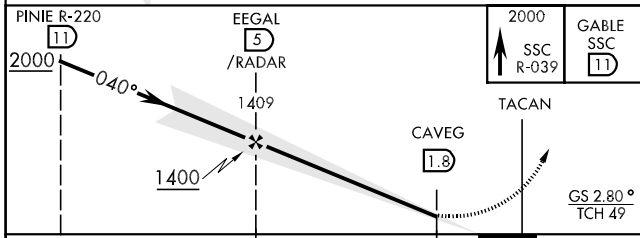
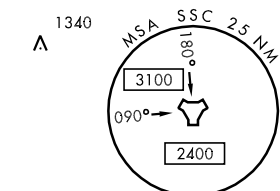
ATIS <b>132.125 270.1</b>	SHAW APP CON <b>125.4 285.4</b>	SHAW TOWER <b>126.65 254.25</b>	GND CON <b>126.1 275.8</b>	CLNC DEL <b>121.8 289.4</b>
------------------------------	------------------------------------	------------------------------------	-------------------------------	--------------------------------



RWY 4L: Terrain 239' to 242' MSL, 200' from threshold, 200' to 400' left of centerline; RWY 22L: Terrain 236' MSL, 200' from threshold, 200' right of centerline. USAF: When VGSI inop, straight in/circling to RWY 4L and sidestep/circling to RWY 22L at night requires approval from Major Command Director of Operations or equivalent.

SE-2, 22 OCT 2009 to 19 NOV 2009

SE-2, 22 OCT 2009 to 19 NOV 2009



	ELEV 242		2000 SSC R-039		GABLE SSC 11	
CATEGORY	A	B	C	D	E	
S-ILS 4L	473/50		234	(300-1)		
S-LOC 4L *	780/50	541	(600-1)	780/60 541 (600-1½)	780-1½ 541 (600-1½)	
SIDESTEP * 4R	800/50	564 (600-1)	800/60 564(600-1¼)	800-1½ 564(600-1½)	800-1¾ 564(600-1¾)	
CIRCLING	840-1	598 (600-1)	840-1½ 598(600-1½)	880-2 638 (700-2)	1000-2¾ 758(800-2¾)	
LOC FAF to MAP 3.2 NM						
	Knots	60	90	120	150	180
	Min:Sec	3:12	2:08	1:36	1:17	1:04