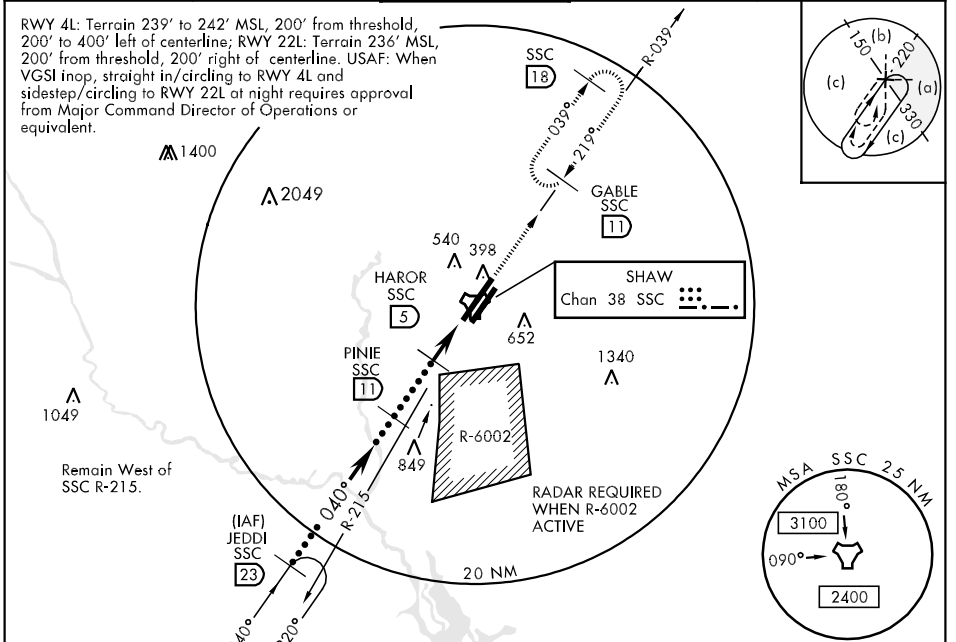


TACAN SSC Chan 38	APCH CRS 040°	Rwy Idg 10,016 TDZE 239 Arpt Elev 242	JAL-409 [USAF]	SHAW AFB (KSSC)
-----------------------------	-------------------------	------------------------------------------------------------------	----------------	-----------------

▼ * When ALS inop, increase CAT C vis to 1½ miles, CAT D vis to 1¾ miles, CAT E vis to 2 miles.

ALSIF-1
MISSED APPROACH: Climbing to 2000, intercept SSC TACAN R-039 to GABLE on hold.

ATIS 132.125 270.1	SHAW APP CON 125.4 285.4	SHAW TOWER 126.65 254.25	GND CON 126.1 275.8	CLNC DEL 121.8 289.4
------------------------------	------------------------------------	------------------------------------	-------------------------------	--------------------------------



	JEDDI R-220 23	PINIE 11	HAROR 5	TACAN DALME 1.8	GABLE SSC 11
	11,000	2000	1400	2000	SSC R-039
	2.80° TCH 49				
			3.2 NM	0.6	

CATEGORY	C	D	E
S-4L *	800/50 561 (600-1)	800-1¼ 561 (600-1¼)	800-1½ 561 (600-1½)
SIDESTEP * 4R	800/60 564 (600-1¼)	800-1½ 564 (600-1½)	800-1¾ 564 (600-1¾)
CIRCLING	840-1½ 598 (600-1½)	880-2 638 (700-2)	1000-2¾ 758 (800-2¾)

SE-2, 22 OCT 2009 to 19 NOV 2009

SE-2, 22 OCT 2009 to 19 NOV 2009