

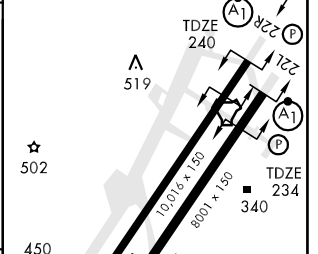
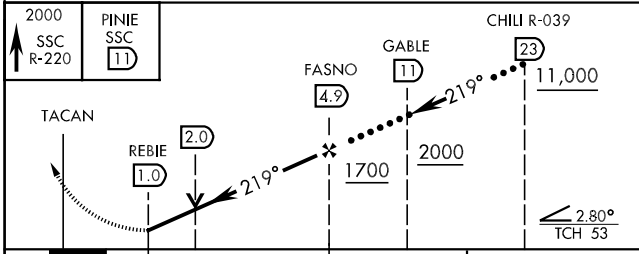
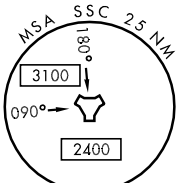
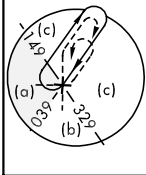
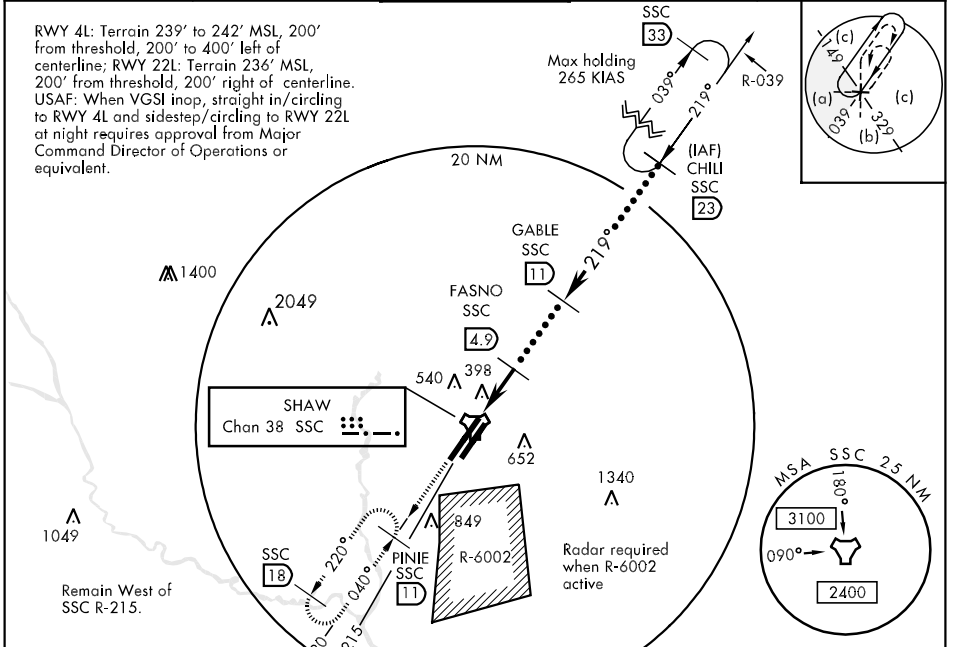
TACAN SSC Chan 38	APCH CRS 219°	Rwy Idg 10,016 TDZE 240 Arpt Elev 242	JAL-409 [USAF]	SHAW AFB (KSSC)
-----------------------------	-------------------------	--	----------------	-----------------

▼ * When ALS inop, increase CAT C vis to 1½ miles, CAT DE vis to 1¾ miles.

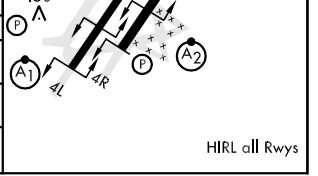
ALSF-1

MISSED APPROACH: Climbing to 2000, intercept SSC TACAN R-220 to PINIE and hold.

ATIS 132.125 270.1	SHAW APP CON 125.4 285.4	SHAW TOWER 126.65 254.25	GND CON 126.1 275.8	CLNC DEL 121.8 289.4
------------------------------	------------------------------------	------------------------------------	-------------------------------	--------------------------------



CATEGORY	C	D	E
S-22R *	760/50 520 (600-1)	760/60	520 (600-1¼)
SIDESTEP * 22L	760/50 526 (600-1)	760/60	526 (600-1¼)
CIRCLING	840-1½ 598 (600-1½)	880-2 638 (700-2)	1000-2¾ 758 (800-2¾)



SE-2, 22 OCT 2009 to 19 NOV 2009

SE-2, 22 OCT 2009 to 19 NOV 2009