

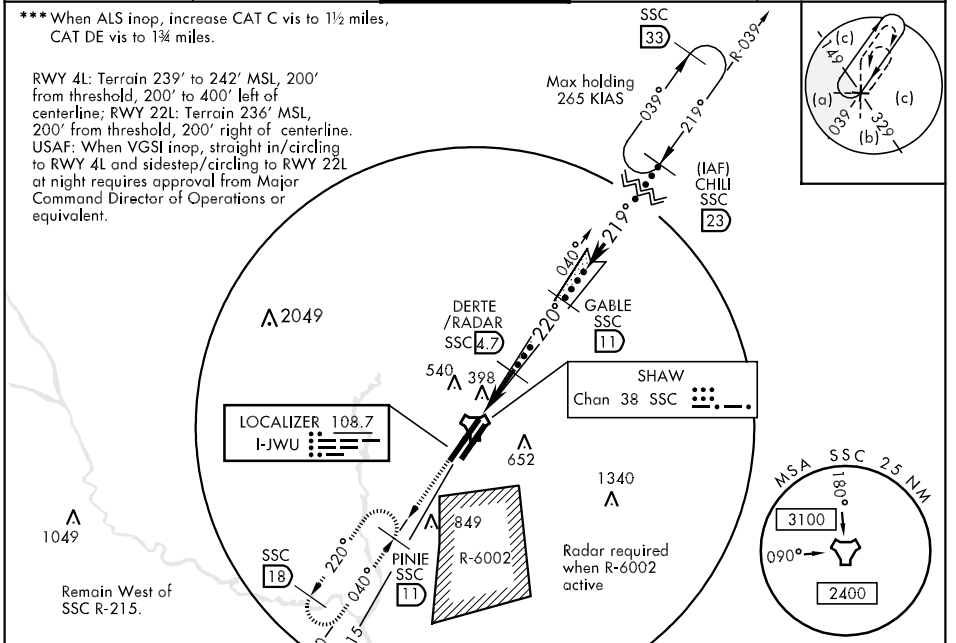
LOC I-JWU <b>108.7</b>	APCH CRS <b>220°</b>	Rwy Idg <b>10,016</b> TDZE <b>240</b> Arpt Elev <b>242</b>	JAL-409 [USAF]	SHAW AFB (KSSC)
---------------------------	-------------------------	--	----------------	-----------------

\* When ALS inop, increase RVR to 40 and vis to 3/4 mile.  
 \*\* When ALS inop, increase CAT CD RVR to 60 and vis to 1 1/4 miles, CAT E vis to 1 1/2 miles.

ALSF-1

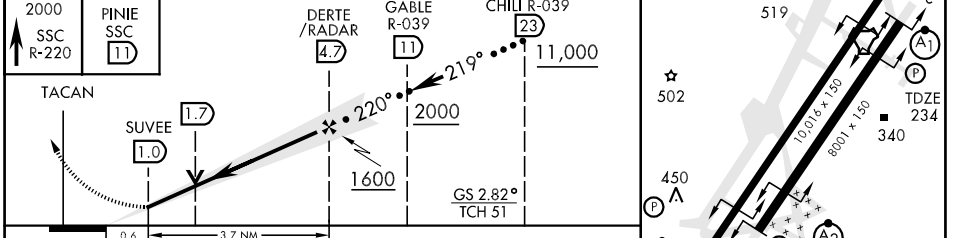
MISSED APPROACH: Climbing to 2000, intercept SSC TACAN R-220 to PINE and hold.

ATIS <b>132.125 270.1</b>	SHAW APP CON <b>125.4 285.4</b>	SHAW TOWER <b>126.65 254.25</b>	GND CON <b>126.1 275.8</b>	CLNC DEL <b>121.8 289.4</b>
------------------------------	------------------------------------	------------------------------------	-------------------------------	--------------------------------



**RADAR or DME REQUIRED**

EMERG SAFE ALT 100 NM 3900



CATEGORY	C	D	E
S-ILS 22R *	440/24	200 (200-1/2)	
S-LOC 22R **	660/40 420	(500-3/4)	660/50 420 (500-1)
SIDESTEP *** 22L	760/50 526 (600-1)	760/60	526 (600-1 1/4)
CIRCLING	840-1 1/2 598 (600-1 1/2)	880-2 638 (700-2)	1000-2 3/4 758 (800-2 3/4)

LOC FAF to MAP 3.7 NM					
Knots	120	140	160	180	200
Min:Sec	1:51	1:35	1:23	1:14	1:07

SE-2, 22 OCT 2009 to 19 NOV 2009

SE-2, 22 OCT 2009 to 19 NOV 2009