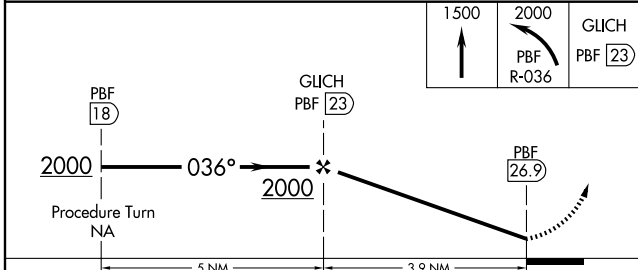
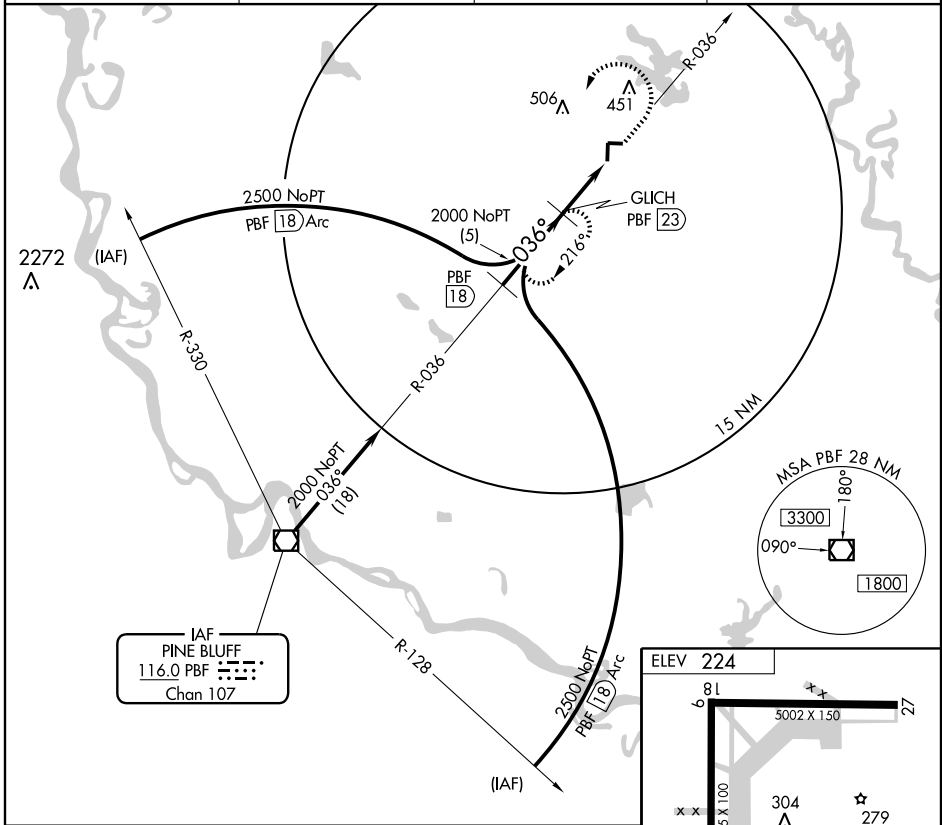


VOR/DME-A
STUTTGART MUNI (SGT)

VOR/DME PBF 116.0 Chan 107	APP CRS 036°	Rwy Idg TDZE N/A N/A Apt Elev 224
--	------------------------	---

<p>▼ When local altimeter setting not received, use Little Rock/Adams Field altimeter setting and increase all MDA 100 feet and circling visibility Cat C ¼ mile.</p>		<p>MISSED APPROACH: Climb to 1500 then climbing left turn to 2000 via PBF R-036 to GUCH 23 DME and hold.</p>	
AWOS-3 119,025	LITTLE ROCK APP CON 135.4 353.6	CLNC DEL 123.7	UNICOM 122.8 (CTAF) 0



CATEGORY	A	B	C	D	Knots	60	90	120	150	180
CIRCLING	760-1 536 (600-1)	760-1¼ 536 (600-1¼)	760-1½ 536 (600-1½)	780-2 556 (600-2)	Min:Sec					

SC-1, 22 OCT 2009 to 19 NOV 2009

SC-1, 22 OCT 2009 to 19 NOV 2009