

RNAV (GPS) RWY 9

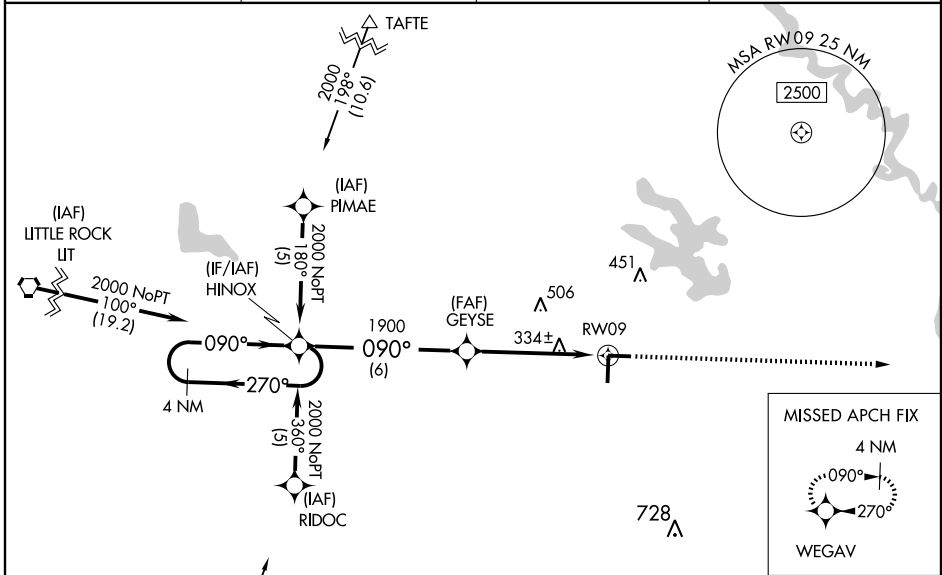
STUTTGART MUNI (SGT)

APP CRS	Rwy Idg	5002
090°	TDZE	219
	Apt Elev	224

▼ If local altimeter setting not received, use Little Rock/Adams Field altimeter setting: increase all MDAs 100 feet. VDP NA with Little Rock/Adams Field altimeter setting. Straight-in minimums NA at night. DME/DME RNP-0.3 NA.

▲ MISSED APPROACH: Climb to 2000 direct WEGAV and hold.

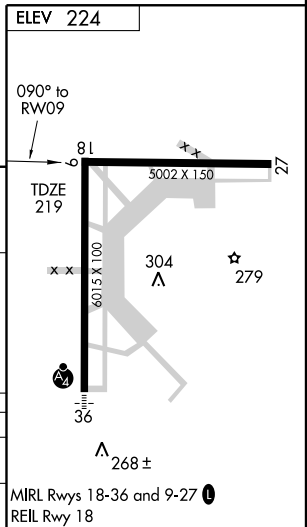
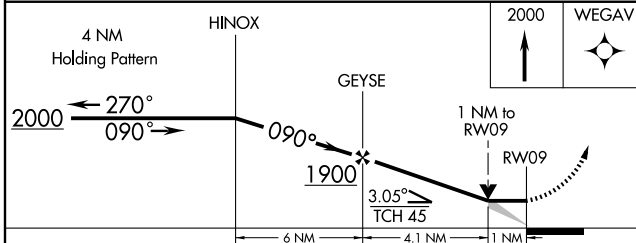
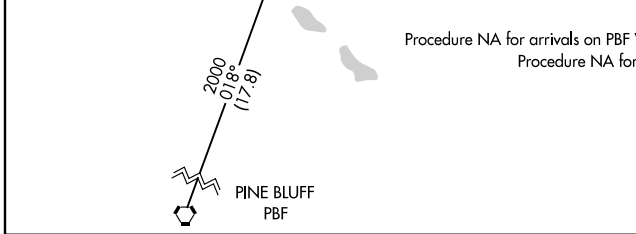
AWOS-3 119.025	LITTLE ROCK APP CON 135.4 353.6	CLNC DEL 123.7	UNICOM 122.8 (CTAF) 0
--------------------------	---	--------------------------	---------------------------------



Procedure NA for arrivals on PBF VORTAC airway radials 034 clockwise 068.
 Procedure NA for arrivals at LIT VORTAC on V54 westbound.

SC-1, 22 OCT 2009 to 19 NOV 2009

SC-1, 22 OCT 2009 to 19 NOV 2009



CATEGORY	A	B	C	D
LNVA MDA		600-1	381 (400-1)	600-1½ 381 (400-1½)
CIRCLING	660-1 436 (500-1)	680-1 456 (500-1)	680-1½ 456 (500-1½)	780-2 556 (600-2)