

STUTTGART, ARKANSAS

AL-408 (FAA)

# RNAV (GPS) RWY 27

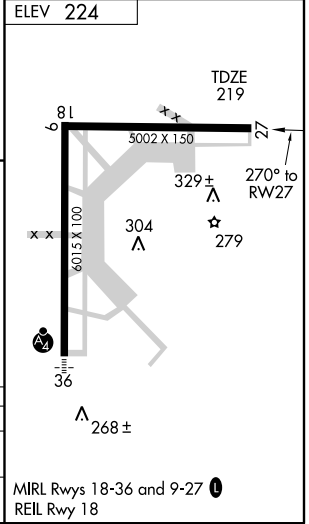
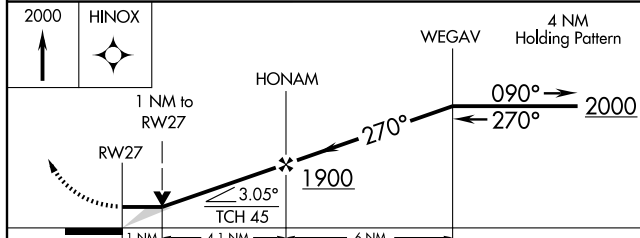
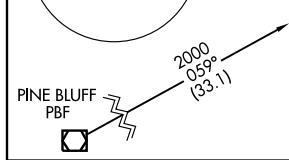
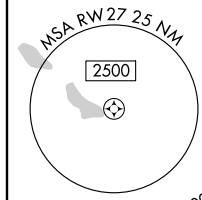
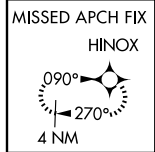
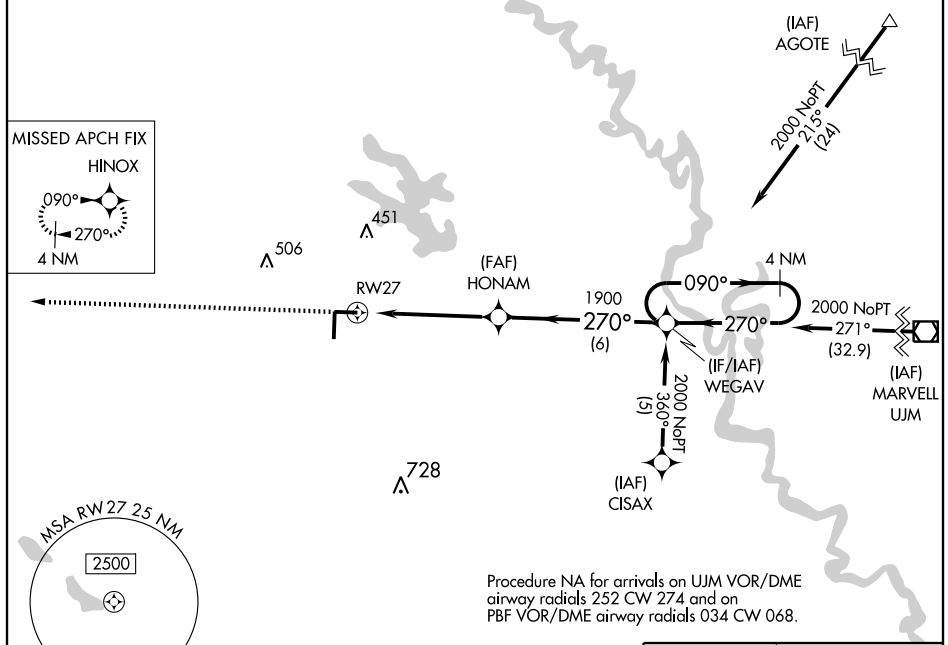
STUTTGART MUNI (SGT)

APP CRS <b>270°</b>	Rwy Idg TDZE Apt Elev	<b>5002</b> <b>219</b> <b>224</b>
------------------------	-----------------------------	---

**▼** If local altimeter setting not received, use Little Rock/Adams Field altimeter setting and increase all MDA's 100 feet. VDP NA when using Little Rock/Adams Field altimeter setting. Straight-in minimums NA at night. DME/DME RNP-0.3 NA.

**MISSED APPROACH:** Climb to 2000 direct HINOX and hold.

AWOS-3 <b>119.025</b>	LITTLE ROCK APP CON <b>135.4 353.6</b>	CLNC DEL <b>123.7</b>	UNICOM <b>122.8</b> (CTAF) <b>📻</b>
--------------------------	---	--------------------------	--



CATEGORY	A	B	C	D
LNVA MDA	580-1 361 (400-1)		580-1¼ 361 (400-1¼)	
CIRCLING	660-1 436 (500-1)	680-1 456 (500-1)	680-1½ 456 (500-1½)	780-2 556 (600-2)

STUTTGART, ARKANSAS  
Amdt 1A 08213

34°36'N-91°34'W

# STUTTGART MUNI (SGT)

## RNAV (GPS) RWY 27

SC-1, 22 OCT 2009 to 19 NOV 2009

SC-1, 22 OCT 2009 to 19 NOV 2009