

RNAV (GPS) RWY 18

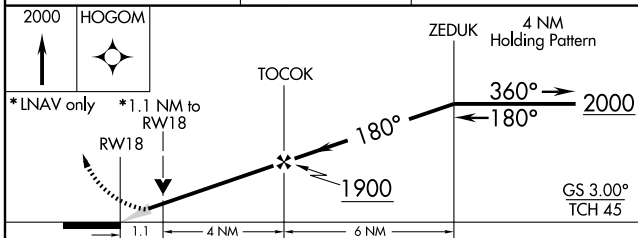
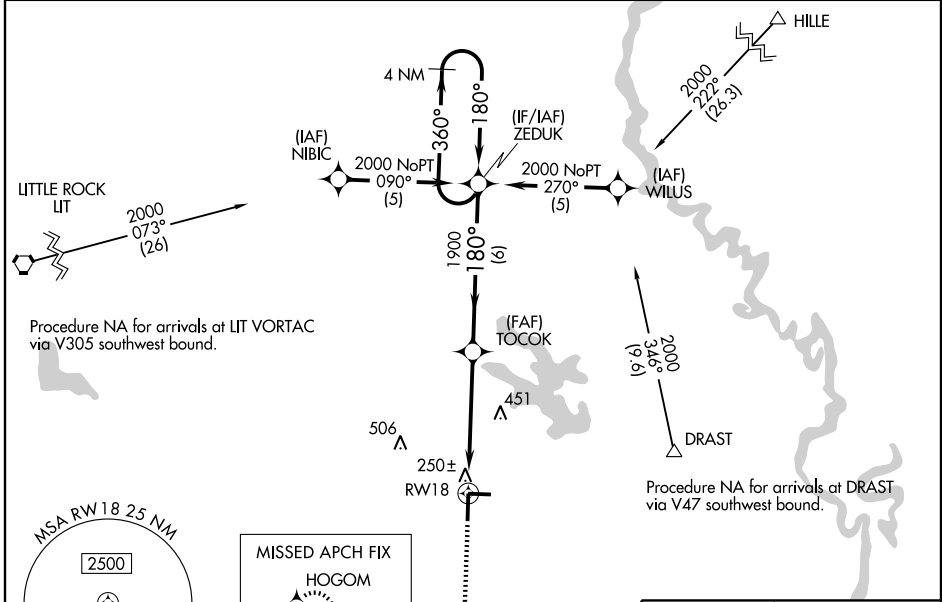
STUTTGART MUNI (SGT)

WAAS CH 58303 W18A	APP CRS 180°	Rwy Idg TDZE Apt Elev	6015 224 224
--	------------------------	-----------------------------	---

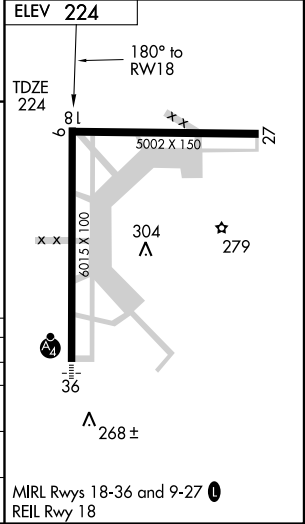
⚠ If local altimeter setting not received, use Little Rock/Adams Field altimeter setting and increase all DAs 82 feet and all MDAs 100 feet. BARO-VNAV NA when using Little Rock/Adams Field altimeter setting. DME/DME RNP-0.3 NA. VDP NA when using Little Rock/Adams Field altimeter setting. For uncompensated BARO-VNAV systems, LNAV/VNAV NA below -15°C (5°F) or above 48°C (118°F).

MISSED APPROACH:
Climb to 2000 direct HOGOM and hold.

AWOS-3 119.025	LITTLE ROCK APP CON 135.4 353.6	CLNC DEL 123.7	UNICOM 122.8 (CTAF) 📻
--------------------------	---	--------------------------	--



CATEGORY	A	B	C	D
LPV DA	474-1 250 (300-1)			
LNAV/VNAV DA	520-¾	296 (300-¾)	520-1 296 (300-1)	
LNAV MDA	620-¾	396 (400-¾)	620-1¼ 396 (400-1¼)	
CIRCLING	660-1 436 (500-1)	680-1 456 (500-1)	680-1½ 456 (500-1½)	780-2 556 (600-2)



SC-1, 22 OCT 2009 to 19 NOV 2009

SC-1, 22 OCT 2009 to 19 NOV 2009