

# NDB RWY 18

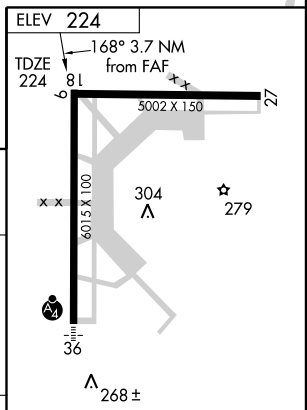
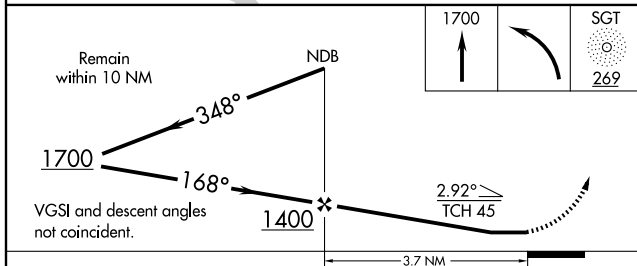
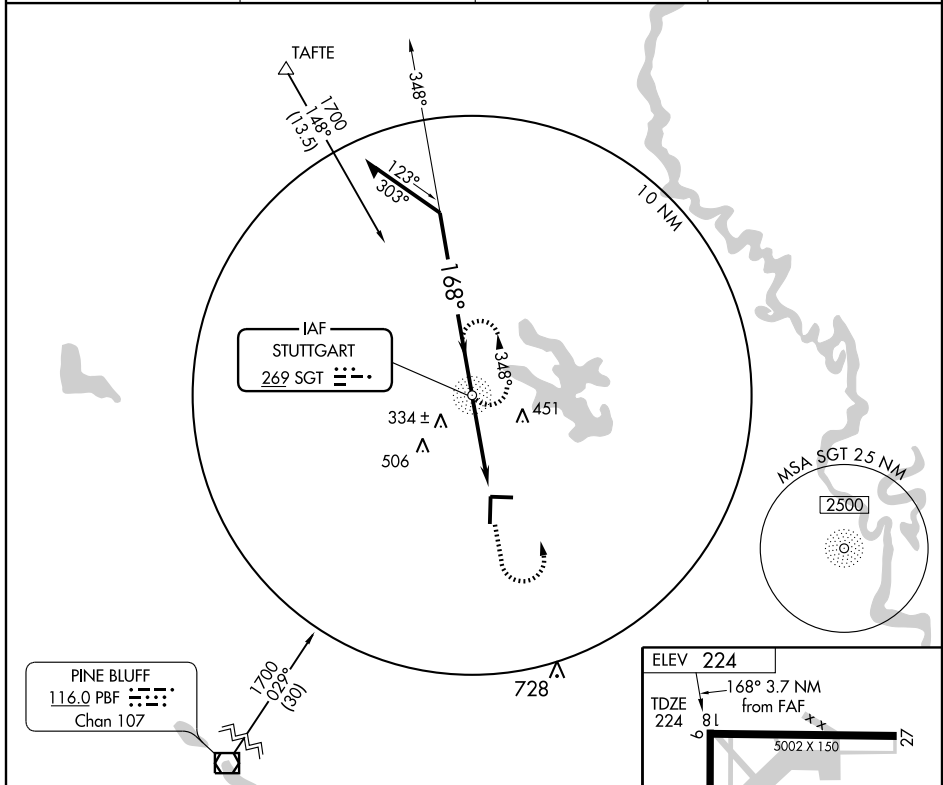
STUTTGART MUNI (SGT)

NDB SGT <b>269</b>	APP CRS <b>168°</b>	Rwy Idg TDZE Apt Elev	<b>6016</b> <b>224</b> <b>224</b>
-----------------------	------------------------	-----------------------------	---

**⚠** When local altimeter setting not received, use Little Rock/Adams Field altimeter setting and increase all MDA 100 feet and S-18 visibility Cat C/D ¼ mile.

**⚠** NA MISSED APPROACH: Climb to 1700 then left turn direct SGT NDB and hold.

AWOS-3 <b>119.025</b>	LITTLE ROCK APP CON <b>135.4 353.6</b>	CLNC DEL <b>123.7</b>	UNICOM <b>122.8</b> (CTAF) <b>📻</b>
--------------------------	---	--------------------------	--



CATEGORY	A	B	C	D
S-18	660-1 436 (500-1)	436 (500-1)	660-1½ 436 (500-1¼)	660-1½ 436 (500-1½)
CIRCLING	660-1 436 (500-1)	680-1 456 (500-1)	680-1½ 456 (500-1½)	780-2 556 (600-2)

MIRL Rwy 18-36 and 9-27 **📻**  
REIL Rwy 18

FAF to MAP 3.7 NM

Knots	60	90	120	150	180
Min:Sec	3:42	2:28	1:51	1:29	1:14

SC-1, 22 OCT 2009 to 19 NOV 2009

SC-1, 22 OCT 2009 to 19 NOV 2009