

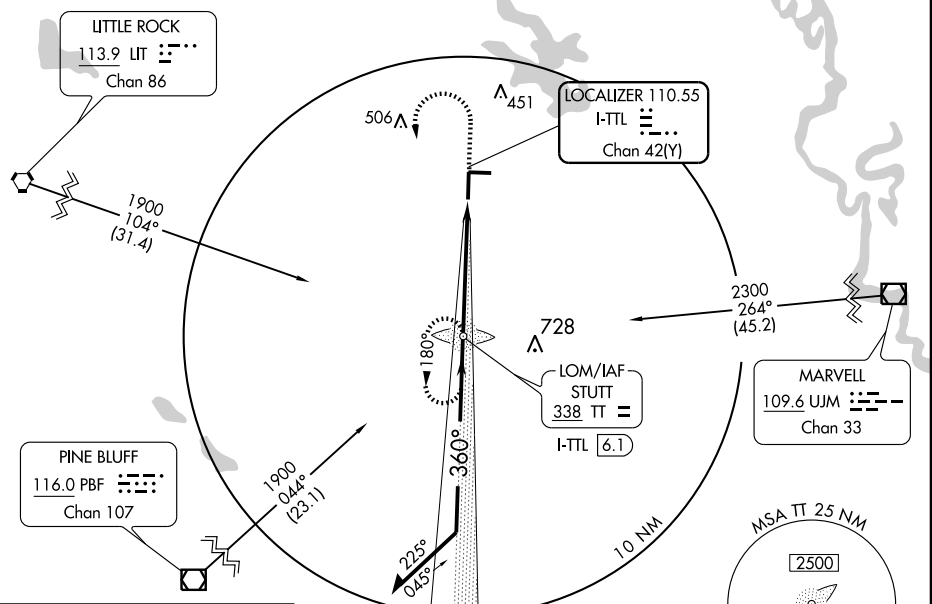
LOC/DME I-TTL <b>110.55</b> Chan <b>42(Y)</b>	APP CRS <b>360°</b>	Rwy Idg <b>6016</b> TDZE <b>224</b> Apt Elev <b>224</b>
---	------------------------	---

**ILS or LOC RWY 36**  
STUTTGART MUNI (SGT)

<p><b>▽</b> If local altimeter setting not received, use Little Rock/Adams Field altimeter setting and increase all DA/MDAs 100 feet. VDP NA with Little Rock/Adams Field altimeter setting.</p> <p><b>▲ NA</b></p>	<p>MALSF</p>	<p>MISSED APPROACH: Climb to 800, then climbing left turn to 1900 direct STUTT LOM and hold.</p>
---	--------------	--

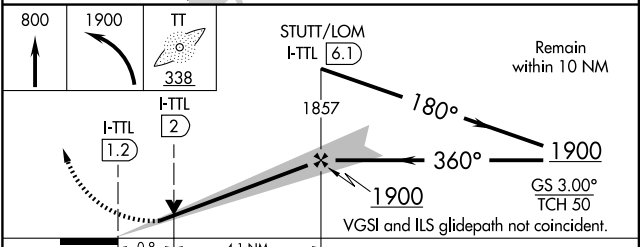
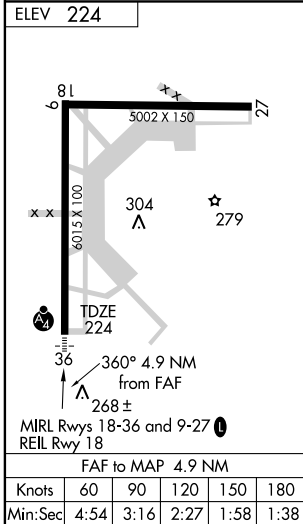
<p>AWOS-3 <b>119.025</b></p>	<p>LITTLE ROCK APP CON <b>135.4 353.6</b></p>	<p>CINC DEL <b>123.7</b></p>	<p>UNICOM <b>122.8 (CTAF) 0</b></p>
----------------------------------	---	----------------------------------	---

**ADF REQUIRED**



SC-1, 22 OCT 2009 to 19 NOV 2009

SC-1, 22 OCT 2009 to 19 NOV 2009



CATEGORY	A	B	C	D
S-ILS 36	424- <sup>3</sup> / <sub>4</sub>		200 (200- <sup>3</sup> / <sub>4</sub> )	
S-LOC 36	520- <sup>3</sup> / <sub>4</sub>		296 (300- <sup>3</sup> / <sub>4</sub> )	
CIRCLING	660-1 436 (500-1)	680-1 456 (500-1)	680-1½ 456 (500-1½)	520-1 296 (300-1) 780-2 556 (600-2)