

STOCKTON, CALIFORNIA

AL-407 (FAA)

VOR RWY 29R

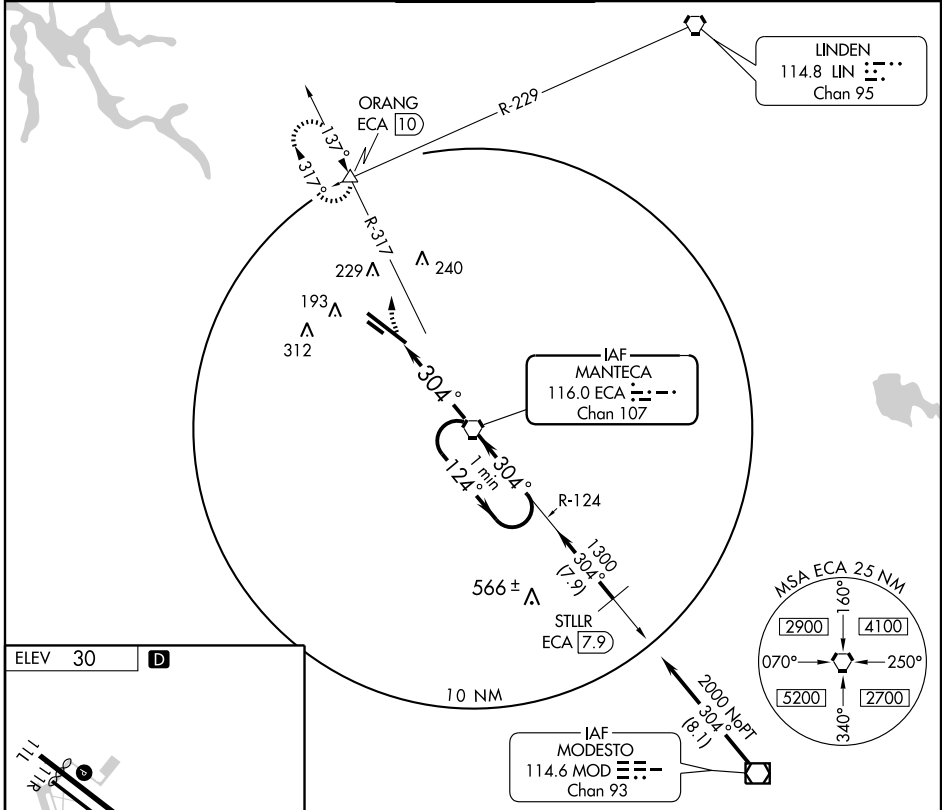
STOCKTON METROPOLITAN (SCK)

VORTAC ECA 116.0 Chan 107	APP CRS 304°	Rwy Idg TDZE Apt Elev	8701 30 30
---	------------------------	-----------------------------	---------------------------------------

▼ Inoperative table does not apply.

MALSR
 MISSED APPROACH: Climbing right turn to 2000 via heading 010° and ECA R-317 to ORANG Int and hold.

ATIS 118.25	NORCAL APP CON (SE-NW) 123.85 278.3 (N-SE) 125.1 363.2	STOCKTON TOWER * 120.3 (CTAF) 239.0	GND CON 121.9	UNICOM 122.95
-----------------------	--	--	-------------------------	-------------------------



ELEV 30 **D**

HIRL Rwy 11L-29R **I**

FAF to MAP 4 NM

Knots	60	90	120	150	180
Min:Sec	4:00	2:40	2:00	1:36	1:20

2000	ECA R-317 116.0	ORANG Δ	VORTAC	One Minute Holding Pattern
------	-----------------	----------------	--------	----------------------------

CATEGORY	A	B	C	D
S-29R	460/50	430 (500-1)	460/60 430 (500-1½)	460-1½ 430 (500-1½)
CIRCLING	500-1 470 (500-1)	540-1 510 (600-1)	540-1½ 510 (600-1¼)	700-2 670 (700-2)

STOCKTON, CALIFORNIA
Amdt 18B 09015

37°54'N-121°14'W

STOCKTON METROPOLITAN (SCK) VOR RWY 29R

SW-2, 22 OCT 2009 to 19 NOV 2009

SW-2, 22 OCT 2009 to 19 NOV 2009