

RNAV (GPS) RWY 29R

STOCKTON METROPOLITAN (SCK)

WAAS CH 87010 W29A	APP CRS 294°	Rwy Idg TDZE Apt Elev	8701 32 33
--	------------------------	-----------------------------	---------------------------------------

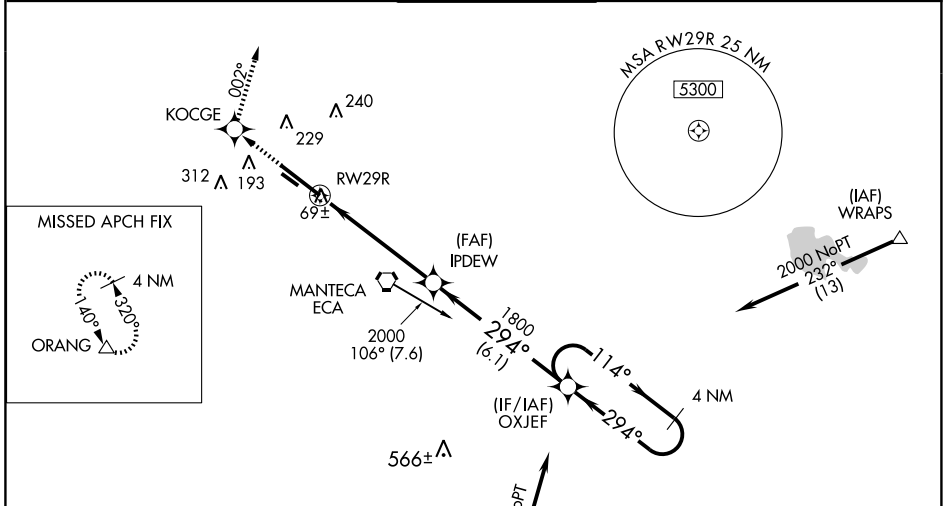
▼ For inoperative MALS/R, increase LNAV/VNAV Cat D visibility to RVR 5000. Baro-VNAV NA when using Modesto altimeter setting.

▲ For uncompensated Baro-VNAV systems, LNAV/VNAV NA below -15°C (5°F) or above 49°C (120°F). DME/DME RNP-0.3 NA. When local altimeter setting not received, use Modesto altimeter setting: increase all DA 58 feet and LNAV/VNAV Cats A/B/C visibility ¼ mile; increase all MDA 60 feet and circling Cat D visibility ¼ mile. For inoperative MALS/R, when using Modesto altimeter setting, increase LPV all Cats visibility to 1 mile. VDP NA with Modesto altimeter setting.

MALS/R

MISSED APPROACH: Climb to 2000 direct KOCGE and right turn via 002° track to ORANG and hold, continue climb-in-hold to 2000.

ATIS 118.25	NORCAL APP CON (SE-NW) 123.85 278.3 (N-SE) 125.1 363.2	STOCKTON TOWER ★ 120.3 (CTAF) 0 239.0	GND CON 121.9	UNICOM 122.95
-----------------------	--	---	-------------------------	-------------------------

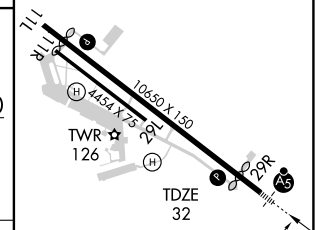
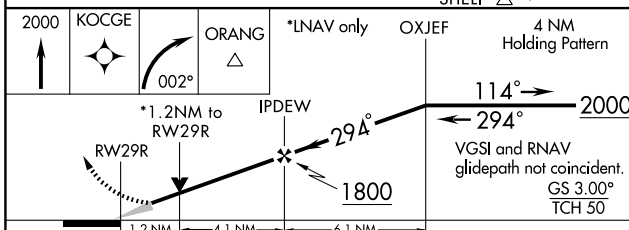


SW-2, 22 OCT 2009 to 19 NOV 2009

SW-2, 22 OCT 2009 to 19 NOV 2009



ELEV 33	D
---------	----------



CATEGORY	A	B	C	D
LPV DA	282/24		250 (300-½)	
LNAV/VNAV DA	327/24		295 (300-½)	
LNAV MDA	460/24	428 (500-½)	460/40 428 (500-¾)	460/50 428 (500-1)
CIRCLING	500-1 467 (500-1)	540-1 507 (600-1)	540-1½ 507 (600-1½)	680-2 647 (700-2)

